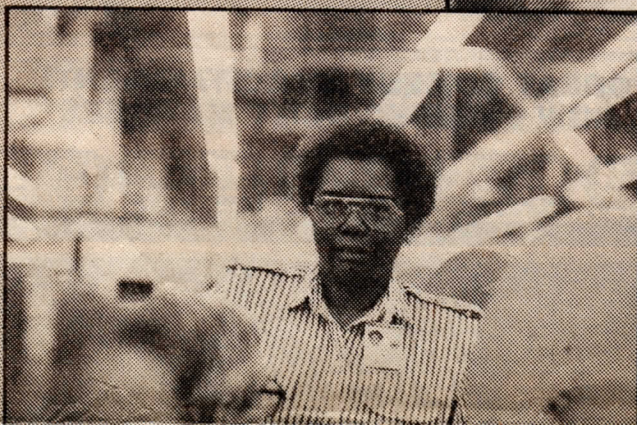
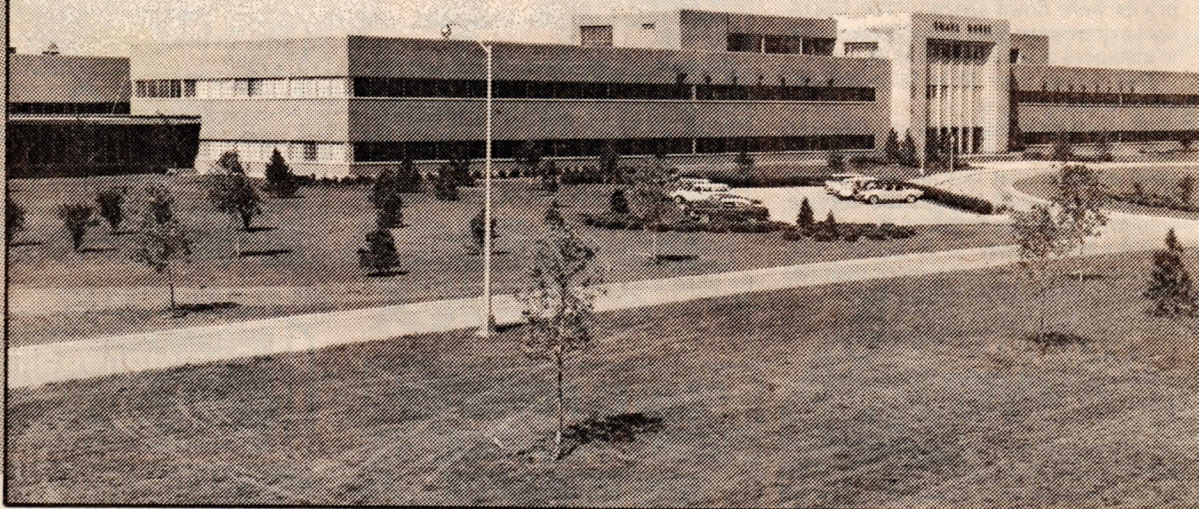


Thirt



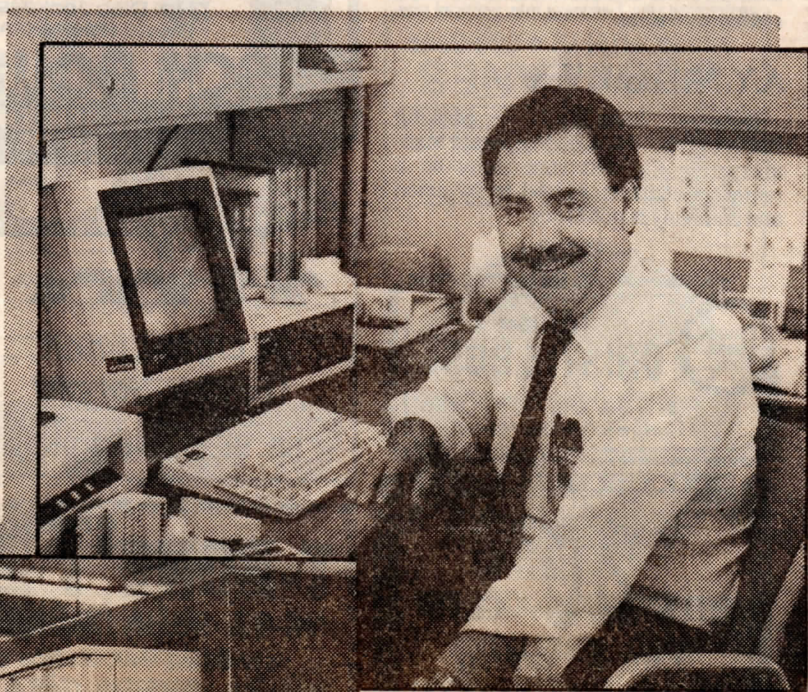
y years ago

AT&T's Western Electric opened its brand new Omaha Works manufacturing plant on the western outskirts of the city. Omaha's city limits barely reached beyond 72nd Street, and West L Street was just a dirt road.

Through the years we at the Works have shared in the successes and the setbacks of a growing metropolitan community. We are proud to call this our home.

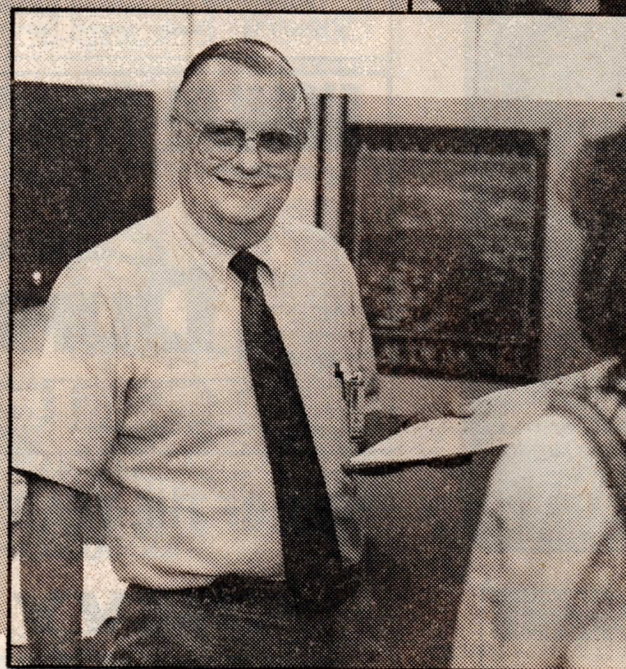
And we are proud to be AT&T.

Sam Baker



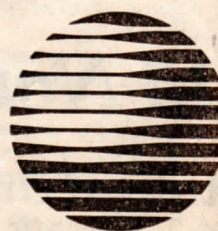


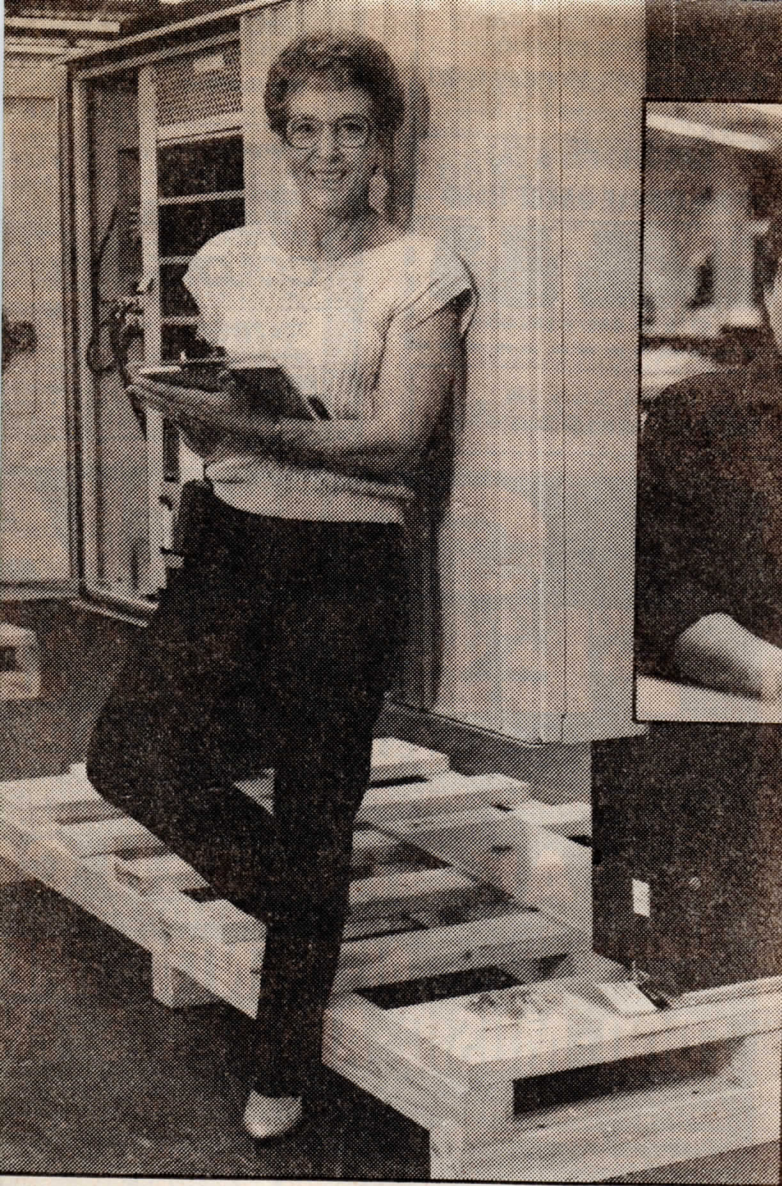
Charity Smith



Jim Allen

Celebrating 30 years





Deanna Traugh

Jeri Hauck

at the Omaha Works

AT&T