

THE HEADLINER



Network Cable Systems, Omaha Works

August 1994

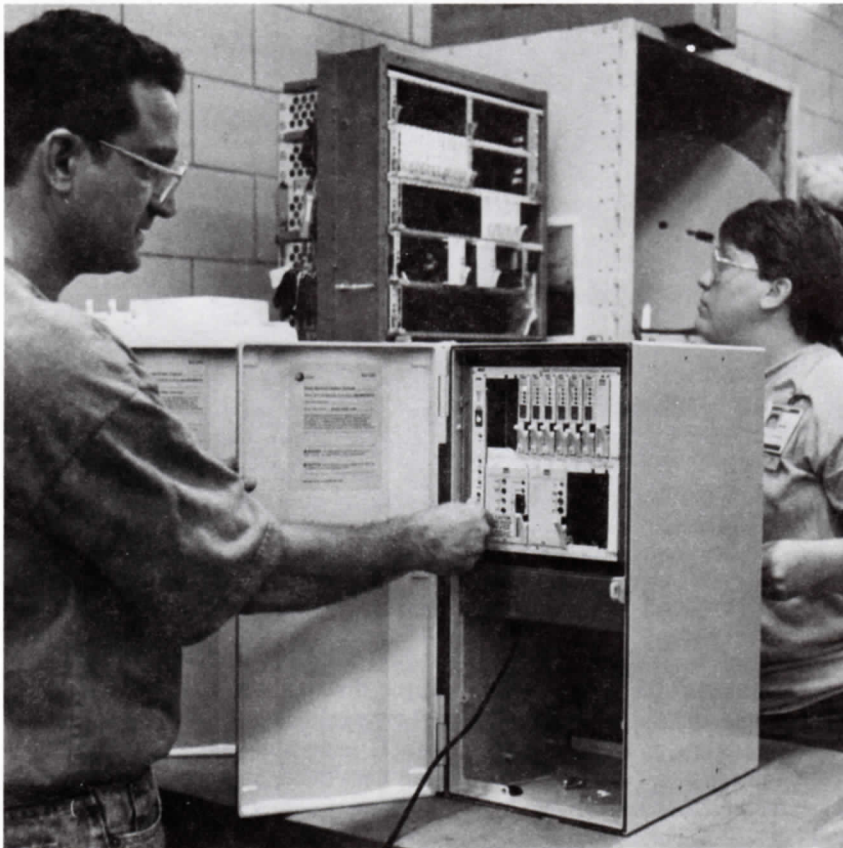


Photo by Linda Ryan

MUST BE PERFECT...Roger Vincent and Helen Alexander make sure this MSDT's circuits are in proper working order during final inspection and testing before the cabinet is packed for shipping.

Omaha Works responds to BellSouth's 'Call to Action'

From BellSouth and AT&T's BellSouth account team the Omaha Works has received a big note of thanks for our "quick response to BellSouth's 'Call to Action' for flood relief" in the aftermath of Tropical Storm Alberto last month.

As much as 14 inches of rain deluged parts of Georgia early in July with Macon, Albany and

Bainbridge particularly hard hit. As cleanup began in devastated areas, the Omaha Works expedited telecommunications gear requested by BellSouth.

In addition to G-cross wire and coax cable provided out of material distribution center (MDC) stock, the Works shipped twenty 51A cabinets, about seventeen 80-type cabinets and

(Continued on Page 3)

Information superhighway

MSDTs: See how we're growing

Just over 13 months ago Craig Williams was literally a one-person production crew in IBU 23HA responsible for assembling, testing, packing and shipping multi-service distant terminals--or, MSDTs.

Today, Williams is helping train employees on second shift in the same department that has grown from one to nearly two dozen total production employees, with prospects of further growth.

The IBU's rapid growth ties directly to the impact of broadband technology. The "information superhighway" is becoming a reality and the Works' MSDTs are growing in demand.

MSDTs are interface cabinets that pull together fiber-optic, coaxial and copper cable in residential areas, making it possible to provide multimedia services ("interactive video services") in which televisions, telephones and computers interact.

In July 1993 the Works began expanding IBU 23HA to meet a major and unique order from US West, which established a test site in West Omaha for its application of broadband technology. It is the first such major test site in the country.

Originally, US West ordered 1,600 of our SLC® 2000 MSDTs. The order was increased to 8,000 when US West decided to serve a broadened customer base of 60,000 residential homes.

And, the Bell company wants the MSDTs as fast as we can make them.

(Continued on Page 2)

MSDT growth linked to info superhighway

(Continued from Page 1)

"US West wants to have them all installed by the end of December of this year," said Art Meier of AT&T Network Systems Sales.

Even with almost two dozen employees now making MSDTs on two shifts, that's a tall order to fill, said IBU supervisor Cathy Placzek.

To ensure timely delivery, the MSDT team has been putting in extra hours. And this spring, Placzek took over Chuck Mann's supervisory responsibilities in the IBU so he could devote full time as engineer overseeing the MSDT line.

Working smarter

That's not all the IBU is doing to meet the delivery timetable. Production and engineering staffs have been working together to lay out an enlarged manufacturing floor plan, focusing on improved work flow, said production worker Helen Alexander.

"We've also been working on ways



Photo by Linda Ryan
TRAINING SESSION...On second shift, Craig Williams instructs Diane Andresen on how to install a card cage in an MSDT.

to simplify and streamline the assembly process," she said.

For example, instead of painting the MSDT's inside metal piece parts, they are "chromated," a process that is much faster than painting but equally durable. The need for silkscreening certain markings at this stage was determined to be unnecessary and ultimately eliminated, thereby saving more assembly time.

More time-consuming handwork will be eliminated when the IBU gets its own AMP machine and automatic crimper that have been ordered.

Team member Roger Vincent cited another aid to on-time delivery: "We're all cross-trained in this department. Everybody's able to pitch in. We just look to see what needs to be done to keep the flow going."

With MSDT pro Craig Williams helping to train newcomers assigned to the IBU's recently established second shift, the work flow is maintained.

"It's neat how that works," noted Joyce Howard, who used to assemble 80-type cabinets before joining the MSDT team last November. "Craig will train them, and then they help each other with what they've learned."

Teamwork does it

The MSDT team "has done an outstanding job in meeting US West needs to this point," noted Network Sales rep Meier. He cited in particular how the team has provided special-order MSDTs-- beyond the 8,000 units needed--for business, apartment dwelling and video equipment applications.

Meier said that given projected broadband technology needs in 1995 and beyond, he expects to see MSDT production at the Works at least double next year. "This is the kind of teamwork that must continue if we are to accomplish anticipated goals of the future." ■

THE HEADLINER

The Headliner is an internal publication of the Omaha Works, produced monthly by the public relations department. It is printed by the Works print shop.

Your comments and suggestions are welcome and should be directed to:

Linda Ryan, Editor
 Ext. 3795.

The next issue will be published on Sept. 21, 1994. All news items should be in to the PR office by no later than 9 a.m. Friday, Sept. 2, 1994.

(Continued from Page 3)
 five 90-type cabinets to BellSouth within two weeks of when the orders were placed.

The Works also sent thirty-six 40-type cabinets, including some from California and West Virginia MDCs, to a Montgomery, Ala., MDC for ready access by BellSouth as needed.

By early August, the Works had shipped about 200 N-type cable terminals with more orders coming in. The N-types were expedited within a four-day interval from receipt of order. Standard interval is four weeks.

Some 25,000 11-type protectors were shipped the same day the order came in, said scheduling specialist Rita Gourlay.

In fact, Gourlay added, BellSouth--unable to procure 11-types from one of its contracted suppliers in the expedited timeframe required--was so impressed by the Works' response

that it "placed a blanket order with us through the end of September to continue supplying 11-type protectors."

Hispa Walkathon to raise funds for scholarships

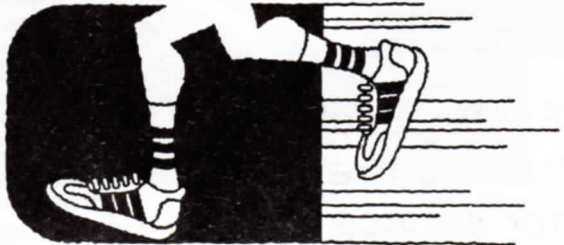
The organizer of the 10K Hispa Walkathon, set for Sept. 10, says to consider the Saturday event a warmup for the annual Omaha Corporate Cup Run the following week.

Elsa Serrano, a material planning engineer, is coordinating the walkathon, proceeds from which will benefit the National Hispanic Scholarship Fund. Though billed a "walkathon," serious runners may want to use the course (from the

Henry Doorly Zoo to Mandan Park and back) to hone their timing for the Corporate Cup.

Walkers or runners participate in the Hispa Walkathon by collecting at least \$10 in pledges. Pledge forms and details are available at plant entrances, cafeterias or from Serrano (Ext. 3658).

Donations of any amount also are welcome, she said. Checks are payable to Hispa Walkathon and should be sent to Serrano, Dept. 227.



Registration starts at 7:45 a.m. the day of the event, with the walk/run starting at 8:30 a.m. Participants may park in Rosenblatt Stadium lots. Walkathon T-shirts will be given to the first 200 participants, and numerous prizes will be awarded.

The national Hispa organization and its local chapters have supported the National Hispanic Scholarship Fund for several years, Serrano said. Last year \$3.5 million in scholarships were awarded to Hispanic American undergraduate and graduate students throughout the United States and Puerto Rico, 11 of those students from Nebraska.

Serrano said information about how to apply for scholarships from the fund is available by sending a self-addressed stamped envelope to: Selection Committee, National Hispanic Scholarship Fund, P.O. Box 728, Novato, CA. 94948.

Two employees retire in August

While students head back to school in August, two Works employees have chosen August to head off into retirement.

(Continued on next page)

Tell it like it is!



The 1994 AT&T Employee Opinion Survey has been sent to some 220,000 employees in more than 58 countries. Candid opinions are sought on company leadership, values, performance management and other workplace issues. All responses are confidential. If you received a survey and haven't sent it in yet, **DO IT TODAY!**

Surveys are due back by Sept. 12!

(Continued from previous page)

Richard Albert retires after 26 years of service and Ralph Brewer (pictured), retires with 35 years of service.



Ralph Brewer
35 years

Easter Seal honors Brewer for service

August retiree Ralph Brewer was one of four people honored at the Camp Easter Seal "Tribute to Volunteers" open house held earlier in the month. A plaque presented to

him described him as "a man who symbolizes the best in tradition and service above self."

Brewer earned recognition for spearheading restoration and major maintenance activities at Camp Easter Seal, as well as organizing Telephone Pioneers' participation in the annual Easter Seal Telethon in March.

For the past 15 years in the springtime, Brewer and a contingent of Pioneer members, partners and life members have headed for the camp located just outside of Milford, Ne., to make sure it is in good physical repair for each summer's camping season.

Operated by the Easter Seal Society of Nebraska, the camp is open for 10 weeks of summer activities to children and adults with physical and developmental disabilities. Its lodge, infirmary and 10 cabins sit on 70 acres by the Big Blue River.

The Pioneers have repaired everything from roofs to windows to

In memoriam

Clara Hendricks, who served as secretary for the AT&T Pioneers Cornhusker Chapter and the WEOMA Club, died on Aug. 16, 1994.

A fund has been established in her memory: The Clara Hendricks Special Education Fund. Those who wish to donate should direct their memorials to the AT&T Pioneers, Cornhusker Chapter No. 92. ■

bridges including, this past spring, replacing the wheelchair ramp at the main lodge. In all, their labor and material contributions have exceeded \$150,000 over the years.

Brewer also was in charge of the Pioneers' involvement in the Easter Seal Telethon, which included taking care of telephone hookups and maintenance needs.



Just for the health of it...

If you take healthy living to heart, be sure to check this out:

✓"A Fare of the Heart," a heart-wise menu selection that's low in fat, calories, cholesterol and sodium. ARA has joined with Methodist Hospital to provide some 30 entrees, all verified by a registered dietician as meeting rigid heart health and culinary quality standards. **Pick up more information in the main cafeteria and eat healthy!**

✓Employee wellness survey. The Works medical department wants to know what kinds of health programs would interest employees. Your response will help determine the future of such programs at the Works. Extra surveys are available in the cafeteria and at office and shop entrances. **Fill one out and return it to the medical department or Nancy Griswold, Dept. 271, by Aug. 31!**

60 respond to international skills survey

Sixty Works employees responded to the training organization's survey it recently conducted to determine international skills and experience in our workforce.

The purpose of the survey was to identify a pool of employees who may be able to support the Works on a local basis as we develop international markets and deal with customers from around the world.

Those who responded were asked to indicate whether they spoke a foreign language or had experience living, working or studying abroad. The 60 responses showed a broad range of language skills, including Japanese, Chinese, Arabic, Russian, Polish, French and Spanish.

Experiences that were noted on the surveys also were varied, including military service and education abroad, and being native to a country other than the U.S.

Training specialist Bob Hosier is compiling a database with information from the survey. The data could prove to be especially useful to the Product Display Center, which hosts a growing number of international customers.

"We're finding we need the help of people who can speak the language of our customers and give us some insight regarding their various cultures," said Frank Markesi of the display center.

Even knowing the diet habits or body language within a culture can

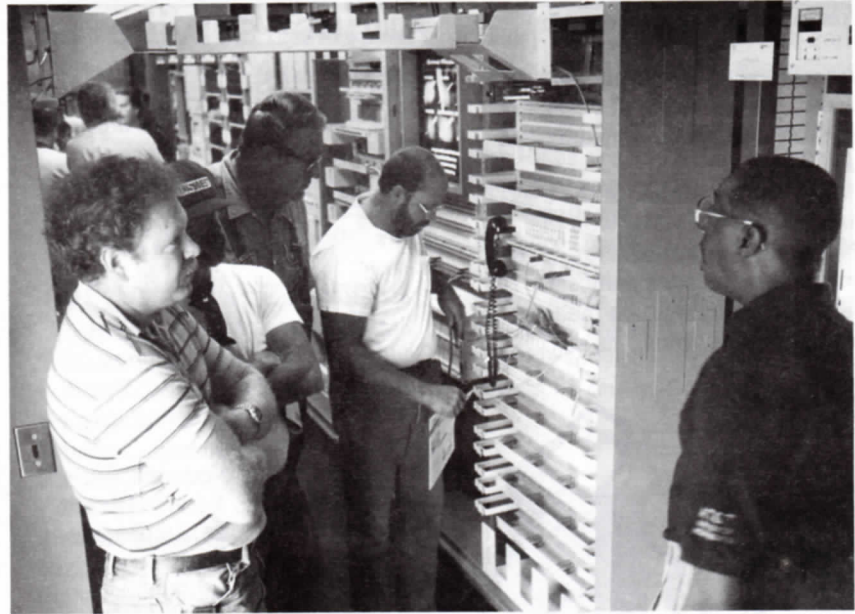


Photo by Steve Miller

Central office on wheels: *On the outside, it looks like a 48-foot semitrailer. But the inside has been transformed into an AT&T Wire Center Modernization/ExchangeMAX(TM) central office structured cabling system exhibit. It includes the full line of Network Cable Systems central office products set up as they would be in a central office, complete with overhead racking, cabling and lighting. The mobile exhibit has been traveling all around the country for about a year, affording customers the opportunity to see firsthand demonstrations of product installations, systems and applications. When the rig made a stop in Omaha late last month, it was parked in the Omaha Works' east office parking lot where customers like these pictured from US West were met by AT&T's Charlie Scott (right), regional field support for central office products.*

be important in winning customers, Markesi said, especially given the Network Systems' Customer Architecture whereby we must "think and act like our customer."

Three employees are medalists in state games

Competing in the Cornhusker State Games, a Nebraska Olympic-style contest for family participation, has become a tradition for at least three Omaha Works employees.

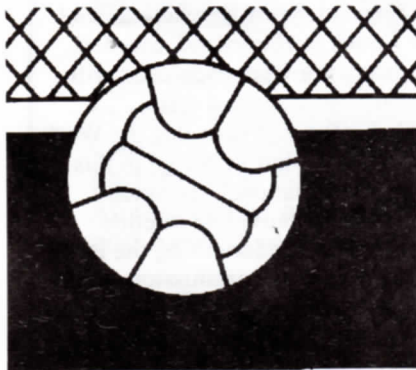
Composite master tradesworkers Carl Soby and Steve Mahr and accounting specialist Carlos Palacios each brought home medals from the games held in late July in Lincoln.

For Soby, the games were a family affair. While he competed in bowling, seven of his children (Mary, Theresa, Danielle, Natasha, Ben, Bridget and Patrick) competed in various swimming events. They won a combined total of 15 gold, seven silver and four bronze medals.

"They knew the Sobys were there," said Soby, who bowled 210 to win a bronze medal in his age bracket. This was the first year he competed in bowling, having participated and placed in swimming events--as did other of his children-- in past years, he said.

Palacios earned a gold medal as a member of the winning mixed soccer team (over 25 age group). He said he has played on mixed soccer teams for

(Continued on next page)



(Continued from previous page)

most of the last 10 Cornhusker State Games. Out of those 10 years, "our team has won six gold medals," he said.

Mahr was a member of the over-25 mixed soccer team that won the silver medal. Like Palacios, he has competed in the state games for 10 years, and brought home medals "seven or eight times," he said.



EW&C keeps scrap levels down

Congratulations are in order for employees in electronic wire and cable (EW&C).

They managed to reduce scrap to the second lowest level since initiating an EW&C Win/Win/Win scrap reduction program earlier this year in March.

The scrap level during July amounted to 4.5 percent of EW&C's production for the month, making it the second best result since the program began. In March scrap was at 4.25 percent of production.

Merle Dinslage, wire IBU product engineering and operations manager, said the scrap level results are particularly commendable in light of EW&C's recent addition of new products, machinery and personnel.

He said he is optimistic that scrap will be reduced further as personnel become fully trained on new jobs and new equipment runs smoothly.

August service anniversaries

The following employees are celebrating milestone service anniversaries during August. The anniversary date is given with service years following the employees' names:

- 8/2--Brenda Schuster, 15.
- 8/3--Chester Sears, 35; Robert Gaddie, 35; Kenneth Krumpus, 35.
- 8/4--Virginia Hyslop, 25; David Martin, 25; Dennis Fleming, 25; Mary Williams, 25.
- 8/5--Sherry Van Nortwick, 20; Wesley Lyons, 35; Edward Olsson, 30; Douglas McGuire, 35; Bonnie Ernst, 10; Lillian Circo, 30.
- 8/6--Manuel Delgadillo, 25; Leonard Zealand, 25; William Tiff, 15; James Karros, 15; Gary Mintken, 35.
- 8/10--James Filipiak, 30; Irvin Black, 30; Edward Snawerdt, 30; Geraldine Young, 15; Norman Rohloff, 35.
- 8/11--David Gorden, 25; David Buddenhagen, 25; Doris McDonald, 35; Larry Tremayne, 35; Vincent Seaman, 25.
- 8/12--Eugene Nicholson, 25; Clifford Barrick, 25; Gary Scott, 25; Gregory Jardee, 20.
- 8/13--Charles Gray, 30; Sandra Petska, 15; Jonathon Bullock, 15; Steven Prerost, 35.
- 8/14--James Barrett, 35; Dennis McCauley, 25; Mark Zimmerman, 25; Edward Powell, 10.
- 8/15--Sandra Barnes, 25; Earl G. Koziol, 15 years.
- 8/17--Forest Payne, 35; John Palu, 35; Robert Cochrane, 35; Larry Fisher, 35; Rebecca Waniska, 15.
- 8/18--Willard Brink III, 35; Logan Fontenelle, 35; Peggy Modlin, 25; Lynn Hapke, 25.
- 8/19--Patricia Patterson, 30; Lorraine Goynes, 30; Cora Dennes, 25.
- 8/20--Kristy Thompson, 15; Susan Harriman, 25; James Wachter, 25; James Edmonson, 25.
- 8/21--Richard Wozny, 35.
- 8/23--Bonnie Anderson, 20.
- 8/24--Lloyd Donahoo, 35; William

Witte, 35; Mary Bennett, 25; Louis Johnson, 30.

8/25--Leslie Guest, 25; Carl Kinney, 25; Joyce Hascall, 25; Frank Tesnohlidek Jr., 25; Phillip McCormick, 25; Dale Plambeck, 25; Helen Solomon, 30; Byron Frank, 35.

8/26--Elberta Tipler, 25; James Stoltenberg, 35; Betty Borstad, 25; Michael Brock, 25.

8/27--Robert Wright, 10; Marvin Seitz, 25; Carolyn Schrader, 25; Sylvia Hearn, 25; Judy Nebe, 25; Stephen Kush, 25.

8/28--Joanna Swirzinski, 25; Jerome Murphy, 35; Nancy Pegg, 25; Eugene Bowman, 30; Michael Casper, 25.

8/31--Stanley Szczepanski, 35; Bernard Kraska, 30; Jerome Kromer, 35; Patricia Hamilton, 25; Larry Henry, 35; Richard Kyriss, 35.

(Editor's note: Apologies to Chester Wagner and Jimmie Howard, whose names were omitted from July's service anniversaries. Wagner marked 45 service years on July 26; Howard, 30 years on July 27.)

Metro class is global experience

Students taking Metropolitan Community College's "Contemporary Social and Political Issues" class will be able to exchange ideas and engage in current-day issues with students enrolled in the same class in Sweden, thanks to the Omaha Works.

Metro College students will attend five class sessions on Works premises where they will be connected by way of satellite broadcast with students attending the State School for Adults in Harnosand, Sweden. An instructor from each class will conduct the class as a team.

This is the first time that the Works has assisted Metro College in this type of international education exchange by providing satellite facilities and underwriting the long distance cost of transmission, said engineer Dick Runnels, who is overseeing the project. Class sessions begin on Sept. 7.

Product quality rates an 'A'

Quality Assurance has awarded the following IBUs the grade of "A" for their product quality achievements for the July rating period:

IBU 228--710 connectors; 700-type

connectors; 105 cable terminals; 8, 9 and 142-type cable terminals.

IBU 226--DSX; 11-type cable stubs; 78, 89 and 112 connecting blocks.

IBU 222--188, 189, 190, 300 building entrance protectors.

IBU 220/230--Miscellaneous apparatus.

EW&C--Inside wire cable; plenum/LAN cable; switchboard/spec cable; coaxial cable.

Time Warner contract signed

AT&T Network Systems has signed a five-year agreement with Time Warner Communications to become the company's primary supplier of telecommunications equipment as they enter the telephone market.

Estimated at several hundred million dollars, it is the largest contract NS has ever signed with a cable television company. The contract is an example of a "total solutions" approach in which NS serves as both end-to-end network equipment supplier and systems integrator.

Time Warner has agreed to purchase AT&T switching, transmission and network technologies and related software.


UNO sports books on sale

University of Nebraska at Omaha (UNO) alumni and friends of the university: UNO Athletic Ticket Books are now on sale for \$25.

Each book contains 15 adult tickets (for a value of \$75) and/or 30 student tickets, K-12 (for a value of \$90).

Tickets provide admission to football, volleyball, men's and women's basketball, wrestling and softball events.

Books may be bought from George Schabloske, Ext. 3235 (Building 20, Column 5P first floor). ■



**YOU
SAY
YOU LIKE
SURPRISES?**

Not when it comes time to collect your Social Security check. Now you can pick up a form in the Works Benefits Office to send for a free statement which will show you your Social Security earnings history to date, how much you have paid in Social Security taxes, and an estimate on how much Social Security you can expect to draw when you retire--whenever that may be in the future. You will also receive general information about the program.

Input errors can and do happen, so it may be worth your while to make sure your personal Social Security data is correct. And, the data you receive can help you plan for your financial future.

AVOID FUTURE SHOCK!

Ask the Benefits Office for a
"Social Security Administration Request for Earnings and Benefit Estimate Statement"
and send it in today!

For your convenience

Notary services are available in the Employee Resource Center (ERC).

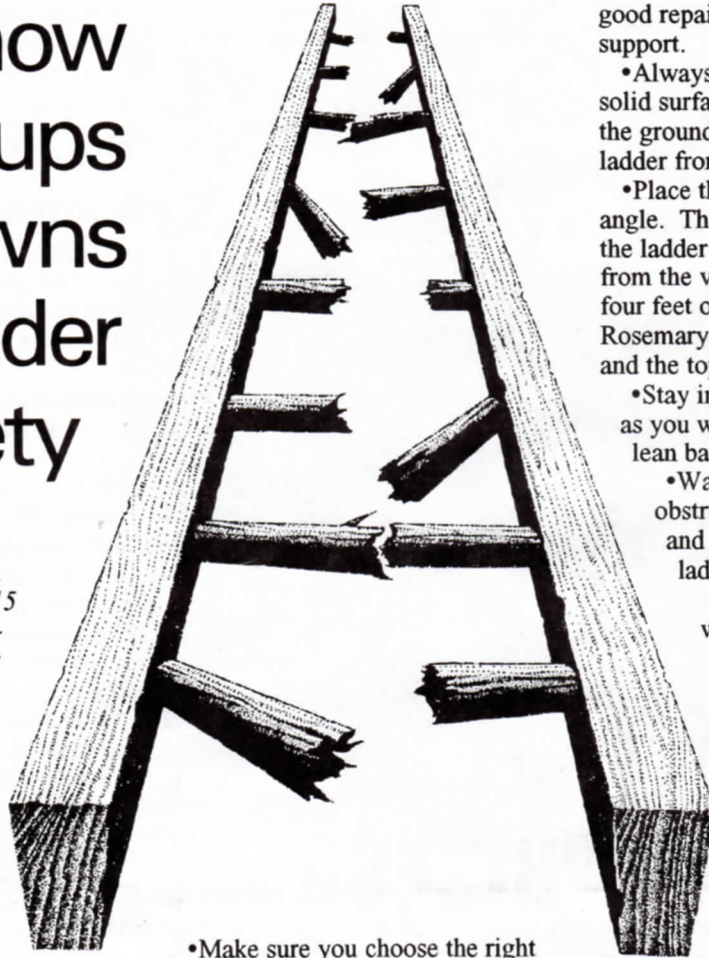
Know the ups & downs of ladder safety

(If your name appears somewhere in this article, call Ext. 3583 or Ext. 3415 to claim a \$40 gift certificate to one of six popular local restaurants. The names of two employees are featured.)

By Rich Schmitz

Marvelous inventions, those ladders. But if you don't get off on the right foot safetywise when a job calls for a ladder, you could be headed for a heap of hurting.

Whether at home or work, before you climb a ladder next time remember these important safety tips:



- Make sure you choose the right ladder for the job. If you will be working near electrical sources, choose a wooden or plastic ladder instead of metal.

- Carefully check the ladder from top to bottom to make sure it is in

good repair and affords secure support.

- Always put the ladder on a firm, solid surface. Use a board to level the ground surface and to keep the ladder from sinking into soft ground.

- Place the ladder at the proper angle. This is done by making sure the ladder is about one foot away from the vertical support for every four feet of ladder height between Rosemary Gonzales the base support and the top support.

- Stay inside the ladder's side rails as you work. Never lean out or lean back at an angle.

- Watch out for overhead obstructions and power lines, and keep the area around the ladder free from clutter.

- Use a guard or barricade when using your ladder in a traffic area.

- When you must use a ladder to reach a roof or platform, make sure it extends at least three feet beyond Barbara Robertson the roof edge or support point. Tie the ladder as close as possible to the upper support point.

- When using a step ladder, always make sure it is fully opened and securely locked.

Your safety and life depend on your heeding these safety tips when using a ladder. Follow them! ■



WEOMA Club Women's Golf Outing

Saturday, Sept. 17, 1994

Lakeview Golf Course

Tee-off time: 10:30 a.m.

Cost: \$15 per person

**9 holes of golf*

**Chicken dinner*

served at 1:30 p.m.

**Coffee & rolls at check-in*

Sign up by Sept. 5!

Carol Sears, x4903 Evie Winters, x3165 Bev Clark, x3136