 **Western Electric**
OMAHA WORKS
STAFF

March 15, 1974

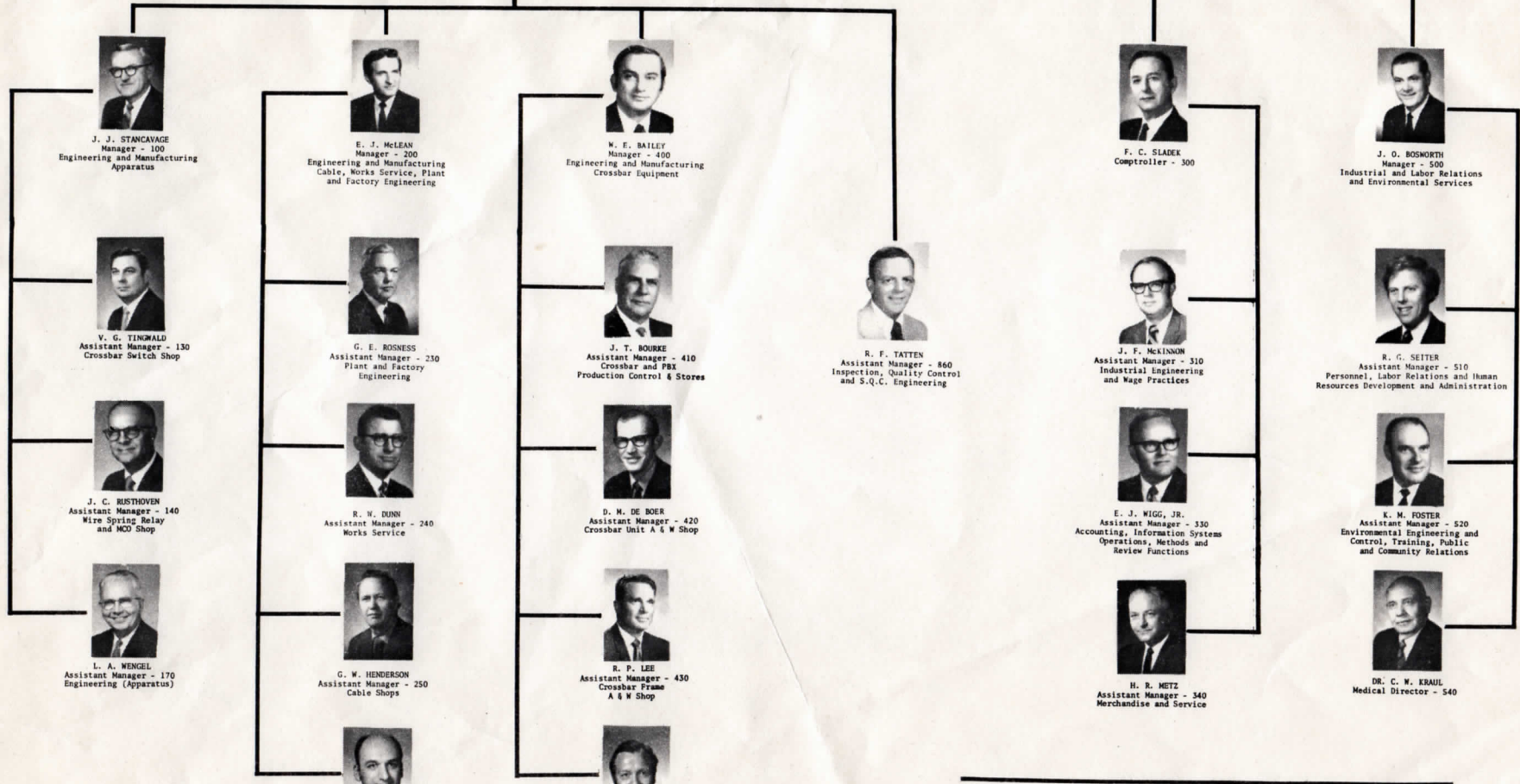
MAR 22 1974



F. J. LEFEBVRE
General Manager - 1



W. L. HUNT
Director of Engineering
and Manufacturing - 10



RESIDENT HEADS



H. E. DAVIDSON
Assistant Manager - 660
Resident Purchasing Manager



H. D. HICKMAN
Assistant Manager - 3450
Information Systems
Development



J. A. GRAF
Assistant Manager - 6350
Quality Assurance



G. W. BODINSON
Assistant Manager - 9960
Merchandise & Service - Stock
Customer Planning Division

MAR 22

F. J. LEFEBVRE
General Manager - 1



W. L. HUNT
Director of Engineering
and Manufacturing - 10



J. J. STANCAVAGE
Manager - 100
Engineering and Manufacturing
Apparatus



E. J. McLEAN
Manager - 200
Engineering and Manufacturing
Cable, Works Service, Plant
and Factory Engineering



W. E. BAILEY
Manager - 400
Engineering and Manufacturing
Crossbar Equipment



V. G. TINSWALD
Assistant Manager - 130
Crossbar Switch Shop



G. E. ROSNESS
Assistant Manager - 230
Plant and Factory
Engineering



J. T. BOURKE
Assistant Manager - 410
Crossbar and PBX
Production Control & Stores



R. F. TATTEN
Assistant Manager - 800
Inspection, Quality Control
and S.Q.C. Engineering



J. C. RUTHOVEN
Assistant Manager - 140
Wire Springs Relay
and MCO Shop



R. W. DUNN
Assistant Manager - 240
Works Service



D. M. DE BOER
Assistant Manager - 420
Crossbar Unit A & W Shop



I. A. WENZEL
Assistant Manager - 170
Engineering (Apparatus)



G. W. HENDERSON
Assistant Manager - 250
Cable Shops



R. P. LEE
Assistant Manager - 430
Crossbar Frame
A & W Shop



R. E. JAFFALDANO
Assistant Manager - 270
Engineering (Cable Shops)



R. E. DENTON
Assistant Manager - 470
Engineering
(Crossbar A & W Shop)



J. J. STANCAVAGE
Manager - 100
Engineering and Manufacturing
Apparatus



V. G. TINGWALD
Assistant Manager - 130
Crossbar Switch Shop



J. C. RUSTHOVEN
Assistant Manager - 140
Wire Spring Relay
and MCO Shop



L. A. WENGEL
Assistant Manager - 170
Engineering (Apparatus)



E. J. McLEAN
Manager - 200
Engineering and Manufacturing
Cable, Works Service, Plant
and Factory Engineering



G. E. ROSNESS
Assistant Manager - 230
Plant and Factory
Engineering



R. W. DUNN
Assistant Manager - 240
Works Service



G. W. HENDERSON
Assistant Manager - 250
Cable Shops



R. G. IAFFALDANO
Assistant Manager - 270
Engineering (Cable Shops)



W. E. BAILEY
Manager - 400
Engineering and Manufacturing
Crossbar Equipment



J. T. BOURKE
Assistant Manager - 410
Crossbar and PBI
Production Control & Stores



D. H. DE BOER
Assistant Manager - 420
Crossbar Unit A & W Shop



R. P. LEE
Assistant Manager - 430
Crossbar Frame
A & W Shop



R. E. DENTON
Assistant Manager - 470
Engineering
(Crossbar A & W Shop)



R. F. TATTEN
Assistant Manager - 860
Inspection, Quality Control
and S.Q.C. Engineering



F. C. SLADEK
Comptroller - 300



J. F. McKINNON
Assistant Manager - 310
Industrial Engineering
and Wage Practices



E. J. WIGG, JR.
Assistant Manager - 330
Accounting, Information Systems
Operations, Methods and
Review Functions



H. R. METZ
Assistant Manager - 340
Merchandise and Service



J. O. BOSWORTH
Manager - 500
Industrial and Labor Relations
and Environmental Services



R. G. SEITER
Assistant Manager - 510
Personnel, Labor Relations and Human
Resources Development and Administration



K. H. FOSTER
Assistant Manager - 520
Environmental Engineering and
Control, Training, Public
and Community Relations



DR. C. W. KRAUL
Medical Director - 540

RESIDENT HEADS



H. E. DAVIDSON
Assistant Manager - 660
Resident Purchasing Manager



H. D. HICKMAN
Assistant Manager - 9450
Information Systems
Development



J. A. GRAF
Assistant Manager - 6350
Quality Assurance



G. W. BODINSON
Assistant Manager - 9960
Merchandise & Service - Stock
Customer Planning Division