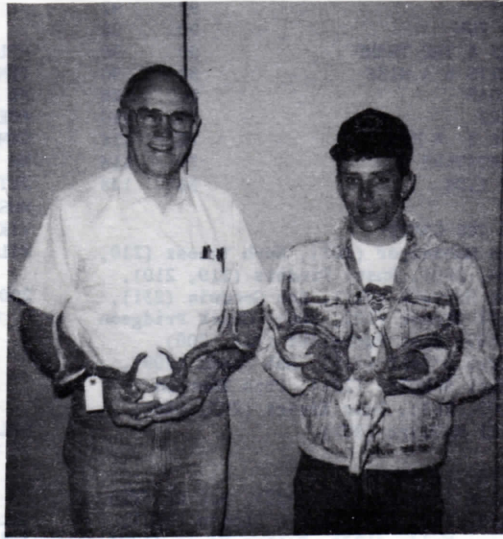
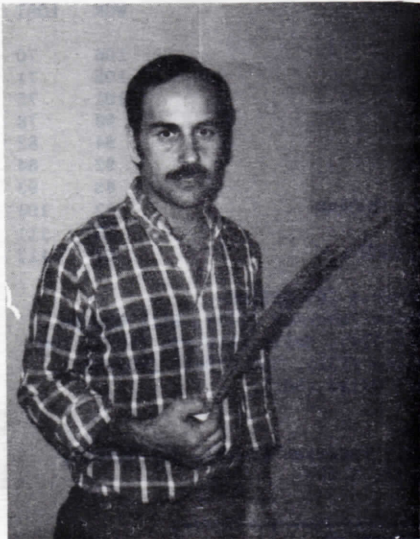


Weoma Club NEWS

March 7, 1990

Distefano, Thomas Winners in Sportsmen's Club Contest



Pheasant tails and deer racks were judged at the Weoma Sportmen's Club meeting in February. Charlie Distefano (l.) is shown with the winning pheasant tail and Matt Thomas (associate at right) won first prize in the deer rack competition. Dan Dankof (center) finished second.

Judging for the largest white tail deer racks and longest pheasant tail feathers highlighted the February meeting of the Weoma Sportsmen's Club.

Using the Boone and Crockett method, the four deer rack entries were judged with two prizes being paid. Matt Thomas, son of Norm Thomas, Dept. 704, took first place with a score of 102 while Dan Dankof (retired) placed second with a score of 78 6/8.

There were three entries in the longest pheasant tail competition with one prize being awarded. First place went to Charlie Distefano, Dept. 581. Also featured at the meeting was a video entitled, "How to Catch Bass".

Two video's will be shown at the upcoming March meeting. "How to Hunt Wild Turkeys" is a production by professional outdoorsman, J.S. Fears. He is a wildlife biologist who has written twelve books on the outdoors and is considered the best turkey hunter in the world. The second video to be shown is "Facts on Walleye Fishing" by Babe Winkelmanns.

The meeting will be held on March 7 at 7 p.m. at the Papio Natural Resources Center, Dam Site 20, 8901 South 154th Street. Refreshments and door prizes will be available.

Women's Walk April 21

The UNO Women's Walk will be held April 21 at the UNO track beginning at 10:00 a.m. This Saturday event is sponsored by the UNO Women's Athletics department.

Each participant collects pledges for the number of laps they can make around the quarter-mile track in one-half hour. If you collect and turn in \$200 by April 13, you are eligible for a drawing for two Continental Airlines tickets. After the walk a free continental breakfast will be held in the UNO fieldhouse.

If you are interested contact Judy Stroy, x3674, by March 7. Information and pledge sheets are available in the Employees Mall.

Bowling Tournament to Begin in May With Entry Deadline March 30

The 31st Annual Weoma Club Bowling Tournament is scheduled for Saturday and Sunday, May 5 and 6 and Saturday, May 12 at Western Bowl in Millard. (Last week's issue of the Weoma Club News erroneously reported the tournament to begin in March).

The deadline for entering the tournament is March 30, according to Nancy Carbonell, tournament director.

Entry forms are now available in the Employees Mall and from tournament committee member listed below.

Linda Sellin, x3064, 3rd Shift
Nancy Carbonell, x3546, 1st Shift
Jesse Welker, x3141, 3rd Shift
Art Clausen, x3867, 1st Shift
Dale Wineinger, x3151, 1st Shift
Sam Baker, x4896, 1st Shift
Ethel Payton, x3727, 1st Shift

The committee urges everyone to participate in this annual event.

WEOMA CLUB SPORTS

NOTE:

League Secretaries are asked to turn in score results each week to the Weoma Club.

- Editor

Racquetball

DIVISION II

STANDINGS

	WON	LOST	% WON
CURLEY, Mike	38	13	74.5
CANAL, Luis	31	11	73.8
WARD, Cecil	35	13	72.9
KAHLER, Gary	29	22	56.9
HUNT, Jeff	23	25	47.9
GRABENBAUER, Jim	21	24	46.7
TRUE, Phil	12	36	25.0
JOHNSON, Bill	0	45	0.0

DIVISION III

STANDINGS

	WON	LOST	% WON
WELKER, Jesse	42	3	93.3
PETERSON, Jim	37	11	77.1
MAUCH, Scott	34	14	70.8
COMMONS, Mike	28	20	58.3
PEREZ, Paul	28	20	58.3
SCHAFFER, Steve	20	28	41.7
LUDWIG, Bob	19	29	39.6
RUNNELS, Rich	19	29	39.6
HAZUKA, John	6	42	12.5
WINDHOLZ, Rick	3	42	6.7

Bowling

WORKS SERVICE LEAGUE

STANDINGS

	WON	LOST
WESTERN BOWL	115	60
BROADWAY BOWL	113	62
HIGGINS TROPHIES	108	67
W.E.R.M. ENTERPRISES	106	69
THE NEW COTTNER STREET	100	75
ERASER HEADS	97	78
JESTERS	95	80
A.C.I.	94	81
TOP GUN II	91	84
COHEN & KELLY'S	85	90
JETS	75	100
OMALO'S	74	101
JUST PLAIN LUCKY	73	102
JUST IN TIME	66	109
SABRES	64	111
THE EASY GOERS	46	129

HIGH GAMES & SERIES-

John Francavilla (223-628), Gene Stuto (219, 215-623), Dick Nightser (238-606), Mike Fager (222-596), Dennis Glessmann (590), Loren Wacker (214-580), Steve Bothwell (574), Glen Maxwell (569), Chuck Schultz (225-567), Tim Ward (562), Dave Chonis (558), Bob Bloodsworth (554), Ron Siwa (553), Archer Witherell (552), Darrell Seaton (235), George Brown (210).

WEOMA CLUB NITE OWLS MIXED LEAGUE

STANDINGS

	WON	LOST
DODGERS	118	66
NO GAS	118	66
NITE CRAWLERS	110	74
FIVE NINES	110	74
ALL MOST	104	80
UP YOUR ALLEY	100	84
YA BUTS	98	86
EZ III	92	92
HAVEN FUN	90	94
LADIES & THE TRAMP	90	94
TWO HITS & A MISS	88	96
DILLIGAF	84	100
ROLLERS	74	110
2 BEER & A MIX	70	114
BALL BUSTERS	70	114
ART'S KIDS	56	128

MEN'S 200 GAMES-

Don Huenniger (203), Norb Totosz (210, 204, 209), Rusty Findeis (219, 210), Don Horvath (211), Bob Goodwin (231), Bill Placek (202, 200), Chuck Pridgeon (203), Stan Puchalski (212, 200), Steve O'Dell (215), Bob Jones (209), Chuck Schultz (221), Otis Knutson (202, 213), Dale Kreick (203, 216), Mick McGuire (202).

WOMEN'S 170 GAMES-

Helen Solomon (209, 232), Pat Griffin (172, 186, 170), Karen Dappen (192), Donna Wajda (183), Bettye Davis (179), Sandy Barnes (220, 200).

MEN'S 500 SERIES-

Otis Knutson (596), Dale Kreick (577), Mick McGuire (527), Dave Hochstein (507), Bob Jones (559), Chuck Schultz (576), Mitch Scott (526), Stan Puchalski (586), Bill Deegan (540), Steve O'Dell (574), Chuck Pridgeon (533), Lauren Throener (521), Bill Placek (573), Bob Goodwin (573), Norb Totosz (623), Dennis McNulty (515), Don Horvath (551), Rusty Findeis (627), Don Huenniger (535), Tim O'Connor (510).

WOMEN'S 450 SERIES-

Sandy Barnes (586), Donna Wajda (460), Bettye Davis (489), Karen Dappen (478), Helen Solomon (597), Pat Griffin (528), Jessie Knutson (458).

SPLITS-

Jessie Knutson (3-10), Jelen Solomon (3-10) Sandy Barnes (3-10).

WEOMA CLUB FRIDAY MORNING MIXED LEAGUE

STANDINGS

	WON	LOST
STARS	118	74
UNCONSCIOUS	112	80
MISFITS	112	80
SWEAT SHOP	108	84
LATE COMERS	104	88
STRIKES	100	92
SHOULD A BEEN	98	94
WILD BUNCH	90	102
BALL BUSTERS	72	120
FLIPS FLOPS	46	146

HIGH SCORES-

Jim Plevniak (223-587), Gene Chleboun

(206-554), Bob Roh (535), Alta Morris (220-534), Joe O'Grady (532), Jerry Giesing (526), Judy Hunt (192, 192-521), Chuck Schultz (203-520), Carol Fuksa (195-513), Bob Goodwin (508), Denny Todd (507), Pat McPherson (502), Annie Davis (222).

WEOMA CLUB FRIDAY AFTERNOON MIXED LEAGUE

STANDINGS

	WON	LOST
HELP	106	70
TEN PINS	105	71
WE BAD	101	75
ACES	98	78
GEMS	94	82
WE TRY	92	84
JETS	83	93
ROSES & THORNS	72	104
VIKINGS	65	111
WILD BUNCH	64	112

200 GAMES & 500 SERIES-

Marion Panowicz (527), Bill Sharpe (220-574), Wally Petersen (502), Tom Pallas (531), Sue O'Dell (201-526), Earl Miles (501).

SPLITS-

Wally Petersen (3-10), Joy Benning (3-10, 3-10).

Volleyball

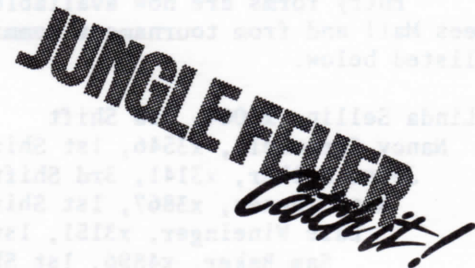
WEOMA CLUB THURSDAY VOLLEYBALL LEAGUE

Results of February 22-

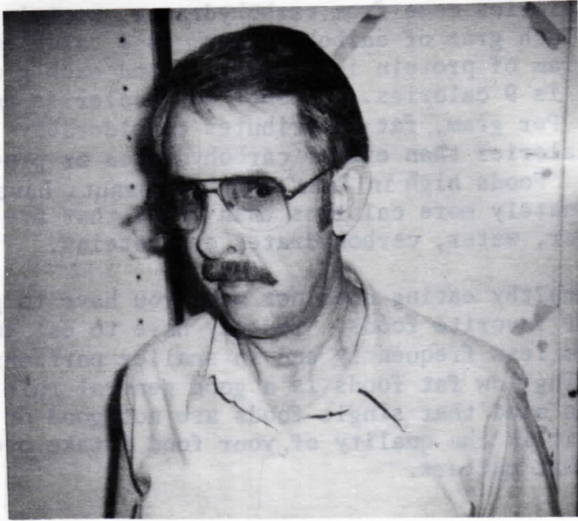
Kinks 5 games to 0 over P.G.D.'s
Local Yocals 5 games to 0 over Joe's Team
Vic's Team 3 games to 2 over Spikers
Smurfs 5 games to 0 over Weebie Dweebies

STANDINGS

	WON	LOST
KINKS	33	2
SMURFS	31	4
LOCAL YOCALS	24	11
P.G.D.'S	18	17
VIC'S TEAM	15	20
JOE'S TEAM	8	27
WEEBIE DWEBBIES	8	27
SPIKERS	6	29



Safety Awareness Contest



Roger Plummer, Dept. 581-A, is the last winner in February in the Safety Awareness Contest. The question asked was: "In the picture, a push stick is being used on what type of equipment?"

Without hesitation, Roger answered "a table saw." He now owns a new Nor-elco coffee pot. The March Safety Awareness Fact sheets are now available.

If you have not received one, ask your supervisor. Good luck to all.

SAFETY TRIVIA

by Shirley

TRIVIA ABOUT LUNG CANCER-

1. What is the ACS?
2. What is an organization of?
3. Through the Society's public education program, emphasis is given to what?
4. Where does cancer most strike?
5. Name two things the ACS places high priority on.

ANSWERS

1. The American Cancer Society is a national voluntary health agency fighting cancer through research, education and service and rehabilitation for the cancer patient. 2. People helping people. 3. Emphasis is given to what people can do to help protect themselves against cancer. 4. The lung, breast, colo-rectum, uterus, oral and skin. 5. (1) Cure, and (2) prevention of the disease.

Organizational Meeting for Ladies Golf Today

There will be an organizational meeting for the Weoma Club Women's Golf League today, Wednesday, March 7 at 10:00 a.m. in the Pioneer Room. Agenda items will include how teams are formed this year (picking own teams versus assigned teams), proposed by-law changes, the 1990 golf outing and the new golf course location beginning with the 1991 season.

New members are encouraged to attend. Questions should be directed to Carla McKnight, Department 1723, extension 4927.

Ski Club Update

by Bob Sterba

With the disbursement of the appropriate refund envelopes to ski trip participants, I performed what will, most likely, be my last official duty as president of our Club. My successor has yet to be determined so watch the Weoma Club News for further information.

I would like to thank everyone who made my past four years as club president and trip leader some of the most enjoyable and rewarding times of my life. I've never tried anything like this before and I feel I have learned much about myself and other people in the process.

You are a great group to work with! I can certainly see how putting one of these trips together could be a harrowing experience with the wrong people involved.

A special thanks to our Vice President (now retired) Gary Williams who took over for Dick Oglevie after his tragic accident. Thanks for a fine job, Gary.

Looking forward to going on the next trip as just a skier.

Bob Sterba

Crochet Club Meeting

The Pioneer Crochet Club will meet Tuesday, March 13 in the Pioneer/Weoma Club Workroom at 4:00 p.m. New members are welcome.

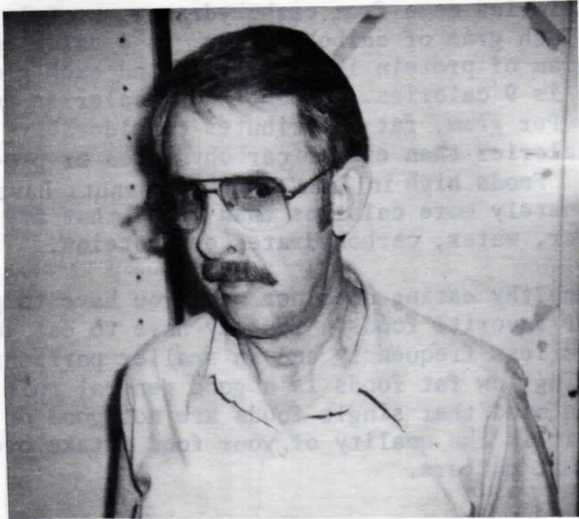
Thank You Note

Thank you for making my retirement coffee special. I'll miss all of you. You will always be part of my life. Gog bless each one of you.

Love,

Nora Hunt

Safety Awareness Contest



Roger Plummer, Dept. 581-A, is the last winner in February in the Safety Awareness Contest. The question asked was: "In the picture, a push stick is being used on what type of equipment?"

Without hesitation, Roger answered "a table saw." He now owns a new Nor-elco coffee pot. The March Safety Awareness Fact sheets are now available.

If you have not received one, ask your supervisor. Good luck to all.

SAFETY TRIVIA

by Shirley

TRIVIA ABOUT LUNG CANCER-

1. What is the ACS?
2. What is an organization of?
3. Through the Society's public education program, emphasis is given to what?
4. Where does cancer most strike?
5. Name two things the ACS places high priority on.

ANSWERS

1. The American Cancer Society is a national voluntary health agency fighting cancer through research, education and service and rehabilitation for the cancer patient. 2. People helping people. 3. Emphasis is given to what people can do to help protect themselves against cancer. 4. The lung, breast, colo-rectum, uterus, oral and skin. 5. (1) Cure, and (2) prevention of the disease.

Organizational Meeting for Ladies Golf Today

There will be an organizational meeting for the Weoma Club Women's Golf League today, Wednesday, March 7 at 10:00 a.m. in the Pioneer Room. Agenda items will include how teams are formed this year (picking own teams versus assigned teams), proposed by-law changes, the 1990 golf outing and the new golf course location beginning with the 1991 season.

New members are encouraged to attend. Questions should be directed to Carla McKnight, Department 1723, extension 4927.

Ski Club Update

by Bob Sterba

With the disbursement of the appropriate refund envelopes to ski trip participants, I performed what will, most likely, be my last official duty as president of our Club. My successor has yet to be determined so watch the Weoma Club News for further information.

I would like to thank everyone who made my past four years as club president and trip leader some of the most enjoyable and rewarding times of my life. I've never tried anything like this before and I feel I have learned much about myself and other people in the process.

You are a great group to work with! I can certainly see how putting one of these trips together could be a harrowing experience with the wrong people involved.

A special thanks to our Vice President (now retired) Gary Williams who took over for Dick Oglevie after his tragic accident. Thanks for a fine job, Gary.

Looking forward to going on the next trip as just a skier.

Bob Sterba

Crochet Club Meeting

The Pioneer Crochet Club will meet Tuesday, March 13 in the Pioneer/Weoma Club Workroom at 4:00 p.m. New members are welcome.

Thank You Note

Thank you for making my retirement coffee special. I'll miss all of you. You will always be part of my life. Gog bless each one of you.

Love,

Nora Hunt

MARCH IS NATIONAL NUTRITION MONTH

NUTRITION TIPS:

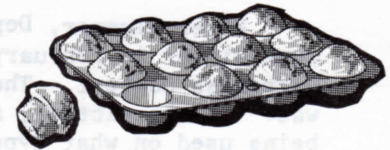
Recommendations from the Surgeon General, the American Dietetics Association and the American Heart Association for a healthy diet include a diet from which no more than 30% of your calories come from fat, 15% from protein and the remaining 55% from carbohydrates. How do you practice this in your diet?

In order to practice these recommendations you have to begin reading labels and determining the contents of food products. The weight of a food substance will be presented in grams, 1/28 of an ounce, about the weight of a paper clip. One gram of fat is equivalent to about 1/4 teaspoon.

For example, a vending machine package of M&M's (1.69 ounces) contains 10 grams of fat, about 2.5 teaspoons of FAT. Moreover there is very little nutritional value in a bag of M&M's, no vitamins at all and lots of calories.

Calories come from carbohydrates, protein and fat. Each gram of carbohydrates is 4 calories, each gram of protein is 4 calories and each gram of fat is 9 calories. Alcohol is 7 calories per gram. Per gram, fat contributes considerably more calories than either carbohydrates or proteins. Foods high in fats such as peanuts have proportionately more calories than foods that are high in fiber, water, carbohydrates or proteins.

Healthy eating does not mean you have to give up your favorite foods. You may have to eat some of them less frequently and in smaller portions. Selecting low fat foods is a good general rule. Keep in mind that single foods are not good or bad---it is the quality of your food intake over time that matters.

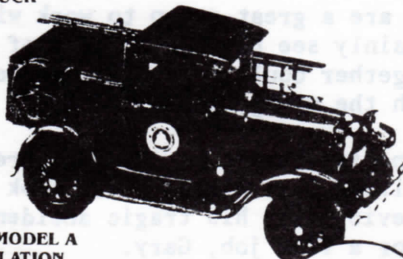


Shop at the Pioneer Porch

authentic scale model replicas in minute detail and color.

ORIGINAL "1931" MODEL A FORD TELEPHONE LINE INSTALLERS TRUCK

1



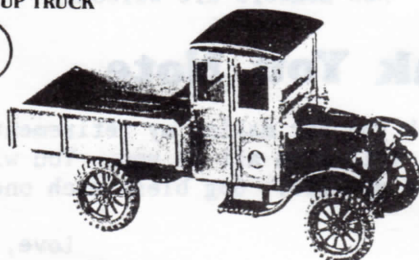
ORIGINAL "1931" MODEL A FOR LINE-INSTALLATION UTILITY TRUCK

3

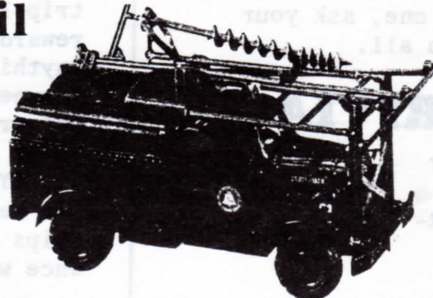


ORIGINAL "1927" MODEL TT FORD PICK-UP TRUCK

5

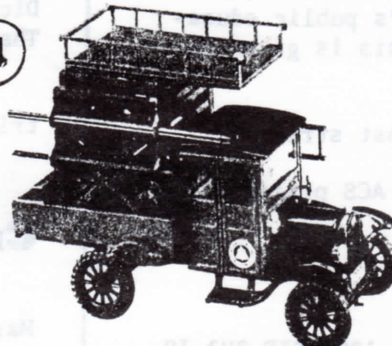


ORIGINAL "1950 DODGE" 4-WHEEL DRIVE HYDRAULIC POLE DIGGER/DERRICK TRUCK



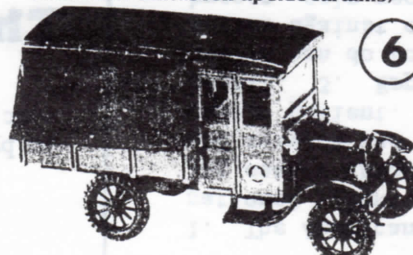
ORIGINAL "1927" MODEL TT FORD "CHERRY PICKER" TRUCK (with telescoping platform).

4



ORIGINAL "1917" Model TT FORD WAGON (with Black Canvas roll-up side curtains)

6



Only \$16.95 ea.

Health Muffins

For best results, use coated muffin pans or foil instead of paper liners.

- 1 cup shreds of wheat bran cereal
- 1 cup water
- 1 teaspoon baking soda
- 1 cup nonfat buttermilk
- 1 cup quick cooking oats, uncooked
- 1 cup chopped dried peaches
- 1 cup raisins
- 1/2 cup all-purpose flour
- 1/2 cup whole wheat flour
- 1/3 cup sugar
- 1/2 cup teaspoon salt
- vegetable cooking spray

Combine cereal and water in bowl; let stand 5 min. Dissolve baking soda in buttermilk; stir. Add buttermilk, oats and next 6 ingredients to cereal; stir just until dry ingredients are moistened.

Spoon batter into muffin pans coated with cooking spray, filling 2/3 full. Bake at 375 degrees for 15 min. Remove from pans; let cool on a wire rack. Yield: 20 muffins (about 128 calories ea.)

JUNGLE FEVER

Catch it!

JOIN OMAHA'S HENRY DOORLY ZOO

The in-plant Zoo Membership Drive is now in progress. Don't let this great opportunity pass you by!

The \$35. membership will provide you and your family a season of enjoyment at Omaha's finest, and favorite, attraction.



Weoma Board to Consider Admitting Bicycle Club

Twenty-nine employees have signed-up to form a bicycle club at the Omaha Works. The Weoma Club board of directors will meet on Thursday, March 8 to consider their application for associated club membership.

The purpose of the club is to promote bicycle related group activities and to assist beginners in the basic techniques of riding and equipment selection among other items listed in the petition.

**LOAD UP THE FAMILY
AND JOIN THE
CROWD AT THE**

**PIONEER
PARKING
LOT
SALE**



SUNDAY, MARCH 25



AT&T

**IBEW - AT&T
ETOP**



PRESENT...

BEGINNING, LOTUS AND AUTOCAD COMPUTER CLASSES
Conducted by O/E Learning, Inc.

- ☛ Classes will run April 9, 1990 through June 29, 1990!!
- ☛ Deadline to sign up for class is March 16th!
- ☛ You must have completed the Beginning before taking Lotus or Autocad.

CLASS SCHEDULE

MONDAY	TUESDAY	WEDNESDAY	THURSDAY	FRIDAY
		SECTION #7 8:45 AM - 11:15 AM LOTUS	SECTION #10 8:45 AM - 11:15 AM AUTOCAD	LAB
SECTION #1 12:45 PM - 3:15 PM BEGINNING	SECTION #4 12:45 PM - 3:15 PM LOTUS	SECTION #8 12:45 PM - 3:15 PM LOTUS	SECTION #11 12:45 PM - 3:15 PM AUTOCAD	8:15 AM - 5:00 PM
SECTION #2 4:15 PM - 6:45 PM BEGINNING	SECTION #5 4:15 PM - 6:45 PM LOTUS	SECTION #9 4:15 PM - 6:45 PM LOTUS	SECTION #12 4:15 PM - 6:45 PM AUTOCAD	
SECTION #3 7:00 PM - 9:30 PM BEGINNING	SECTION #6 7:00 PM - 9:30 PM LOTUS			

Contact your supervisor for the proper form or pick one up in the information racks in the main cafeteria.

CLASSIFIED ADS

Advertisements must be submitted to the Weoma Club office absolutely no later than 7 a.m. on Wednesdays for the following weeks' issue.

Wanted

RADIATOR, CONSOLE, GRILL & SS LETTERING: for 1968 Camaro. 331-5691.

RADIAL TIRES: good, used, 235-255, 50 & 60 series. 331-5691.

SEVERAL CATS: any type welcome, call only after 6 p.m. 334-4454.

CANON CAMERA F1: do not need lens. 345-4789 after 4 p.m.

For Sale

Home Entertainment

OUASAR CONSOLE TV: beautiful, 25", good working condition, \$100. 345-5803.

Sports Equipment

SPRING SPORT SHOES: black Kudos brand soccer shoes, size 11, \$12. NIKE BRAND TRACK SHOES: white w/cleats & wrench, size 11 1/2, \$7. 551-3341.

Home Furnishings

LIVING ROOM CHAIR: \$15. 895-3258.

SOFA SLEEPER (queen): w/matching love seat, good condition, both for \$300 or will sell separately. KITCHEN TABLE (round): wood grain w/4 vinyl swivel chairs on casters, good condition, \$100. 733-6627 after 4 p.m.

JENNY LIND BABY BED: w/mattress. Infant car seat carrier. 392-1132.

WATER BED: super single w/headboard, good condition, \$50. 734-7494 after 4 p.m.

Appliances

AIR KING POWER HUMIDIFIER: \$20. 895-3258.

Lawn & Garden

A.M.F. LAWN & GARDEN TRACTOR PARTS: new. 331-5691.

Real Estate

LAKE HOME: completely furnished, excellent condition, \$39,500 or make offer. 895-3258.

Tires

WILD COUNTY RVT RADIAL TIRES (4): 31 X 10 1/2 R15 LT on 15" spoked rims that fit Ford truck, 25,000 mi. on tires, \$250. or best offer. 333-0170.

TIRES (4): P215/75 R15 on rims for Chevy, lots of tread, \$75. 734-0393 after 5 p.m.

Parts & Accessories

TAILGATE: for 1973-'79 Ford pickup, excellent shape, \$75. FULL GRILL GUARD: chrome, for 1973-'79 Ford pickup, \$15. 322-1939 after 5 p.m. Council Bluffs, IA

Vehicles

1972 MONTE CARLO: nice car, runs great. 1955 CHEVY PICKUP: 1/2-ton, rare body design. 331-5691.

1986 MERKUR XRTI: 3-dr., 4 cyl., turbo, auto., heated leather power seats & heated mirrors, PW, bra, 37,000 mi.

1987 DODGE DAKOTA: auto., power, 36,000 mi. Both have extended service warranty, both like new inside & out, \$8,000. or offer, each. 443-5308, anytime.

1986 MUSTANG GT 350: red, 5.0 5-speed, 61,000 mi., fine condition. 496-4654 after 6 p.m.

1983 FORD CUSTOM VAN: red & silver, PB, PS, tilt, cruise, (4) captain's chairs, bench seat, very good condition. 1-443-4350. Wahoo, NE.

1983 OLDSMOBILE FIRENZA: 2-dr. hatchback, 2-tone blue, PS, PB, air, AM/FM, no rust, excellent shape, 80,000 mi., 5-speed, \$2,500. 734-6669.

1984 KAWASAKI LTD 550: like new, 9,200 mi., \$1,000. 731-7589.

Misc.

PROPELLER: for larger Mercury outboard, 25 pitch, \$40. or best offer. 333-0170.

REMOTE CONTROL CAR: (Grasshopper) radio, 7.2 volt battery & charger, larger motor & extra tires, \$90. or offer. 289-4527. Elkhorn, NE.

COMMODORE 64 COMPUTER: 1541 disk drive, keyboard, modem & some software, \$175. or offer. 289-4527. Elkhorn, NE.

STIHL CHAIN SAW: \$120. WEIGHT SET & BENCH: 110 lbs., \$95. 895-3258.

LASER 128 COMPUTER: 12" console & printer, software, \$700. 443-5308, anytime.

COMING SOON...

Pioneer

Easter

Food DRIVE

BEGINS MONDAY,

APRIL 2 AND

CONTINUES THRU

FRIDAY, APRIL 6

Puttin' On The GLITZ

CROWN HALL
APRIL 7, 1990

COCKTAILS 6 P.M.

DINNER 7 P.M.

(FASHION) SHOW 8 P.M.

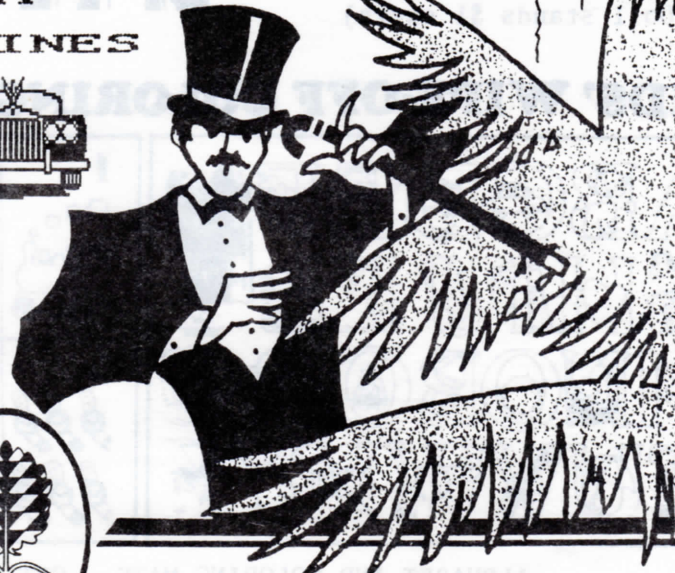
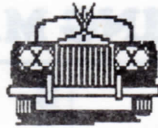
(DINNER CHOICES ARE STEAK OR SHRIMP)

TICKETS
\$13.50 EA.

ON SALE MARCH 26

ENTERTAINMENT BY KOIL D.J.
CATHIE FIFE

• GRAND PRIZE •
A NIGHT ON THE TOWN
LIMO & DINNER
AT
MAXINES



T. REMBERS

THE PIONEER PORCH

Shop the Store
Where Quality
Costs You Less!

Months to Remember™
Porcelain Collectible Dolls

RUSS



\$12.

April

START YOUR COLLECTION
NOW!
ONE FOR EACH MONTH OF
THE YEAR
(Doll stands \$1 extra)

ABRACADABRA™

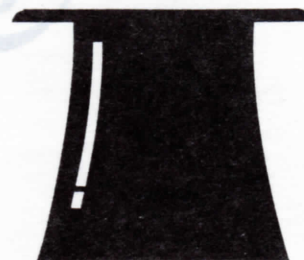
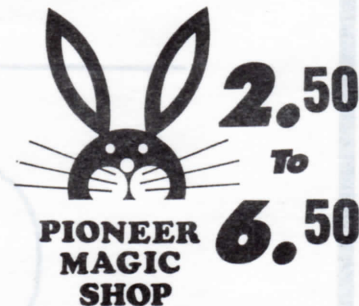
The silk handkerchief appears from an empty hand. Then it immediately vanishes.

A piece of rope can stand on its own. With a gesture, it changes into a silk scarf.

Three different lengths of rope become equal in length in a flash.

YOU, TOO, CAN PERFORM
ACTS OF MAGIC JUST LIKE
THE GREAT HOUDINI!

START YOUR SET OF EIGHT
MAGIC TRICKS NOW!!!



WIND SOCKS

- 40" NEBRASKA - 2 COLOR
- 40" IOWA U. - 2 COLOR
- 40" IOWA ST. - 2 COLOR

\$8.50

- 40" NEBRASKA - 3 COLOR

\$10.50

- 60" NEBRASKA - 2 COLOR

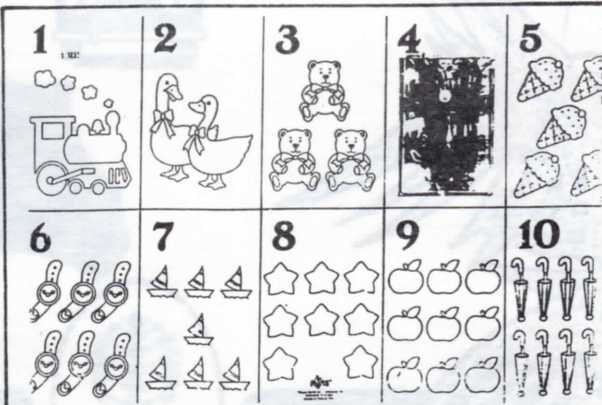
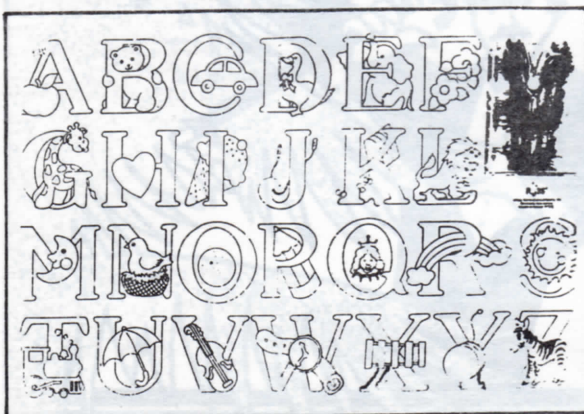
\$11.50

- 60" NEBRASKA - 3 COLOR

\$13.50



KIDS' WIPE-OFF COLORING MATS \$3²⁵ each



ALPHABET AND COLORING MATS...GET BOTH WHILE AVAILABLE

STORE HOURS

MONDAY	
7:30 a.m. - 8:30 a.m.	10:30 a.m. - 12:30 p.m.
3:00 p.m. - 4:00 p.m.	
WEDNESDAY	
7:30 a.m. - 8:30 a.m.	10:30 a.m. - 12:30 p.m.
3:00 p.m. - 4:00 p.m.	
THURSDAY	
10:30 a.m. - 12:30 p.m.	7:00 p.m. - 8:30 p.m.
FRIDAY	
3:30 a.m. - 5:00 a.m.	7:30 a.m. - 8:30 a.m.
10:30 a.m. - 12:30 p.m.	3:00 p.m. - 4:00 p.m.