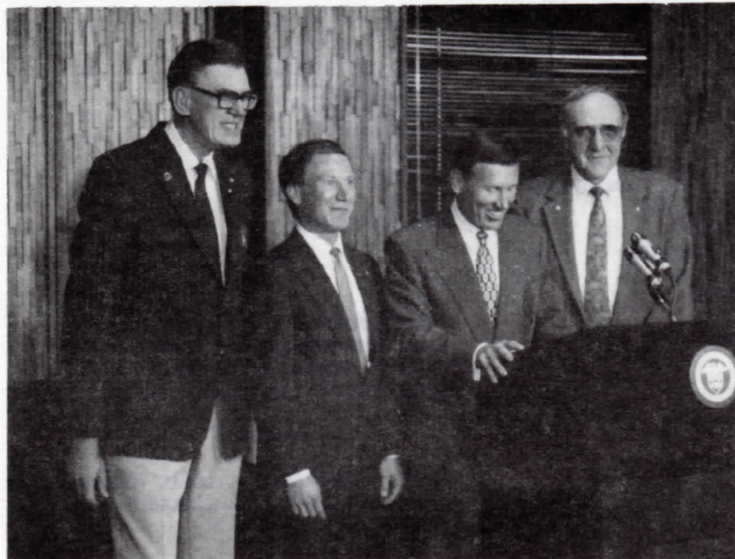


Weoma Club NEWS

May 16, 1990



Proclaiming Toastmasters Week at a ceremony at the City-County Civic Building is Omaha Mayor P.J. Morgan, second from right. With the mayor are Toastmasters (l. to r.) Dick Brazis, Offutt Air Base; Bob Glaze, Union Pacific; and Bob Beardsley, AT&T.

Toastmasters Week Proclaimed by Mayor

The week of May 16 has been proclaimed as Toastmasters Week and the District 24 semi-annual conference of Toastmasters will be held on May 18-19. Representatives from Nebraska and Iowa will attend the two-day event at the Old Mill Holiday Inn.

The Weoma Toastmasters will sponsor the conference and Omaha Works' Bob Beardsley will act as conference chairman.

Recently, representatives of three area Toastmaster Clubs met with Omaha Mayor P.J. Morgan who presented them with proclamations announcing Toastmasters Week.

BENEFIT BULLETIN

YOUR HEALTH BENEFIT ROOM HOURS

CALL FOR AN APPOINTMENT: x-4954
Room 32, Bldg 20-1

7:30 a.m. - 10:00 a.m.
1:00 p.m. - 4:00 p.m.

Lightning Shatters Tree and Nerves in Department 582

The tall evergreen tree in the center of the mall has been used as a Christmas tree, filled with colorful lighting during the holidays. In the early hours of Wednesday, May 9, the tree was lighted again, although unexpectedly, by a bolt of lightning. Christmas in May?

Mother Nature's electrical charge hit the tree and followed the underground conduit leading to the control panel in the Punch Press area on the west side of Building 30. The charge blew the cover off the electrical box which then slammed into a die rack, puncturing the back metal panel. Third shift employee, Dean Timmerman, had just passed the area while closing windows when the rain storm began around 3:45 a.m. Seconds later the lightning struck.

The tree suffered severe damage and the force of the lightning strike lifted the soil into a pile near the tree. Department 582 (Punch Press area) was without lights for about 45 minutes. The stately evergreen tree was removed the same day.



The evergreen tree, stripped of its bark, stands next to debris caused by lightning that struck at 3:45 a.m. May 9. More photos can be found on page 5.

Weoma Club Sports

NOTE:

League Secretaries are asked to turn in score results each week to the Weoma Club.

- Editor

KNOLLS LEAGUE

STANDINGS

	PTS.
THE DRIVERS	17½
THE REBELS	17
THE DIVOTS	13½
THE OTHERS	12½
THE CEMENT CLUBS	12½
CHIP & PUTT	11½
THE HOT SHOTS	5
LOW NET (1 & 2)- Allen (36), Lawson (36)	
LOW GROSS (1 & 2)- Martin (42)	
LOW NET (3 & 4)- Hunt (37)	
LOW GROSS (3 & 4)- Callihan (46)	

MONDAY NIGHT MIXED LEAGUE

STANDINGS

	PTS.
SIX SHOOTERS	13
TENTH TEE	13
WESTWOOD HO'S	12
STICKS & CHICKS	10½
PARBUSTERS	10
T TOPPERS	9
CHOKERS	8½
GEMS	8½
FOUR STROKERS	8½
SWINGERS	7
LOW NET- Hermanson(18) Karloff (22)	
LOW GROSS- Stratbecker (38), Woltz (31)	

Softball

TUESDAY NIGHT SOFTBALL STANDINGS

	W	L
BALLS AND STROKES	3	0
LOCAL YOCALS	2	1
IBEW SLUGGO'S	2	1
ELMO FUDD'S	2	1
SO OMAHA EAGLES	2	1
NOVOTNY'S	1	2
BUD'S	0	3
BOYS OF SUMMER	0	3

WEEK 1

IBEW SLUGGO'S 4...BOYS OF SUMMER 3
BALLS AND STROKES 10...NOVOTNY'S 5
SO OMAHA EAGLES 12...BUD'S 5
LOCAL YOCALS 12...ELMO'S 11

WEEK 2

BALLS & STROKES 12...LOCAL YOCALS 4
ELMO'S 10...SO OMAHA EAGLES 6
SLUGGO'S 13...BUD'S 2
NOVOTNY'S 15...BOYS 5

WEEK 3

ELMO'S 15...NOVOTNY'S 6
SO OMAHA EAGLES 9...SLUGGO'S 2
BALLS & STROKES 13...BOYS 3
LOCAL YOCALS 22...BUD'S 12

Golf

WEOMA GOLF CLUB ELMWOOD LEAGUE

STANDINGS

	PTS.
SHOP PROS	14½
XXXXX-OUTS	14
SIX-IRONS	13½
SOD SQUAD	9½
BALL BANGERS	8½
THE BOYS CLUB	8½
TOGEYS	8
TRADE WINS	3½
LOW NET (Front)- Hotchkiss (29)	
LOW GROSS (Front)- Light (33)	
LOW NET (Back)- Seaton (32)	
LOW GROSS (Back)- Kamino (42)	
BIRDIES- Miller (#6), Light (#1, #3, #6, #9), Sempek (#15)	

TUESDAY MORNING APPLEWOOD GOLF LEAGUE

STANDINGS

	PTS.
GOOD GUYS	22½
RUFFIANS	18
WRECKING CREW	16
OUT OF BOUNDS	15½
DUFFERS	15½
JOES CORNER	12½
BOGEYS	10½
SENIORS	9½
LOW NET (1 & 2)- Hunter (37), Kovar (38), Pickrel (38), Schroeder (38)	
LOW NET (3 & 4)- Knutson (29), Anderson (35)	


FRIDAY NIGHT APPLEWOOD GOLF LEAGUE

STANDINGS

	PTS.
TOURWINS	18
FOUR PLAYERS	10½
LUCKY ONES	10
FAIRWAY DEMONS	8½
TOP FLITES	8½
NO NAMES	4½
LOW NET (1 & 2)- Bizal (35), Francavilla (36)	
LOW NET (3 & 4)- Palacios (35), Burgett (39)	

WEOMA CLUB SPORTS

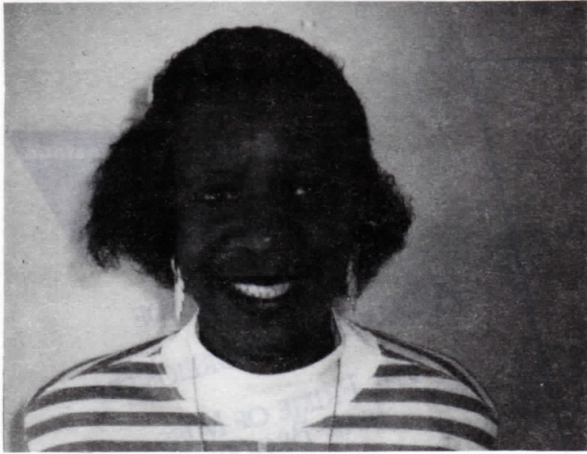
**WHAT ELSE IS THERE TO DO WHEN YOUR
 GIRL FRIEND HAS LEFT YOU, YOUR
 TV SET IS BROKEN AND YOUR
 JOGGING SUIT IS IN THE WASH?**



**GIVE BLOOD
 BLOODMOBILE**

**VISIT
 THE
 BLOODMOBILE
 TOMORROW
 OR
 FRIDAY
 AND
 MEET
 YOUR FRIENDS**

Safety Awareness Contest



CONNIE JONES now owns a Sunbeam digital scale. She's the second winner in May's Safety Awareness Contest. "What's the most common eye hazard?" was the question we asked Connie. Even though she hadn't seen the fact sheet, she answered "flying particles." We congratulate Connie for knowing the correct answer. We also learned from Connie a couple of ways to stand on the scale to make it look like we've lost a couple of pounds. Just ask Connie for suggestions!

SAFETY TRIVIA

BY SHIRLEY

Trivia about wild animals:

1. What is an animal's normal reaction when it encounters humans?
2. What is the best deterrent for black bears?
3. If you encounter a skunk on a hiking trail, what is the best thing to do?
4. If you see a young animal in the wild, is it safe to approach it?
5. What is one of the greatest threats to wildlife?

ANSWERS:

1. To run or to fight.
2. Loud noise. Bang on pot and pans, blow a whistle or yell. If loud noise doesn't scare the bear away, get into your car.
3. Back away from it or stand still and wait and the animal will probably walk around you.
4. No. The parents are probably nearby and will protect their young. Depending on the animal, they may scratch, bite, kick, growl, chase and stomp on you.
5. The District Superintendent for Northern California State Parks says "It's the public's adoration of the animals and people's misconceptions about their impact on the animals' lives."

Racquetball Season Wrap-up

The make-up games have been completed and the 1989-1990 Weoma Club racquetball season has come to an end with the first three places in each division being determined.

"The four divisions were very competitive throughout the season", said Charlie Newell, league president.

The first, second and third place finishers in each division are:

DIVISION I (advanced)

- 1st - Terry Kamino
- 2nd - Charlie Newell
- 3rd - Romiro Delgado

DIVISION II

- 1st - Mike Curley
- 2nd - Luis Canal
- 3rd - Cecil Ward

DIVISION III

- 1st - Jesse Welker
- 2nd - Jim Peterson
- 3rd - Scott Mauch

DIVISION IV

- 1st - Carlos Palacios
- 2nd - John Trycha
- 3rd - Larry Moody

Teton, Yellowstone Backpack Trek Offered to Employees

A group at the Omaha Works is planning a cooperative backpack to the Teton and Yellowstone National Parks the week of the July 4 shutdown. They will spend three days in the Tetons and four days in Yellowstone, on and off trails in the back-country wilderness areas.

This event is open to AT&T employees, spouses and friends with backpacking experience and is limited to fifteen people.

If you are interested in joining the group and have a high tolerance to fatigue, bear encounters, mosquitos, altitude sickness, blistered feet, primitive sanitation, indigestible food, tainted water and thunderous snoring from the tent five feet away, contact Arnie Kelson on extension 3493 no later than June 1 to register or for further information. It should be fun.

Camera Club to Meet at The Old Market May 19

The Garden Cafe will be the site of the May 19 meeting of the Weoma Camera Club, according to Dean Schwery, club president. The cafe, located at 1113 Howard Street, is in the heart of Omaha's Old Market district.

Schwery noted that there will be a photo contest based on the photographs taken in the Old Market at the June meeting. He asks all club members to meet in front of the cafe at 9:00 a.m. with camera and film. Everyone is to meet back at the Garden Cafe at 11:00 a.m. for those interested in lunch.

PLAYHOUSE

WE'VE GOT YOUR TICKET!

6915 CASS STREET

Save up to 41% by purchasing a season subscription to the internationally recognized The Playhouse. One of the nation's most successful theatres offers a Star Card, your admission to six Mainstage and four Fonda/McGuire Series plays for only \$85. Mainstage subscriptions start at a bargain - \$46.

66th Season

...IT'S THE BEST SHOW IN TOWN!

ORDER YOUR PLAYHOUSE MEMBERSHIP THROUGH US UNTIL MAY 25. CONTACT: Jerry Golmanavich, x3711 or Tammy Dean, x3709 (1st Shift) or Kathy Placzek, x3207 (2nd Shift).

Mainstage

- BIG RIVER
- DEATHTRAP
- 110 IN THE SHADE
- A BEDFULL OF FOREIGNERS
- THE PRIME OF MISS JEAN BRODIE
- HELLO DOLLY

Fonda / McGuire

- THE LAST STAND OF THE POLISH SHARPSHOOTERS
- THE BOYS NEXT DOOR
- THE MYSTERY OF IRMA VEP
- SOPHISTICATED LADIES

SUBSCRIBER BENEFITS

Savings up to 41% of single ticket admission.

Advance notice of each show and special event at The Playhouse.

Subscriber Only Box Office Days insuring the best seats in the house before sales open to the public.

Discounts and Advance Reservations for A Christmas Carol.

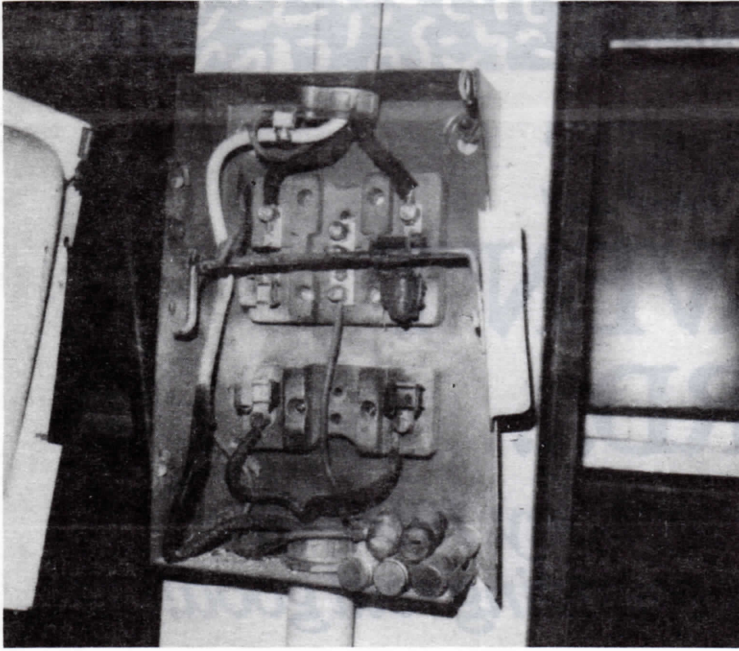
Reduced tuition for playhouse classes.

Season Ticket Options

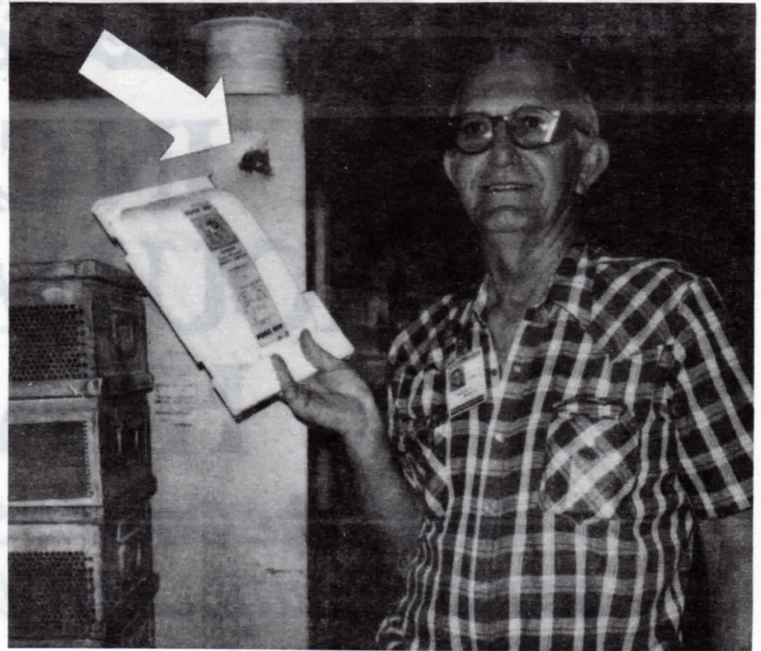
Package		Value	Price Before 7-1	Savings	Price After 7-1
StarCard	10 shows	\$145	\$85	41%	\$90
Mainstage Series					
Open Seating	6 shows	\$93	\$57	39%	\$63
Fri/Sat Reserved	6 shows	\$93	\$59	37%	\$63
Sun-Thu Reserved	6 shows	\$75	\$46	39%	\$49
Fonda/McGuire	4 shows	\$52	\$42	19%	\$45
ChoiceCard	6 shows	\$97	\$70	28%	\$75



Lightning Strikes (cont'd. from page 1)



A charred electrical box, minus its cover, hangs uselessly on the steel column in Dept. 582 after the May 9 storm. Lightning struck a tree in the courtyard and followed an underground conduit leading to the box.



The force of the lightning strike blew the cover from the electrical box, puncturing a hole (arrow) in a steel die rack. Shown holding the cover is Charlie Mathis, an employee in Dept. 582.

Discount Coupons

At various times the Weoma Club receives coupons for discounts at Omaha area businesses. To receive these discount coupons, visit the information rack in the Employees Activity Mall.

Do You Care?

Help families and children at risk! Volunteer as a Parent Aide or on the Parent Assistant Line. MAKE A DIFFERENCE! Call Child Saving Institute at 553-6000. Training begins in June.

Classified Ads cont'd.

SHOPSMITH: w/planer, bandsaw, jigsaw, \$1,200. 453-9804.

DOOR: 30" X 80", interior, \$15.
LADDER: wood, 13' extension, \$20.
731-4187.

UTILITY TRAILER: 45" x 8' tiltbed, galvanized floor, excellent condition, \$400 must see. 253-8176.

National Physical Fitness and Sports Month

May is National Physical Fitness and Sports Month. May 16, 1990 has been designated as the second annual National Employee Health and Fitness Day. You may already be active in a regular exercise program, or perhaps you have given exercise considerable thought but have never initiated a program. Wednesday, May 16, can be the beginning of future efforts to promote a healthier lifestyle.

You can join millions of others across the country and participate in this event by getting out and exercising. Walk, jog, swim, cycle or aerobic dance. Simply participate in 2- minutes of aerobic exercise on Wednesday, May 16. You may exercise before work, after work or during your break times. If you regularly walk during your breaks at work, recruit a co-worker to join you. The AT&T Omaha Works' grounds provide many excellent walking routes.


To be awarded for your participation, simply

fill out the form below and return it to the TLC office, attention Marlene Sigler. A ribbon signifying your participation will be sent to you.

Don't stop there! Let May 16 be the beginning of a lifetime of exercise.

NAME _____
DEPT. _____ SHIFT _____
ACTIVITY: I participated in Employee Fitness Day by _____

RETURN TO MARLENE PETRATIS-SIGLER, TLC OFFICE.
YOUR RIBBON WILL BE SENT TO YOU IN INTER-DEPARTMENTAL MAIL.



IN CASE YOU HAVEN'T HEARD...

*Here's the Omaha Symphony 1990-91
season lineup...and it's sounding real good!*



RAY CHARLES

SPECIAL GUEST ARTIST

Itzhak Perlman, violin

CLASSICAL CONCERT ARTISTS

Peter Serkin, piano

Carter Brey, cello

Joseph Swensen, violin

Yefim Bronfman, piano

Leila Josefowicz, violin

Yehuda Hanani, cello

Caroline Park, principal oboe

David Alan Miller, guest conductor

SUPERPOPS SERIES PROGRAMS

A Man and His Soul – Mr. Ray Charles

Gershwin and Friends – Maureen McGovern

The Empire Brass

An Evening of Rodgers & Hammerstein

A Tribute to Andrew Lloyd Webber

The Big Band Sounds

and

The Magic of Christmas

...just hear it!

For more information contact: Rae Cacioppo
X-3652 or Norma Korff X-3801. Corporate
Discount subscription form available in
Pioneer Mall and Cafeteria.

Bruce Hangen, Music Director and Conductor
William Jenks, Associate Conductor



Classified Ads

Advertisements must be submitted to the Weoma Club office absolutely no later than 7 a.m. on Wednesdays for the following weeks' issue.

Wanted

CHILD SITTING JOB: responsible 15 year old boy looking for part time work, located in Ralston Mockingbird area. 593-7479.

1960's PINBALL MACHINES: by Gottlieb, working or not. 339-8248 or 342-6993.

For Sale

Pets

KITTENS: 1 male, 2 females, all have unique markings and long hair. 556-6393 day and evenings.

TINY TOY POODLES: (2) both are loveable and cute, 1 is a female 5 1/2 months old, the other is male 4 years old, both are AKC registered, and housebroken, \$125 each. 721-6832 after 5 p.m.

Musical

PIANO: old, upright, \$200. 731-4187.

WIRLITZER ORGAN: \$100. 453-9804.

Home Entertainment

PING PONG TABLE: roll type, net & paddles, \$30. 895-6482.

ADMIRAL CONSOLE STEREO: \$25. 453-9804.

PIONEER SR202 STEREO: reverberation amplifier, 2 tape deck hook-up capability, 35 watts, works great, \$125, BSR TURNTABLE: 4 speed automatic changer (needs needle), \$20. 571-6797 or 493-2382.

Recreational

PROP: for larger Mercury 25" pitch, \$40. 333-0170.

Home Furnishings

SILVER WARE CHEST: on legs with 3 drawers, 3 mos old, paid \$159 will sell for \$70. 496-3402 after 4:15 p.m. ask for Sally.

FLOOR LAMP: \$14, END TABLE: \$5, BIG LAMP: \$20. 731-4187.

Appliances

HEAVY DUTY GE WASHER & HOTPOINT DRYER: \$75 per pair, STATE WATER HEATER: 30 gal, 1 mo old, \$100 or trade for propane 30 gal, 453-9804.

TAPPAN ELECTRIC RANGE: with continuous clean oven, good clean condition, \$100. 341-8601.

SPEED QUEEN WASHER & DRYER: white, pair \$75. 731-4187.

SPEED QUEEN WASHER & DRYER: electric, multi-cycle, older models in good working condition, \$150. 333-0170.

SEWING MACHINES: (3) very old. 453-9804.

Garage Sales

3 family garage sale, May 17-19, Thursday & Friday, 9 a.m. - 5 p.m., Saturday 9 a.m. - noon, clothing, furniture, keyboard, 80cc motorcycle and much more, 13929 Pierce St., Omaha.

Lawn & Garden

WARDS LAWN MOWER: 21', rear bagger, runs great, adjustable height, \$30. 393-4028.

1976 TORO RIDING LAWN MOWER: 5 hp, \$225, SEARS PUSH MOWER: side bagger, \$50, SCOTTS LAWN (Drop) Spreader, \$20. 895-6482.

Real Estate

HOUSE: 3 bedroom, 1 3/4 baths, 2 car garage, tri-level in Woodhaven, new paint, roof & deck, large landscaped lot, \$70,000. 334-7359.

MOBILE HOME: 86' Champion, excellent condition, 2 bedrooms with deck, shed, central air, \$13,000. 896-6350 or 896-0823.

Parts & Accessories

CAR STEREO SPEAKERS: 2-way, 30 watts, \$30. 571-6797 or 493-2382.

WIRE WHEEL COVERS: 14" '89 '90 ply, list \$224, sell for 1/2 price. 359-2961.

351C ENGINE: w/torque conv and bell housing, \$100. 453-9804.

Vehicles

1980 SUZUKI: 450, 6,000 miles, black, great condition, \$500 or better offer. Ashland 944-7078 or 944-7412 after 5 p.m.

1978 OLDSMOBILE: Delta 88 Royale, 4 door, 350 automatic, good solid dependable car, \$600 firm. 397-0216 after 5 p.m.

1983 OLDSMOBILE: 98 Regency, 4 door, full power, rose beige, V8 engine, excellent condition. 332-4581 after 5 p.m.

1948 CHRYSLER TRAVELER: 4 door sedan, original owner, good condition, restorable condition, Lincoln, NE, 423-9275 or 466-7822.

1978 OLDSMOBILE: Delta 88, no rust, loaded with power equipment, new tires, set-up to haul ski boat, a good buy for only \$950. 712-322-6959 Council Bluffs IA.

1971 MONTE CARLO: 62,000 miles, new tires, interior exceptional, many new parts, first \$1,000 takes. 1-298-8932 or 331-8954 after 5 p.m.

1969 CAMARO: body rough, 350 engine totally redone, newly rebuilt transmission. 330-4820 after 5 p.m. week days.

Miscellaneous

BIKE: girl's 16' with training wheels, good shape, \$35. 895-4898 call after 4 p.m.

BRICKS: 150 assorted, free to a good home. 339-0142.

ANTIQUES: Singer sewing machine, \$75 (works), school desk, \$15, church pew, \$80, old truck, \$25, entry way hall tree with mirror & drawer, \$75. 496-3402 after 4:15 p.m. ask for Sally.

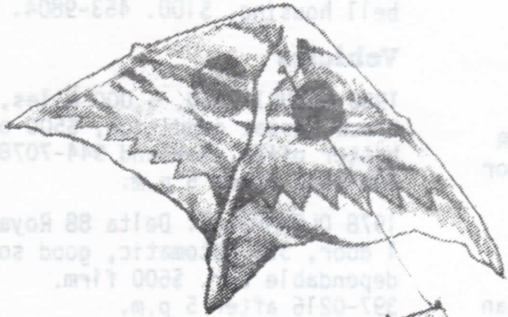
ROLLER SKATES: Girl's Pacer indoor skates size 6, \$20. 571-6797.

TYPEWRITER: 453-9804.

(continued on page 5)

The Pioneer Porch

**MAY
DAZE SALE!**



STORE HOURS

MONDAY

7:30 - 8:30 a.m.
10:30 a.m. - 12:30 p.m.
3:00 - 4:00 p.m.

WEDNESDAY

7:30 - 8:30 a.m.
10:30 a.m. - 12:30 p.m.
3:00 - 4:00 p.m.

THURSDAY

10:30 a.m. - 12:30 p.m.
7:00 - 8:30 p.m.

FRIDAY

3:30 - 5:00 a.m.
7:30 - 8:30 a.m.
10:30 a.m. - 12:30 p.m.
3:00 - 4:00 p.m.

SUNSHINY DAYS AHEAD--New shipments! Blues Brothers-style dark sunglasses have own neck cord, or choose safety sunglasses for outdoors chores.

\$5 each

KEEP A COOL HEAD--Faded blue "denim" cap features a terrycloth headband.

\$5.50

MUSIC, MUSIC, MUSIC--Mini headphone radio plays AM/FM. Features telescopic antenna. Lightweight body folds compactly.

\$10

WHOSE ROOM IS THIS, ANYWAY?--Whimsical door plaques for kids' rooms available in assorted names.

\$3.50

HANDY TO REACH--Mini-flashlight is stored in holder that attaches to wall. Remove from holder and light turns on. Batteries included.

\$4

MAP OUT YOUR VACATION--1990 Rand McNally Road Atlas has up-to-date changes. Includes \$7 in coupons, \$1 mail-in rebate. \$7.95 value.

\$4.75

SAFETY FIRST--Travel and camping season is here. Don't get caught without a "Fast Aid" first aid kit.

\$3.50