

# Weoma Club NEWS

September 12, 1990

NEXT TUESDAY...  
it's the

*United Way/CHAD*

**CHAUTAUQUA**

presented by AT&T  
starring your  
fellow employees



Go to the attic and dig out  
some turn-of-the-century  
clothing and be right in style

## Everything's "Go" for Corporate Cup Run

The 1990 10th Annual Corporate Run is almost here. The run starts at the Civic Auditorium at 8:15 a.m., Sunday, September 16.

Packet pick-up times are as follows: Sept. 13 & 14, 7:30 to 8:30 a.m., 11:00 a.m. to 12:30 p.m. and 3:00 p.m. to 4:00 p.m. in the Main Cafeteria. If you cannot pick up your packet at these times you may pick up your packet at the Civic Auditorium at the AT&T booth before the run.

For the first-time participants, your packet will include your t-shirt, race number (be sure to wear it the day of the run so that your time will be scored), a map of the race course and pins. Those of you who purchased Pleasure Pacs or Happenings books will find them included in your race packet.

Please remember to join the other AT&T participants for refreshments after you cross the finish line. Also, be sure to turn in your ticket at the Lung Association booth and pick up your Corporate Cup mug.

If you have any questions please call Judy Stroy, extension 3666.

## Six-Irons Win Elmwood League

The Six-Irons of the Weoma Club Wednesday Elmwood golf league are the champions for 1990. They finished the season six points ahead of second place Togeys.

Led by the team captain, Tony David, the Six-Irons have now won the league for an unprecedented third consecutive time.

Team members are: Frank Berrent, Jr.; John Bricko; Bill Chafin; Bob Drach; George House, Fred Mihavetz; Chuck Woltz and George Wooden.

## Toastmasters Meeting

The AT&T Toastmasters will meet Thursday, Sept. 13, 4:05 p.m. in the Pioneer Meeting Room. The area speech contest winner will be selected. Speakers will be Fran Gill, Jerry Golmanavich and Steve Miller.

# Weoma Club Sports

NOTE:  
League Secretaries are asked to turn in score results each week to the Weoma Club.

- Editor

## WEOMA CLUB WEDNESDAY ELMWOOD GOLF LEAGUE

### FINAL STANDINGS

	PTS.
SIX-IRONS	98
TOGEYS	92
BALL BANGERS	86
SOD SQUAD	84 1/2
XXXX-OUTS	83 1/2
SHOP PROS	79 1/2
TRADE WINS	67 1/2
THE BOYS CLUB	49
LOW NET- Larry Anderson (29), Steve Pokorski (29), Wayne Anderson (32).	
LOW GROSS- Gordie Viner (35), D. Hotchkiss (43), T. Johnson (43), Bill Peters (43), Gary Reimers (43).	
BIRDIES- F. Berrent (#3), Chuck Woltz (#2), Larry Anderson (#6), Steve Kush (#6), Al Light (#8), Steve Pokorski (#3, #6), Tom Rickard (#8), Wayne Fiedler (#12), Dick Runnels (#3), Dave Burrell (#8), Dave Halverson (#16).	
EAGLE- Steve Pokorski (#1).	

## Bowling

### WORKS SERVICE LEAGUE

#### STANDINGS

	PTS.	STANDINGS	WON	LOST
YANK ME CRANK ME			7	0
COHEN & KELLYS			5	2
OMALO'S			5	2
W.E.R.M. ENTERPRISES			5	2
BROADWAY BOWL			5	2
T.L.A.			5	2
THE NEW COTTNER STREET			5	2
SABRES			4	3
JUST IN TIME			3	4
TOP GUN III			2	5
JESTERS			2	5
WESTERN BOWL			2	5
JETS			2	5
STRETCH MARKS			2	5
HIGGINS TROPHIES			2	5
TEAM 16			0	7
HIGH GAMES, SERIES- Bob George (245-635), Fred Tirschman (584), Darrell Seaton (229-573), Tim Ward (569), Frank Bogatz (566), Archer Witherell (564), Brian Seaton (563), Al Pickering (218-556), Richard Novak (553), Chet Sears (216), Ken Mass (215).				

## Golf

### WEOMA CLUB MONDAY WESTWOOD HEIGHTS MIXED

#### STANDINGS

	PTS.
PARBUSTERS	100
SWINGERS	92
CHOKERS	92
T TOPPERS	90 1/2
STICKS & CHICKS	89
WESTWOOD HO'S	86
SIX SHOOTERS	85
GEMS	75
TENTH TEE	74 1/2
FOUR STROKERS	66
LOW NET- Helen Barnes (26), Mike Mac Vittie (26)	
LOW GROSS- Phyllis Kemp (40), Pete Loth (35)	

# WOMENS GOLF OUTING

WHEN: Saturday, September 15, 1990  
WHERE: Eagle Run Golf Course (132nd & Maple)  
TEE TIME: Promptly - 7:30 A.M. Shot Gun

### BANQUET

WHEN: After Golfing - approximately 11:00 A.M.  
WHERE: Eagle Run Club House  
FOOD: Croissant, potatoe salad, chips, relish tray, and large drink (pop or ice tea).  
GOLF/LUNCH: Golf - \$6.50 Lunch - \$5.50  
Coffee & Roll - \$1.25

CARTS: \$7.35 each cart.  
Please indicate if you will rent a cart, it will be reserved for you and you are responsible for paying for your cart when you arrive at the golf course.

Please return along with your money to Bonnie by 9/12/90, phone X3589, Department 597-4.

Name \_\_\_\_\_  
Name of Guest \_\_\_\_\_  
Would like to golf with \_\_\_\_\_  
Would like a Golf Cart: Yes ( ) No ( ) \_\_\_\_\_  
Will be sharing cart with \_\_\_\_\_

Golf \$6.50 \_\_\_\_\_  
Cart 7.35 \_\_\_\_\_  
Coffee & Rolls 1.25 \_\_\_\_\_  
Lunch 5.50 \_\_\_\_\_  
TOTAL \_\_\_\_\_

\_\_\_\_\_ Chicken Salad  
\_\_\_\_\_ Club



# WALKERS...

## WHY WEAR SEAT BELTS?

Read your September Safety Awareness Fact Sheet now available at the factory entrances and find out! If you read the important information on the sheet, you're sure to know the answer when asked the week's Safety Awareness Contest question!



## Safety Trivia

by  
*Shirley*

### POP QUIZ:

1. If a fire breaks out at home, the first thing to do is: (a) collect your valuables, (b) try to put out the fire, (c) get everyone out of the house, or (d) call the fire department.
2. Counting sheep helps you fall asleep at night.
3. Bounce your Christmas tree off the ground a couple of times before you decide to purchase it. True or false?
4. Spiders have scared people since the day one of them sat down next to Little Miss Muffed. How many species of spiders are poisonous to humans? (a) 2, (b) 10, (c) 75, (d) none.
5. Thumb-sucking ruins a baby's teeth. True or false?

### Answers:

1. (c) Get everyone out! Fire spreads fast, so don't stop for anything except to help someone get out. Call the fire department only after everyone is safe.
2. True. This traditional remedy isn't guaranteed. Any relaxing thoughts that require little effort and concentration may help ease your mind, forget your worries and relieve the tension that causes much sleeplessness.
3. True. The bounce test will determine if a tree's too dry. If a lot of needles fall off, it's too dry to be fire safe. Look for another tree.
4. Although it is true that all spiders possess poison glands, only the brown recluse spider and the black widow are poisonous to humans.
5. False. The American Dental Association says that sucking is one of the baby's natural reflexes. Thumb-sucking usually decreases after age 2 and may only create problems with normal development if the activity continues past age 4.

The Total Life Concept Program will again be promoting a walking program this fall called "Walkin Works II". The program will begin September 24, 1990 and continue through November 30.

The goal of the program is to promote walking throughout the winter months. It is easy as cold weather approaches to abandon exercise habits practiced during the spring, summer and fall. Don't give up your program and if you're not involved in a program maybe now is the time to begin.

Participants can earn points by participating in any aerobic activities during their lunch hours, before or after work, at home on weekends, vacations, etc. This year we are going to add all of the participants miles together each week and advance a single peg across a map of the United States.

The goal of the program is to log enough actual miles collectively to walk across the United States and back. Miles will be logged for the group throughout the 10 week program. It will be most interesting to see how many total miles are actually logged by the participants. This mileage will be posted each week.

A \$5.00 membership fee will officially enroll you in the "WALKIN' WORKS" program. All funds collected will be used to purchase incentive prizes for participants.

To sign up, please return the form below to the TLC Department, ATTN: Janice Spethman. If you have questions please call extension 4920.

NAME \_\_\_\_\_

DEPARTMENT \_\_\_\_\_

EXT. \_\_\_\_\_

SHIFT (Circle):    1       2       3

T-SHIRT SIZE (Circle) : SM    MED    L    XL

I have enclosed my \$5.00 registration fee. Yes

NO

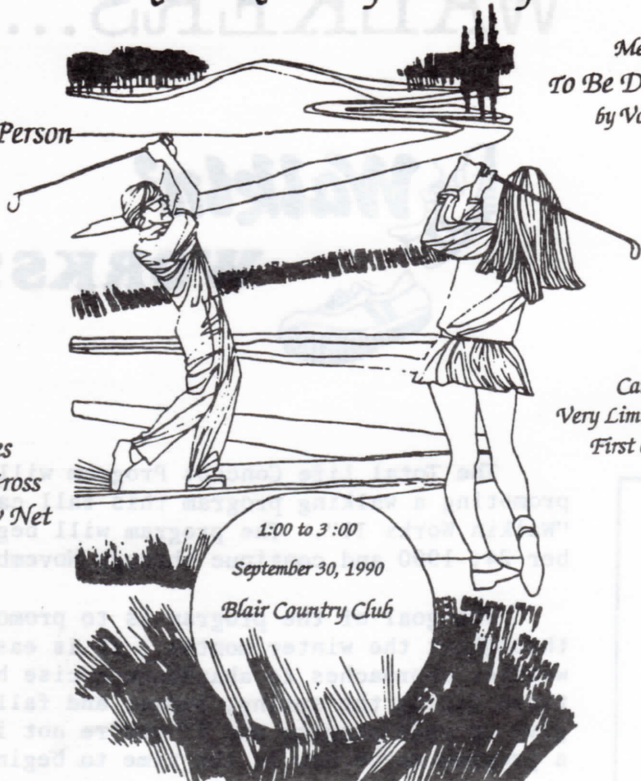
# A T & T Mixed League Outing

Cost:  
\$15.00 Per Person

Meal:  
To Be Determined  
by Vote

Prizes:  
Flag Prizes  
Door Prizes  
Low Gross  
Low Net

Carts:  
Very Limited -  
First Come Basis



1:00 to 3:00  
September 30, 1990  
Blair Country Club

Reservations & Money Due By Sept. 21

Please Contact Don Morris at Ext. 3611 or Wally Lenczowski at Ext. 3019

# POCKET

# SOME BIG SAVINGS!

TICKETS FOR WORLDS OF FUN/  
OCEANS OF FUN, SILVER DOLLAR  
CITY AND ADVENTURELAND WILL  
STILL BE AVAILABLE THROUGH  
SEPTEMBER AND EARLY OCTOBER.  
EMPLOYEES SHOULD CONTACT  
CLARA HENDRICKS, X3617 OR  
MARTI LENZ, X7791.



TICKET PRICES AS FOLLOWS:

SINGLE DAY - WORLDS OF FUN  
\$12.95

SILVER DOLLAR CITY  
(2-DAY ADMISSION)  
ADULT - \$16. - CHILD - \$8.

ADVENTURELAND  
ADULT & CHILD - \$12.50



Amusement Park, Inn, & Campground - I-80 & Hwy. 65 - Des Moines, IA



# United Way CHAD

It brings out the best in all of us.

# Classified Ads

Advertisements must be submitted to the Weoma Club office absolutely no later than 7 a.m. on Wednesdays for the following weeks' issue.

## For Sale

### Musical

3/4" NAGOYA SUZUKI VIOLIN: 334-8075.

### Home Entertainment

POOL TABLE: slate top, \$150. 733-0243 after 4 p.m. week days or all day on week ends.

### Home Furnishings

BEDROOM SET: Girl's Youth, desk, chair, 4 drawer dresser, 4 posted bed, mattress & box springs, \$300. 393-8625.

WATER BED: Queen size, like new \$200 or best offer. 493-3874 anytime.

WATER BED: Queen size, 80% waveless mattress, heater, padded side rails, \$75. 731-0870.

TABLE & CHAIRS: seven piece, solid oak. 253-2127 after 5:30 p.m., ask for Debbie.

### Appliances

WARDS REFRIGERATOR: 17 cu ft, approx 5 yrs old, harvest gold color, \$250. 731-0870.

WHIRLPOOL DISHWASHER: 4 1/2 yrs old, needs new seals, \$20. 895-6482.

### Lawn & Garden

GAS MOWER: Lawn Boy, \$75. 322-6128.

### Parts & Accessories

FIBERGLASS TOPPER: for full size pickup with 8' bed, \$250. 331-6023.

### Tires

TIRE & WHEEL: 16.5, good shape. 331-5691.

TIRES: 4 Uniroyal Fastrack, 185-80 R13, white wall radials, \$10 each or \$30 for all four. 330-4647.

### Vehicles

1977 MONTE CARLO: \$300. 339-8755 after 5 p.m.

### Miscellaneous

BIKES: (2) Men's 10 speed, \$25 and \$45. 339-2688.

DOG HOUSE: large insulated, with removeable roof, \$20. 895-0503 after 5 p.m.

TYPEWRITER: IBM Selectronic electric, COKE MACHINE: 1950's, chest style, OFFICE DESK: steel, 50 x 30, 6 drawers, glass cover, \$200. 572-8957.

## WEOMA WANT ADS WORK!

# +BLOODMOBILE

*The*  
**BLOODMOBILE**  
WILL BE HERE

THURSDAY, SEPTEMBER 20th

12:00 - 5:00 PM

FRIDAY, SEPTEMBER 21st

6:00AM - 10:00AM



## Tribute to Blood Donors

A blood donor is good for people who go through windshields and red lights. For somebody with leukemia.

For people being operated on. For barefoot kids who aren't careful. For people who are into feudin' and fightin'. For hemophiliacs and daredevils.

For people undergoing dialysis while waiting for a kidney transplant. For people who fool around with guns. For little kids who manage to uncup a bottle of something poisonous.

A blood donor is good for people who have been badly burned. For new mothers who need transfusions. For new babies who need a complete change of blood supply.

For people having open-heart surgery. For cancer patients. For people with severe hepatitis and anemia. For kids who fall out of trees or whatever.

For anybody any age with bleeding ulcers. For people who were in the wrong place at the wrong time.

A blood donor is good for people who are in a lot worse shape than most people you know.

A blood donor is good for life.

# The Pioneer Porch

## SWEAT SHIRTS

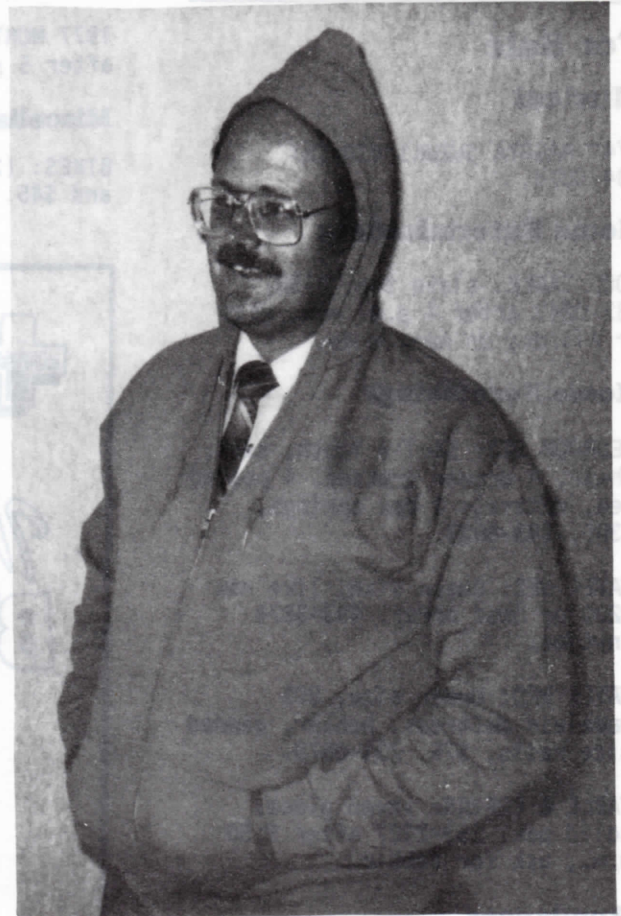
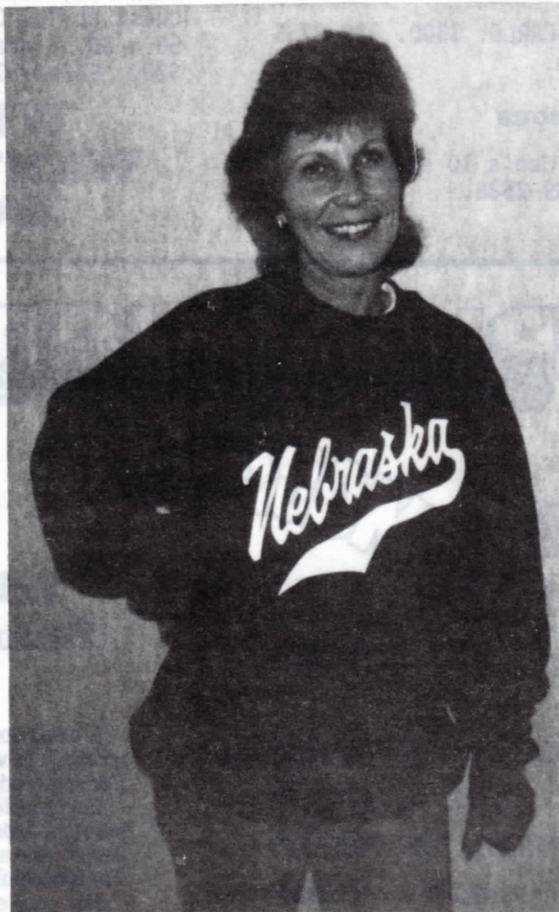
(HOODED OR NOT)

### UMBRELLAS



Golf/Sports Umbrella. Multi-colored panel combos. 42" diameter spread.

**\$10**



DON'T LET THIS RECENT HEAT WAVE FOOL YA... IT'S GONNA GET COLD OUTSIDE AND MARY ANN VONDRA AND BILL PETERS ARE READY!

MARY ANN'S STYLE SWEATSHIRT COMES IN RED AND WHITE, SIZES S M L XL (\$16) and XL TALL (\$17).

THE HOODED SWEATSHIRTS ZIP UP THE FRONT AND ARE BLUE IN COLOR. SIZES S M L XL. ONLY \$18.

### STORE HOURS

#### MONDAY

7:30 - 8:30 a.m.  
10:30 a.m. - 12:30 p.m.  
3:00 - 4:00 p.m.

#### WEDNESDAY

7:30 - 8:30 a.m.  
10:30 a.m. - 12:30 p.m.  
3:00 - 4:00 p.m.

#### THURSDAY

10:30 a.m. - 12:30 p.m.  
7:00 - 8:30 p.m.

#### FRIDAY

3:30 - 5:00 a.m.  
7:30 - 8:30 a.m.  
10:30 a.m. - 12:30 p.m.  
3:00 - 4:00 p.m.

**GAM** The ORIGINAL 6 IN 1 \$5.50

COMBINATION HAMMER and SCREW DRIVER

MADE IN U.S.A.

ONLY THE ORIGINAL HAS THIS NAME GAM

Solid Brass Handles — Hardened Steel Blades . . . RUST RESISTANT