

Corps asks that only workable or new toys be contributed. Cash contributions cannot be accepted.

The Marine Corps Reserve Toys for Tots program is operating in 46 states and 45 million toys have been collected and distributed since it started. The program began in 1947 when a group of Marine Corps officers in Los Angeles noted a lack of coordination in collecting and distributing Christmas toys. They decided that military organizational knowledge could be applied to this task.

Last year Omaha Works employees contributed 3,000 of the 14,000 toys collected in the Greater Omaha area by the local Marine Corps Reserve. The toys were turned over to the Goodfellows Organization of Omaha and distributed to over 6,000 needy children.

This year's program began in Omaha with a proclamation by Mayor A. V. Sorensen declaring December 4 through December 22 as "Toys for Tots" days.



REMEMBER TOYS FOR TOTS program when you shop in the toy department. That's the reminder that these Toys for Tots committee members offer to their fellow employees. From left: Last year's chairman Dan Dormer (423), this year's chairman, Norb Goeser (112) and Harriet McIntosh (441).

ACCOUNTING JOBS OPENING HERE

Do you have a friend or relative who would be interested in accounting work at the Omaha Works? Does he — or she — have three or more years of college, including accounting courses, or related job experience?

If so, have him contact Carol Judds in the employment office. Maybe you can get them together?

Name of Game Is Communication

Communication, an inseparable part of the first impression that people make on others, is the "name of the game" at the meetings of Omaha Works Toastmasters.

The Toastmasters' door is wide open and the welcome mat for new members is out. John Slama, extension 3251, will be glad to answer any questions.

WE First Nine Months Ahead of 1966 Three Percent Ahead of 1966

Western Electric sales for the first nine months of 1967 were \$2.7 billion, an increase of three percent (\$70 million) over the similar period in 1966. Net income for the same period was \$103 million compared with \$128.5 million for 1966.

The decrease of \$25.5 million in net income is reflected in a significant reduction in rate of

return on investment. The figures are 7.8 percent for the nine months ending September 1967, and 9.9 percent for the same period in 1966.

Some improvement in rate of return is expected in the fourth quarter due to the price increase that was effective October 1. This increase was necessary because of continued upward pressures of wages and

material costs. These pressures more than offset substantial operating economies the company had realized up to that point. The price increase, while varying among product lines, will have an overall effect of 2.9 percent.

It is anticipated that sales for 1967 will exceed last year's levels.

MISS WEOMA Jan Schliefert at Burke Stadium, home of the Burke High School Bulldogs. The old football field analogy can come up even when talking about expense supplies.

Prudent Use of Expense Supplies Aids Our Business

From October 3, 1966 to August 15, 1967 we used 2.5 million staples at the Omaha Works. Many things are expressed in millions now-a-days, but few of us realize just what a million of anything might look like.

We took a strip of staples from the box, measured off an inch and painstakingly counted the staples in that inch. There are about 50. Continuing with the help of seventh grade arithmetic we found that if all the strips of staples used at the Omaha Works during the ten month period were placed end to end we would have a continuous strip of staples more than 1,300 yards long. That makes the hackneyed football field analogy irresistible and inevitable.

Anyway, 2.5 million is a lot of staples and the cost amounts to a fairly good size piece of change, but we are not saying that everyone should think twice before using a staple. All we are trying to do is emphasize the fact that many little things can add up.

That's something worth remembering when using other items in the general category of expense supplies. Gloves, wire cutters, drills, scissors, masking tape, tablets, ball point pens, manilla folders, erasers and ring binders are some of the many items that we use in great quantities at the Omaha Works. The cost of

these runs into thousands of dollars each year and it is good business to use them resourcefully.

Waste and improper use of these expense items really adds up and creates an unnecessary burden on our total operation.

Nilson Named Chamber Vice President

Omaha Works General Manager Howard Nilson was elected a vice president of the Omaha Chamber of Commerce by the board of directors November 13. As vice president he is a member of the executive committee of the Chamber and a director. The one year term begins January 1, 1968.

The administrative council of the Chamber will be under Nilson's direction in his new capacity. It includes membership and finance, public relations, public affairs, area relations, program of work development, the Junior Chamber and the women's division of the Chamber.

Also recently, Nilson was made vice president of Immanuel, Inc. (Immanuel Hospital) and vice chairman of Immanuel Board of Trustees.

PIONEER NOTES

By Bob Kukielski



Jolly Green Giant Tops Masqueraders

The Pioneer fall dinner dance with a Masquerade theme was well received by the members. The many and varied costumes added a colorful accent to the occasion topped by Karl Vilwoc's version of the Jolly Green Giant. Joe Sinkule and his boys provided the dance music.

Forty-Four Complete Drivers Training

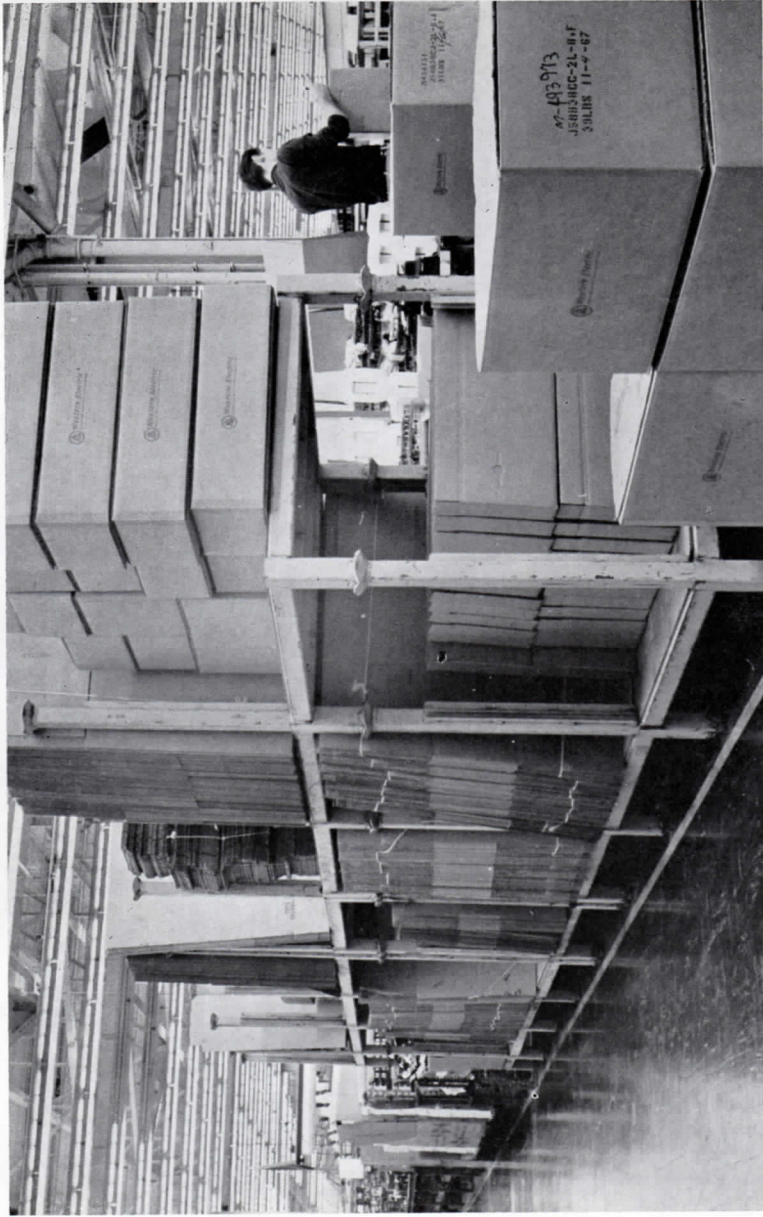
Two Defensive Driving Training classes sponsored by our Pioneer Council, recently concluded with enthusiastic participation of 44 Pioneers and their families. Separate classes were held in Lincoln and Omaha to provide coverage to our widely dispersed membership. Participants included: Winifred Fuller, John Ivey, Keith Ivey, Mr. & Mrs. Bob Carlson, Harold Hoepfner, Stephen Taylor, Arzilla Ray, Mr. & Mrs. Orval Galbreath, Mr. & Mrs. Gordon Hein, Mr. & Mrs. Oscar Barnett, Ray Graham, Mr. & Mrs. Ward Taylor (Lincoln). The Omaha group included Richard Dunlap, Charles Koukal, Jack Rusthoven, Pete Crostarky, Mr. & Mrs. John Bundy, Mr. & Mrs. Carl Dunham, Mr. & Mrs. Larry Lyons, Mrs. Nell Nelson, Mr. & Mrs. Vene Rinehart, Bob Morey, Ralph Filter, Mrs. Dave Hansen, Mr. & Mrs. Fred Braun, Fred Miller, Donald Walker. Instructors were: Charles Muehlhausen, Ed. Gembica and Len Branecki.

Planning for the Future Seminar Successful

The November, 1967, issue of *Changing Times*, The Kiplinger Magazine, featured an article entitled "How to be Happy Though Retired." Highlighted in the article was the Pioneer's role in this area both before and after an employee retires. Specifically mentioned were the "Planning for the Future" seminars conducted by the various councils throughout the country.



Good Housekeeping Area of The Month



IT'S NEAT, IT'S ORDERLY, it's the good housekeeping area of the month. Only one employee happens to appear in this picture, but the work in the PBX non-x unit packing area of Department 454 is not a one man job. Neither is the housekeeping a one man job. Every employee in the area makes housekeeping a part of the job.

Two Omaha Works Men Win Bridge Tournery Events

Two Omaha Works men gave a good account of themselves in the 14th Annual Mid American and Canadian Bridge Tournament held in Omaha, November 1-5. The event attracted nearly 1,000 bridge players from all parts of the U. S. and Canada.

Bill Schleusener (721) annexed the masters pair championship.



SERVICE ANNIVERSARIES

20 Years	15 Years	10 Years
Cerjan, Rudolph F.	Herzog, Erwin G.	Burkman, Altamae C.
251	437	324
Dec. 25	Dec. 25	Dec. 2
	Cannon, Darrell D.	Hermes, Arminta C.
	252	422
	Dec. 7	Dec. 2
		Krupicka, Robert E.
		245
		Dec. 4
		Vacanti, Anthony C.
		245
		Dec. 4
		Theede, Michael M.
		453
		Dec. 4
		Jonderko, Herbert M.
		246
		Dec. 9
		Lamb, Roby D.
		423
		Dec. 9
		Syslo, Charles C.
		241
		Dec. 9
		Jans, Sylvan H.
		246
		Dec. 10
		Schmidt, Charles S.
		443
		Dec. 16
		D'Agosta, Marilyn J.
		429
		Dec. 18
		Barrett, Francis X.
		266
		Dec. 23
		Lawler, Philip E.
		742
		Dec. 23

MORE OBSCENE CALLERS ARRESTED, CONVICTED

The Bell System drive against abusive and obscene telephone callers is paying off.

men will bridge

Tourney Events

Two Omaha Works men gave a good account of themselves in the 14th Annual Mid American and Canadian Bridge Tournament held in Omaha, November 1-5. The event attracted nearly 1,000 bridge players from all parts of the U. S. and Canada.

Bill Schleusener (721) annexed the masters pair championship on the first day of the tourney and then, with John Nelson (264) as a partner, captured the team of four on the last day.

The masters pair is limited to players holding an American contract bridge league ranking of national master or better. Bill and his partner, Norm Abrahamson of Omaha, got off to a slow start, but came on strong in the second half to top the field of 150 pairs competing for the title.

Schleusener and Nelson teamed with Jim Smith of Omaha and Mrs Alice Mitchell of San Clemente, California scored early and heavily to lead all the way in winning the team championship at the tourney. They nosed out the top seeded team by half a point in the finals.

At Work,
At Home,
On The Road
**REMEMBER
SAFETY**

linger Magazine, featured an article entitled "How to be Happy Though Retired." Highlighted in the article was the Pioneer's role in this area both before and after an employee retires. Specifically mentioned were the "Planning for the Future" seminars conducted by the various councils throughout the country.



Our local Council recently completed this type of seminar. One Hundred Fifty Nine members and friends attended five night sessions covering subjects of interest to retired people. Included in the list of speakers were M. R. Mulligan, and Dr. Barry Storter from Western Electric; D. Prouty from the Social Security Administration; D. Lane from Merrill, Lynch, Pierce, Fenner and Smith; H. Naederhiser, from Phoenix Mutual; D. Russell, attorney from the U. S. National Bank; Mrs. A. Dawson, from Roberts Dairy; and R. Wurderman, realtor.

New Pioneers

The following employees joined the Pioneers in November: L. J. Charko (242), R. W. Erickson (244), O. L. Galbreath (443) and F. L. Kriesel (254).

THE WESTERNER
Published monthly for Omaha Works employees.

Volume 11
Number 11
December, 1967

N. Howard Nilson,
General Manager

Office: Room 122 Area Code 402,334-2000 Extension 3031

Box 14000 West Omaha Station, Omaha, Nebraska 68114
Member International Council of Industrial Editors
and Associated Nebraska Industrial Editors
WESTERN ELECTRIC COMPANY, INC.
OMAHA, NEBRASKA 68114



10 Years

Burkman, Altamae C. 324 Dec. 2
Hermes, Armina C. 422 Dec. 2
Krupicka, Robert E. 245 Dec. 4
Vacanti, Anthony C. 245 Dec. 4
Theede, Michael M. 453 Dec. 4
Jonderko, Herbert M. 246 Dec. 9
Lamb, Roby D. 423 Dec. 9
Syslo, Charles C. 241 Dec. 9
Jans, Sylvan H. 246 Dec. 10
Schmidt, Charles S. 443 Dec. 16
D'Agosta, Marilyn J. 429 Dec. 18
Barrett, Francis X. 266 Dec. 23
Lawler, Philip E. 742 Dec. 23
Casey, George P. 254 Dec. 30
Hunt, LaVern W. 244 Dec. 30

15 Years

Cerjan, Rudolph F. 251 Dec. 25
Herzog, Erwin G. 437 Dec. 25
Cannon, Darrell D. 252 Dec. 7

MORE OBSCENE CALLERS ARRESTED, CONVICTED

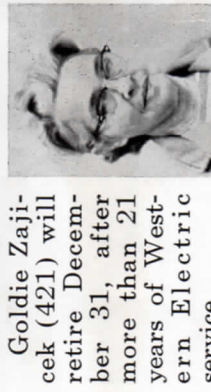
The Bell System drive against abusive and obscene telephone callers is paying off in increased arrests and convictions. The campaign has been backed up by the establishment of annoyance calling bureaus, special training for thousands of telephone employees and the use of a variety of electronic gadgets to trace calls.

The police and the public are working closely with the Bell System. The telephone company collects evidence which determines the telephone line being used to make the offending calls. Then, if the victim chooses to prosecute, the law identifies and apprehends the caller.

In 1963 there were 165 arrests and 110 convictions of annoyance callers in areas where Bell System companies operate. This rose to 273 arrests and 189 convictions in 1964 and 474 arrests and 358 convictions in 1965.

Then, last year, when the System began its campaign to stop such calls, there were 836 arrests and 788 convictions — about a 100 per cent increase over the previous year. In the first half of this year, there have been 389 convictions.

Goldie Zajicek (421) Retires December 31



Goldie Zajicek (421) will retire December 31, after more than 21 years of Western Electric service.

She started at the Company's former Lincoln Shops in September, 1946 as a bench hand and later was assigned to coil winding. Goldie transferred to the Omaha Works in August 1960 as assembler.

She plans to live in Lincoln.

NOT A PRAYER

In Sydney, Australia, a motorist returned to his parked car to find a dented fender and a note on his windshield: "If you want reimbursement, dial 48-0221."

Relieved at the other driver's honesty, he drove home and dialed the number. Said a recorded voice, "Welcome to your Dial-A-Prayer service."

Voters Face Important Issues: Special Election December 12

Conser Serves On Citizens Committee To Inform Electorate

To My Fellow Employees:

I am serving on a citizens committee which is endeavoring to bring some facts to the attention of the voters about propositions to be voted on December 12. All of them have something to do with the quality of life in our city. Some of them will affect your pocketbook and some will not.

I hope that bringing this information to you through a special section of the Westerner will be helpful to you in deciding how to vote on December 12.

The information in this section tells you exactly **where** the money will be spent and **what** it will buy. I'm sure you'll find it interesting.

Rod Conser — 741



The Proposals

On December 12, 1967, in a special election, the citizens of Omaha will be asked to vote on proposals which will appear on six separate ballots, as follows:

- Ballot 1 Merger of the University of Omaha with the University of Nebraska.
- Ballot 2 \$4,000,000 Police and Fire Training Bonds.
- Ballot 3 Charter Amendment Authorizing an Increase in the Tax Levy Millage to Pay for Additional Police Personnel and Equipment.
- Ballot 4 \$4,500,000 Street and Highway Bonds.
- Ballot 5 \$2,650,000 Parks and Recreation Bonds.
- Ballot 6 \$1,500,000 Sewer Bonds.

The chairman of the Citizen's Committee to inform the public about the issues has made the following statements: "Each of the improvements included in these proposals is vital to the future and prosperity of the citizens of Omaha. To obtain a favorable vote, the voter must mark the **YES** box on each ballot. The results are based on a **simple majority of those voting** on the particular proposal."

The Effect on Your Taxes

It is important to note the effect on your taxes as follows:

1. Ballots 2, 4, 5, and 6, **will not result in any increase in taxation.** The reason is that the Bonds to be issued for these ballots will be issued when an approximately equal value of bonds already issued are retired. The city is currently retiring \$3 to \$3.5 million in bonds each year. The issue of the bonds will therefore be distributed over the next three years. Yes, this means we will keep spending our tax money at the same rate we have in recent years.
2. Ballots 1 and 3 are off setting thus causing a **net decrease in taxation** by approximately one-half mill. The reason for this is that Ballot 1 will decrease taxation by two mills and Ballot 3 will increase taxation one and one-half mills.

...a special section of the Westerner will be helpful to you in deciding how to vote on December 12.

The information in this section tells you exactly **where** the money will be spent and **what** it will buy. I'm sure you'll find it interesting.

Rod Conser — 741



It is important to note the effect on your taxes as follows:

1. Ballots 2, 4, 5, and 6, **will not result in any increase in taxation.** The reason is that the Bonds to be issued for these ballots will be issued when an approximately equal value of bonds already issued are retired. The city is currently retiring \$3 to \$3.5 million in bonds each year. The issue of the bonds will therefore be distributed over the next three years. Yes, this means we will keep spending our tax money at the same rate we have in recent years.
2. Ballots 1 and 3 are off setting thus causing a **net decrease in taxation by approximately one-half mill.** The reason for this is that Ballot 1 will decrease taxation by two mills and Ballot 3 will increase taxation one and one-half mills.

WHAT YOU SHOULD KNOW ABOUT EACH BALLOT

Merger of the University of Omaha with the University of Nebraska (BALLOT 1)

1. If approved, the University of Nebraska at Omaha will be effective July 1, 1968.
2. Lower tuition — All Nebraska residents would pay a \$15 per credit hour fee. City residents now pay \$18 and non-city residents paying \$28 per credit hour.
3. The tax levy on property within the Omaha city limits will decrease two mills.
4. The Nebraska Legislature has provided that existing programs at the University of Omaha will be maintained and appropriately developed to meet our growing needs.
5. The State Legislature has already appropriated over \$4 million for the University in the 1968-1969 fiscal year, in event the merger is approved by your vote. This amount would equate to about six mills of taxes for Omaha property owners if they were to provide the funds. \$1 million is for a much needed classroom and office building.
6. The University will receive \$625,000 in Federal funds to add three stories to a new science building.



Police and Fire Training Bonds (BALLOT 2)

1. Police Headquarters to replace old building at 11th and Dodge streets. Built in 1921 for a 264 man police department serving a population of 192,000; the same building today houses a 500 man force and serves a population of 365,000. The building is entirely inadequate for today's law enforcement requirements. Visit it at 101 South 11th street and see for yourself.
2. Fire training facilities — The only training facilities available are a small drill tower at 30th and Hanover built in 1931 now in a residential area with insufficient space to maneuver modern equipment now a part of the force, and a small two-story smoke building on unpaved ground at 13th and Boyd. With these facilities, training can only be done in summer months, weather permitting. Poor drainage at both locations prevents use of large volumes of water. Our fire problems today are more complex because of the use of plastics, exotic chemicals, windowless buildings, etc., and modern fire equipment used to combat these fires.
3. How well firemen are trained has a partial effect on your fire insurance rates. The proposed training school facilities and year round training will enable the Fire Division to comply with the specifications for a modern fire department laid down by the American Insurance Association.

Charter Amendment Additional Police Personnel and Equipment (BALLOT 3)

1. A majority YES vote will amend Omaha's Home Rule Charter to authorize the City Council to increase the appropriation for police personnel and equipment approximately \$1 million annually and to change the tax mill levy limit from sixteen mills to seventeen and one-half mills.
2. The 1966 F.B.I. Uniform Crime Report indicated that in cities over 250,000 population there were 2.7 police department employees per 1,000 population. In Omaha there were 1.4 police department employees per 1,000 population in 1966. Adding 100 policemen to the force would bring the force size to 630; a ratio of 1.7 police department employees per 1,000 population. The police department estimates that 100 men is the maximum number that could be recruited and effectively trained in 1968. The records of the Omaha Police Division for 1966 show a 66% increase in serious crimes over 1960.

The following comments of the Omaha Public Safety Director, Mr. L. K. Smith, are pertinent to the subject:

"An incomprehensible picture has emerged of more and more crime in ever larger cities; police forces, insufficient in size, over-extended and spread thin, attempting to cope with a multitude of serious problems, with little, if any, proportionate increase of police personnel over the past seven years. "When this coupled with the fact of greater sophistication in techniques of the criminal and the necessity of achieving a balance between individual rights of the citizens and the right of society to safety, peace, and order, it is abundantly clear why police professionalization and substantially larger numbers of police

\$2,650,000 Parks and Recreation Bonds (BALLOT 5)

This bond issue provides for more recreation facilities for all areas of Omaha. It anticipates acquisition and development of parks and recreational facilities to benefit Omahans in 100 locations throughout the City.

These funds will give the people of Omaha \$2 of purchasing power for every dollar invested because the Federal Government will add a dollar for every dollar obtained from this bond issue.

The proposed park and recreational improvements provided by these Bond Funds are:

1. A major softball field in Benson Park.
2. Lighted baseball field in Fontenelle Park.
3. Development of recreation facilities on school grounds at 30 schools.
4. Acquisition and development of 50th and "C" park and playground in South Omaha (50% matching funds).
5. Development of Dodge Park — North Omaha, including construction of roads, installation of utilities, excavation of a 25 acre lake, development of picnic grounds, ball field development and bridle trail development. This is a major step in the development of a family park and recreation area.
6. Rebuilding of Hanscom Park Greenhouse — Present greenhouse is in need of major improvements.
7. Purchase of park lands throughout the City with Federal-State matching funds.
8. Construction of pavilion-type outdoor artificial ice skating rink — West Omaha — A community-wide facility.
9. Construction of Community Centers at 37th and "P" — Christie Heights and one other site to be selected.
10. Tennis court construction at Spring Lake Park, Roberts Park, Kountze Park, Pinal Park, and resurfacing of concrete courts at Dewey and Hanscom Parks.
11. Development of new parks at — 84th and Grover (Conoco Park), 95th and Center (West Center Park) and 105th and Hascall (Prairie Lane Park); and improvements for family use at approximately 25 of our present parks throughout the City.
12. 3 new swimming pools — A 50 meter pool at Hitchcock Park in South Omaha, and pools in the Near North Area and in West Omaha.
13. Golf course improvements at Miller, Elmwood, Fontenelle and Spring Lake Parks. Includes water system and improved tees and greens at Elmwood,

size to 630; a ratio of 1.7 police department employees per 1,000 population. The police department estimates that 100 men is the maximum number that can be recruited and effectively trained in 1968. The records of the Omaha Police Division for 1966 show a 66% increase in serious crimes over 1960.

The following comments of the Omaha Public Safety Director, Mr. L. K. Smith, are pertinent to the subject:

"An incomprehensible picture has emerged of more and more crime in ever larger cities; police forces, insufficient in size, over-extended and spread thin, attempting to cope with a multitude of serious problems, with little, if any, proportionate increase of police personnel over the past seven years.

"When this coupled with the fact of greater sophistication in techniques of the criminal and the necessity of achieving a balance between individual rights of the citizens and the right of society to safety, peace, and order, it is abundantly clear why police professionalization and substantially larger numbers of police officers are essential.

"New laws are enacted and existing laws reinterpreted, and the police must constantly adjust to the changing needs of a changing society.

"An inevitable result of manpower deficiency is the lack of crime and accident prevention through a preventive patrol and a continuing in-service training program. Police assignments accumulate and priorities must be assigned on the emergency nature of the occurrence. The response to calls for assistance is slowed and public confidence and support of the police force deteriorates."

Street and Highway Bonds (BALLOT 4)

Passage of this ballot will enable Omaha to obtain substantial State and Federal matching funds to provide for street and freeway construction programs in all parts of the City.

The planned projects are:

Abbot Drive — from Florence Boulevard and Read Street to 20th Street East and Carter Boulevard.

Ames Avenue — from 52nd to 40th Street construction to four lanes. This will extend the recently completed 72nd to 52nd Street projects on to 40th which will provide four lanes all the way to Florence Boulevard.

Jackson — from 15th to 17th Street.

Pacific — from 74th to 96th right-of-way acquisition for four lane construction.

A sanitary and improvement district is now preparing to construct a four lane roadway from 96th Street to Interstate 680 in 1969.

60th — construction from North West Radial to Ames Avenue.

84th — construction from Interstate 80 to West Center Road for four lane roadway.

28th and Dodge — interchange to provide for construction of the connection of Interstate 480 interchange with the North Freeway and West Freeway.

North Freeway — construction from California Street to Hamilton Street.

West Freeway — construction from 30th to 31st Streets.

Miscellaneous Street Improvements — include intersection widening, pedestrian overpasses and a variety of small constructions on major streets to provide temporary improvement in traffic movement and traffic safety until major construction projects can be completed.

and one other site to be selected.

10. Tennis court construction at Spring Lake Park, Roberts Park, Kountze Park, Pipal Park, and resurfacing of concrete courts at Dewey and Hanscom Parks.

11. Development of new parks at — 84th and Grover (Conoco Park), 95th and Center (West Center Park) and 105th and Hascall (Prairie Lane Park); and improvements for family use at approximately 25 of our present parks throughout the City.

12. 3 new swimming pools — A 50 meter pool at Hitchcock Park in South Omaha, and pools in the Near North Area and in West Omaha.

13. Golf course improvements at Miller, Elmwood, Fontenelle and Spring Lake Parks. Includes water system and improved tees and greens at Elmwood, new greens and general improvements at Miller, Fontenelle and Spring Lake Park. Improving parking facilities at Benson Park.

14. Construction of City-wide Garden Center available to all citizens at a location to be selected.

This is the first major park acquisition, improvement and development program for Omaha in many years.

\$1,500,000 Sewer Bonds (BALLOT 6)

These bonds will finance storm and flood relief sewer programs which were classified as urgent as long ago as 1952.

The 1968 sewer program would benefit all areas of the city, eliminating chronic backup problems, and basement and street flooding. These sewer projects are included in the \$1,500,000 1968 program:

17th and Ames Avenue — flood relief sewer for an area generally bounded by 16th Street, 20th Street, Ames Avenue, and Fort Street.

26th and "Y" Street — to 30th Street and Upland Parkway flood relief sewer.

Fort Street — flood relief sewer, 24th to 27th Streets.

Storm sewer east of 90th Street — between Blondo and Cass. Without sewers, streets in this area cannot be paved.

Deer Park Boulevard — I 80 area sewers. A sanitary and storm sewer has been constructed from Deer Park Boulevard to the Missouri River, and will be connected to existing sanitary sewers as well as new sanitary sewers after the storm and sanitary sewers are separated. This will be the first major sewer separation completed in Omaha. The city share is estimated at less than 50% of the cost.

Storm sewers — for paving and flood control. For work in advance of special assessment street construction.

Focus—W.E. People



NOLAN leading marksman.

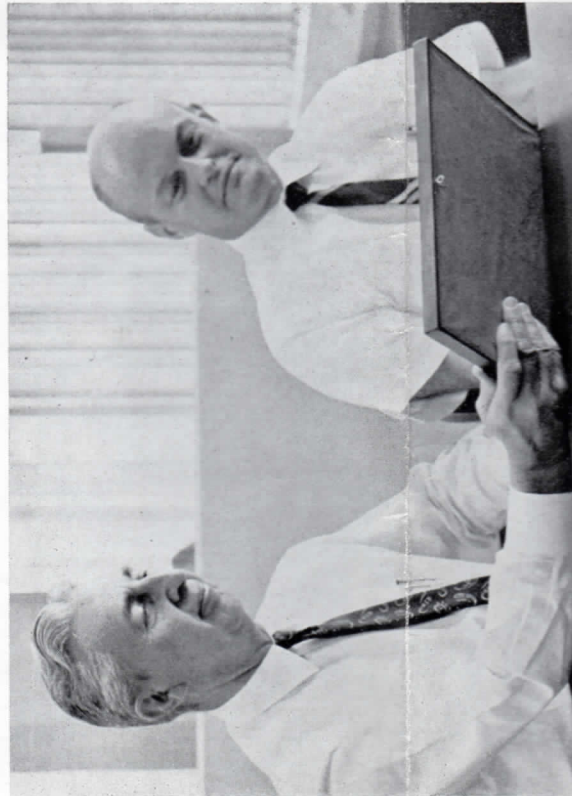
TWO OMAHA WORKS men were recognized recently for their service to Scouting by their respective districts. The Frontier District presented its District Award of Merit to Russ Burton (734) and the Trailblazer District made a similar award to Lynn Wenstrand (722) . . . below.

Nolan Leads Nation In Two Rifle Events

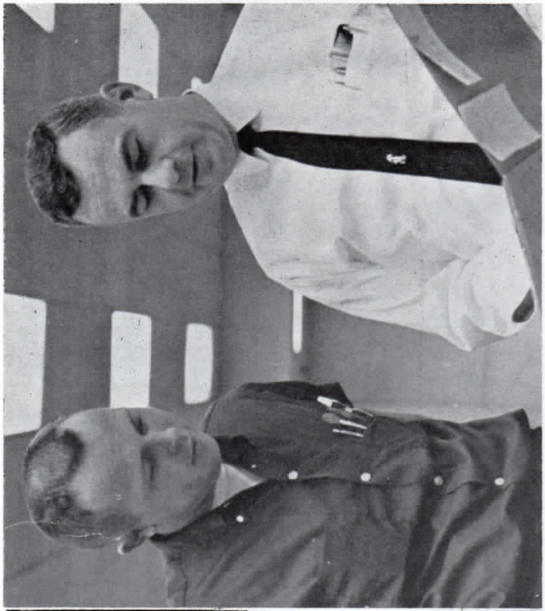
Page Nolan (254) was recognized by the National Rifle Association several weeks ago for setting two new national records at a registered high power rifle tournament held at Louisville, Nebraska on September 16 and 17.

The events in which the Omaha Works marksmen leads the nation are the 200 yard national match aggregate course and 20 shots, prone, slow fire at 200 yards with metallic sights.

Page says that records like this may stand a day, month, year or ten years—until someone else does better in a registered tournament. Meanwhile, the Omaha Works man is the nation's best in the two events.



PAUL DIEDERICH received his half of a \$465 joint award from Manager Charlie Higginson.



"RALPH, YOU HAVE a winner." Director of Engineering and Manufacture Virgal Schad presents \$405 to Ralph Gable.

Suggestion Awards — Three Ideas Earn \$1185

Paul Diederich and Ernest Howard (both 452) led recent suggesters with a joint award of \$465. They presented an idea that eliminated the need for certain diodes and terminal posts on the 757 PBX.

Ralph Gable (453) received the next highest award of \$405 for proposing that the spacing of "O" cabinet stitches be changed in the 757-A PBX. Ernie Wesolowski received \$315 for suggesting that every other stitch shown on the drawing for the 757 PBX unit cable be eliminated.

Other awards:

\$20 — R. F. Hall (253), M. W. Anderson & R. E. Hall, Joint, (253), L. A. Krysl (257), L. D. Doeden (252), J. E. O'Donnell (257), L. B. Domina (257).

\$15 — H. A. Anderson, Jr. & R. D. Anderson, Joint, (252), B. W. Schwainger (441), O. A. Knutson (441), Mrs. P. R. Malik (423), D.



ERNIE WESOLOWSKI'S idea earns \$315 presented by Virgal Schad.

M. Honeyman (2), (422), Mrs. B. T. O'Bradovich (434), R. F. Cooper (452), J. D. Walters (252), F. W. Byers (452), G. L. Stott (2), (443), Mrs. D. S. Triplett (434), L. F. Hunt (266), Mrs. Elaine Cefrey (242).



Students Who's Who Lists Jeanne Hoheisel



Jeanne Hoheisel, daughter of John (453) and Ruth (429) Hoheisel was recently named to "Who's Who Among Students in American Universities and Colleges." Selection is based upon scholarship, participation and leadership in academic and extra-curricular activities, citizenship, service to the college and promise of future usefulness.

The Tarkio College senior has a cumulative grade point average of 3.42 out of a possible 4 and her name has been on the Dean's list consistently. She has been on the cheerleading squad for three years and is currently captain of the squad. A member of Lambda Sigma Tau sorority and Students National Education Association, Jeanne was student council secretary last year, attendant for last spring's formal and junior homecoming court attendant. She is majoring in education and Spanish and plans to teach Spanish. Her minor subjects are English and psychology. At the present time Jeanne is student teaching in Council Bluffs.

Jeanne's sister is Jonnie Hillmer (6354).

NO JOB IS SO IMPORTANT AND NO SERVICE IS SO URGENT THAT WE CANNOT TAKE TIME TO PERFORM OUR WORK SAFELY

the 757-A PBX. Ernie Wesolowski received \$315 for suggesting that every other stitch shown on the drawing for the 757 PBX unit cable be eliminated.

Other awards:

\$20 — R. E. Hall (253), M. W. Anderson & R. E. Hall, Joint, (253), L. A. Krysl (257), L. D. Doeden (252), J. E. O'Donnell (257), L. B. Domina (257).

\$15 — H. A. Anderson, Jr. & R. D. Anderson, Joint, (252), B. W. Schwainger (441), O. A. Knutson (441), Mrs. P. R. Malik (423), D.



ERNIE WESOLOWSKI'S idea earns \$315 presented by Virgal Schad.

M. Honeyman (2), (422), Mrs. B. T. O'Bradvich (434), R. F. Cooper (452), J. D. Walters (252), F. W. Byers (452), G. L. Stott (2), (443), Mrs. D. S. Triplett (434), L. F. Hunt (266), Mrs. Elaine Cefrey (242).

The FCC Decision:

WHAT, HOW MUCH AND WHEN

base and rate of return.

The original order had disallowed from the rate base \$742 million of Bell System interstate investment in plant under construction, cash working capital and material and supplies. Return on this investment was limited to interest during construction and earnings on temporary cash investments. On reconsideration, the FCC allowed a full return on \$544 million for plant under construction, the largest of the three rate base items it had earlier disallowed.

Rate of Return

The rate of return is the percentage rate applied to the rate base to determine the earnings the Commission feels the company should be permitted to earn. AT&T's witnesses, some of the nation's most respected authorities, testified that the Bell System needed a rate of return between 7.5 and 8.5 per cent on all of its interstate investment. They stressed that the relatively wide range between these upper and lower limits would serve as an incentive to improve efficiency.

In the original order, the FCC decided that earnings between 7 and 7.5 per cent were enough but

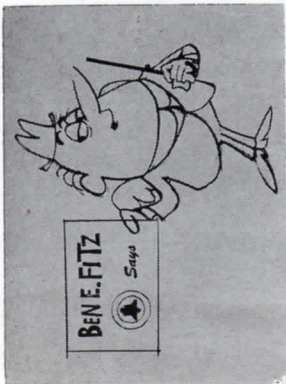
failed to make clear how rigidly these limits would be applied. The second order went to considerable lengths to make clear that these limits would not be regarded as a rigid floor or ceiling for earnings but would be reevaluated in the light of all existing conditions whenever earnings went past these limits.

Total Effect

Taken together, the FCC's positions on rate base and rate of return, as spelled out in the September 14 order, suggest that the Commission will allow the Bell System to improve earnings above the range found in the Commission's order by doing a better job more efficiently.

AT&T called the changes "most welcome." Although the company said it was "concerned" at the size of the rate reduction, it concluded:

"Over recent years, however, we have been able to maintain good earnings and improve service and reduce rates at the same time. We believe the FCC's clarification of its interim order opens the way for a continuation of this performance and provides our business the opportunity to move vigorously ahead in service to the public."



Group Life Insurance —A Big Bargain

"I think I have enough insurance already. It's not going to do me much good to have any more."

This and similar remarks are heard frequently in the Benefit Office. It usually is said by those who haven't read the booklets presented to them regarding the Company's Group Life Insurance Program, both Basic and Supplementary. After a brief explanation that clears up doubts and misunderstandings, this comment very often is changed noticeably.

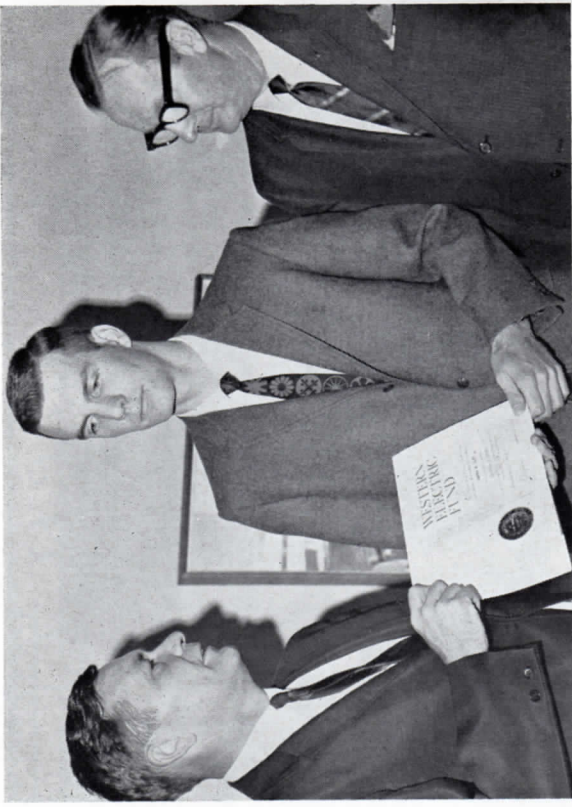
If you neglected to enroll when first eligible (upon attaining six months service with the Company you still may do so. Don't delay, because it isn't very sensible to cause anyone concern and perhaps serious financial troubles when this coverage is available at very low cost (40 cents a month

for each \$1000 after the first \$2000, which is paid for by the Company, for Basic Insurance, and 20 cents per month per \$1000 for Supplementary up to age 45, and 70 cents thereafter until the Supplementary coverage ceases at age 60.) It's a cinch that any doubts about the merits of the Program would be quickly dispelled if the comments of the fifty-nine (59) beneficiaries of deceased employees of the Omaha works who have received a total of \$600,800 were heard.

There is something else to remember — death benefits are not the only coverage provided. Payment of 50% to the policyholder under the Basic coverage only will be made due to loss of a hand or foot or the sight of an eye. Unlike the Death Benefit provisions of the Benefit Plan, you can name any

beneficiary you choose. Be sure this is kept up to date in line with your wishes. If your named beneficiary is now deceased or you want to change from a parent to a spouse due to marriage, etc., don't put off making this correction. All that is required is to come to the Benefit Office to sign new designation of beneficiary forms and bring your policy along with you.

For so very little, who really can afford to be without coverage which is effective as soon as enrollment takes place? Payments are under payroll deduction. If you should leave the Company, your insurance may be continued. The conversion privilege gives you the opportunity to maintain coverage **without** medical evidence of insurability.



GENERAL MANAGER Howard Nilson recently presented a Western Electric Fund Scholarship to University of Omaha Senior James Duff in the office of University President Kirk E. Naylor (right). The Western Electric Fund presented 203 scholarships to 146 colleges and universities throughout the nation this year. Selection of the student recipients is made entirely by the respective schools.

Plenty of Kin Folks In One Department

Rudy Cerjan, a section chief in Department 251, came up with a surprising list of relative combinations in the wire drawing, insulating and twisting organization.

Four pairs of brothers — Roger and Frank Patrick, Bob and Terry Latimer, Fred and Everett Stewart and Harold and Mike McClary — are insulating machine operators. You will find someone from this group of eight on every one of the three work shifts.

Another insulating machine operator is Roscoe Secret, but his brother, Lamond, is a truck operator. Lerome, Murray

service to the organization. These are Ernest Belik an insulating machine operator, and his brother, Bob, who works in the die lab; Melvin Finley, a twisting layout operator, and his brother, Leonard, an inspector; Lloyd Stevenson, a capacitance monitor operator and his son, Larry, an inspector. Then, there is a pair of cousins—Bill and Frank Metzler who are both twisting machine operators.

Rudy says that these various combinations of relatives make up about 21 percent of the total employees in Department 251.



...tive combinations in the wire drawing, insulating and twisting organization.

Four pairs of brothers — Roger and Frank Patrick, Bob and Terry Latimer, Fred and Everett Stewart and Harold and Mike McClary — are insulating machine operators. You will find someone from this group of eight on every one of the three work shifts.

Another insulating machine operator is Roscoe Secret, but his brother, Lamond, is a truck operator. Jerome Murphy works on the number one wire drawing operation and his brother, Joe, is a truck operator. Bill Martens is a rewind repairman and his brother, Richard, is a utility operator on number one wire drawing.

Senior half of a father-son combination in the department is Martin Janulewicz, a twisting machine operator. His son is Dan Janulewicz, an insulating machine operator.

Several pairs of relatives, while not directly assigned to Department 251, do provide

his brother, Bob, who works in the die lab; Melvin Finley, a twisting layout operator, and his brother, Leonard, an inspector; Lloyd Stevenson, a capacitance monitor operator and his son, Larry, an inspector. Then, there is a pair of cousins—Bill and Frank Metzler who are both twisting machine operators.

Rudy says that these various combinations of relatives make up about 21 percent of the total employees in Department 251.

We've Got A Winner

The WE 120-second commercial, "Man Building His Own Network" has been awarded a certificate of honorable mention at the 14th annual Advertising Film Festival held this year in Cannes, France. There were 1477 entries competing for prizes this year, of which 400 were movie theatre commercials. Of the 1000 TV commercials from 34 countries only 64 won awards.

FIRST CLASS MAIL
U. S. POSTAGE
PAID 10c
OMAHA, NEB.
Permit No. 50



WESTERN

FIRST CLASS MAIL

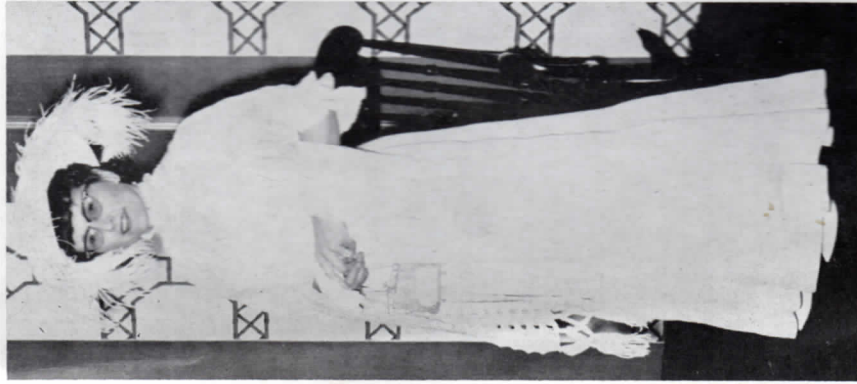
E J WESOLOWSKI
1416 PASADENA AVE
OMAHA NEBR 68107



WHAT'S THE ATTRACTION? It's hard to say because there were several at the Girls Fall Party on November 18 at the Prom Town House. There was a style show, Mellerdrammer, Centennial costume contest and prizes, prizes, prizes.

THEN

LETA BRIGGS' prize winning costume in the authentic competition provided a resounding "then" on November 18.



Girls Party Town House November 18

NOW

PEARLINE MOSELY (441) was one of the models that provided the now portion of the "then and now" theme of the Girls Party.

