

the Westerner

Omaha Works

August, 1980

Special
star-spangled
issue



You will think you are seeing double.

Page 4

for your information

The Omaha Works' new Solleret Club chapter has recognized its first member: Rod Mach of Dept. 201. The club is a Western Electric organization whose members have avoided serious foot injuries because they were wearing safety shoes when accidents occurred.

Rod attained membership because of an incident that happened on the cable shop loading dock. A 700-pound loading dock plate fell on his left foot, but he was uninjured, thanks to company-issued safety-toe shoes with metatarsal guards. The only damage done was a tear to the shoe leather covering the steel toe guard . . .

. . . If you have a child who will complete high school and enter college in 1982, he or she should take the 1980 Preliminary Scholastic Aptitude Test/National Merit Scholarship Qualifying Test this fall. The exam will be given at high schools on Oct. 21 or 25.

Western Electric Fund Merit Scholarships to be awarded in 1982 will be based on exam scores. Students eligible for scholarships include children (natural or legally adopted) of on-roll employees or retirees, and children of deceased employees who had a minimum of 15 years

of service and were on the active or pension roll at the time of death.

Brochures with more information about the scholarship program can be picked up at the public relations office (southeast side of Building 20, first floor) . . .

. . . Earlier this month when Walter Peszulik of Dept. 723 was on his way to work, he came across a car accident. With the help of other motorists, Walter removed one of the accident victims from her car, a woman who appeared to be unconscious. He checked her vital signs. Although her heart was beating, she wasn't breathing. Remembering what he had learned in a Works-sponsored CPR course only a week before, Walter cleared her throat passageway and administered artificial respiration. By the time the rescue squad arrived minutes later, the woman was breathing on her own.

"I'm really glad I took that course," Walter said, adding that he thinks everybody should take cardiopulmonary resuscitation training if they have the opportunity. "You never know when you might need it."



Visitors take tour

NORA HUNT (foreground) of Dept. 435 was assembling 710 connectors the day Northwestern Bell's new vice-president of personnel, Jan Stoney, took a tour of the Omaha Works. Accompanying her on the tour last month was Vic Kassel (left), director of operations, Northwestern Bell and AT&T Long Lines. Works general manager Chuck Meetsma (right) showed the visitors around the plant.

BSSP/SSP results

The following are the June unit values for both the Bell System Savings Plan (BSSP) and the Savings and Security Plan for Non-Salaried Employees (SSP):

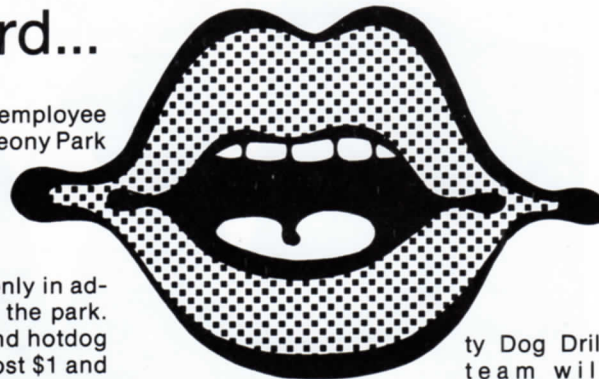
	BSSP		SSP	
	Units Value	Units Credited Per Dollar	Units Value	Units Credited Per Dollar
AT&T	2.0897	0.4785	.9765	1.0239
Government Obligations	2.2183	0.4507		
Equity Portfolio	1.6031	0.6237		
Guaranteed			1.1323	0.8831
Interest Fund	1.0455	0.9564		

Pass the word...

This year's WEOMA Club employee picnic will be held Sept. 21 at Peony Park from noon to 5:30 p.m. Gate and dinner tickets will be on sale in the main cafeteria at lunchtime starting Sept. 8.

Dinner tickets will be sold only in advance — none will be sold at the park. Chicken dinners cost \$2.55 and hotdog dinners, \$2.40. Gate tickets cost \$1 and \$1.75 for children and adults, respectively, if bought in advance, or \$1.75 and \$2.50 the day of the picnic.

In addition to unlimited amusement rides offered at the picnic, other activities will be featured. The Douglas Coun-



ty Dog Drill team will perform, as will the Irish Dancers. A radio-controlled plane demonstration, games, mixed softball competition and a band also are on tap.

In the event of rain, the picnic will be held Sept. 28.

**the
Westerner**
VOL. 24 NO. 7

Linda Ryan
Editor

Published for employees of the Omaha Works
For information write Editor, *The Westerner*,
P.O. Box 14000, West Omaha Station, Omaha,
Nebraska, 68114; or telephone 691-3553

Member

IABC/Omaha

International Association of Business Communicators
Printed by the Omaha Works
Reproduction Department



Western Electric

service anniversaries

august



George Pappas
30 years
8/31/50



Dick Gazda
30 years
8/21/50



Jerry Plucker
25 years
8/1/55

20 years

P. S. Andersen
L. G. Baker
M. O. Bentzen
C. H. Brisbane
R. Bush
F. W. Byers
R. R. Carnegie
A. F. Claussen
B. D. Cooper
G. R. Daily
D. M. DeBoer
S. W. Douglas
V. E. Ecker
M. W. Feddersen

S. H. Garber
P. M. Grubb
L. E. Hibbs
J. J. Hospodka Jr.
A. A. Kastrop
L. V. Keckler
O. A. Knutson
C. C. Lecrone
R. A. Maxwell
J. M. McColley
R. J. Moore
G. C. Novak
B. M. Olderog
A. M. Ormond

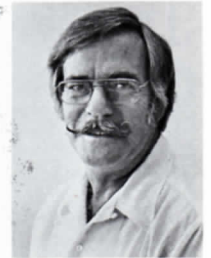
R. A. Peters
L. G. Poffenbarger
M. R. Reed
G. D. Rue
T. K. Rupe
R. J. Siwa
J. P. Stodolka
G. L. Stott
L. G. Thietje
D. T. Thornburg
G. L. Todd
G. S. Volcheck
E. M. Voss
G. J. Zenio



Bob Denton
25 years
8/1/55



Evelyn Keyser
25 years
8/1/55



Sam Keyser
25 years
8/1/55

15 years

W. Armstrong Jr.
J. R. Brainard
D. K. Burress

H. E. Davis
D. L. Dugan
J. L. Ellinger

W. J. Ford
A. D. Galloway
T. M. Gillham
L. W. Gray
S. W. Hansen
K. B. Harvey
B. M. Honaker
Z. C. Jackson
A. G. Jones
G. D. Jones
D. W. Kerans
R. R. Leib
D. G. Loewens

J. D. Lukehart
W. D. Moore
D. C. Neemann
M. E. Nelson
J. J. Novak
I. J. Rueschhoff
J. J. Rush
E. G. Starks
P. C. Stroy
T. Udovic
T. F. Vierk
D. G. Walters
C. A. Williams

retirements



Merle Cook
21 Years

Not pictured:
Vera Williams
21 years

10 years

M. G. Brewer
C. R. Jones
R. L. Palmer

T. L. Rosencrans
M. T. Vondra

Summer students assigned tasks

Three engineering students have been gaining practical experience by working as technical assistants in two departments at the Omaha Works this summer.

Mary Abens, an Iowa State University student, has been assigned to Dept. 472, where her assignments have included evaluating the accuracy and efficiency of the gold bath analyzer in the Works' new gold and solder plating room.

Rich Lundgren, up until he left to resume his school studies earlier this month, was assigned to Dept. 736. Among the University of Nebraska at Lincoln student's tasks was researching a silicon lubricant substitution that is used on the insulating lines.

Pedro Carvalho arrived early in August and will stay through September. He has been assigned to Dept. 472 where he is analyzing the molded parts quality of 710 connectors, among his other duties. He attends an engineering school associated with the University of Lisbon in Portugal.

Rich's and Mary's stay for the summer has been sponsored through the Works' engineering personnel relations. Pedro's stay is sponsored by the International Association for the Exchange of Students for Technical Experience/United States.

suggestion box

It feels pretty good to pay off some bills and still have money left to buy new golf clubs, said **Larry Boe** of Dept. 333.

Larry has joined the growing list of people who have earned awards for the first ideas they've submitted to the employee suggestion awards program. For Larry, his award amounted to \$1,390.

Larry proposed that standard reel lengths for insulated wire be stored in the computer, an idea that will save the company more than \$9,000 a year.

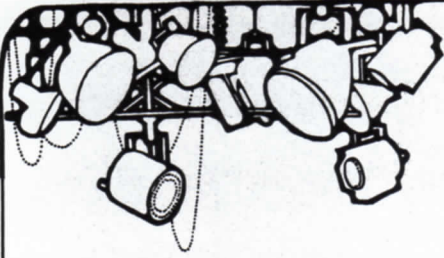
Other suggestion award recipients,

some of them repeat winners, include:

Rex Ellison, Dept. 1231, \$175.
William Napier, Dept. 746, \$135.
Donald Krom, Dept. 411, \$130.
Darrell Yenney, Dept. 741, \$115.
Ted Bulling, Dept. 282, \$100.

Larry Boe





Walt Goodbrod, Dept. 413, comes pretty close to good ol' lonesome George Gobel.



Double takes

If you don't think looks can be deceiving, you've never run into a number of Omaha Works employees who bear resemblances to famous personalities.

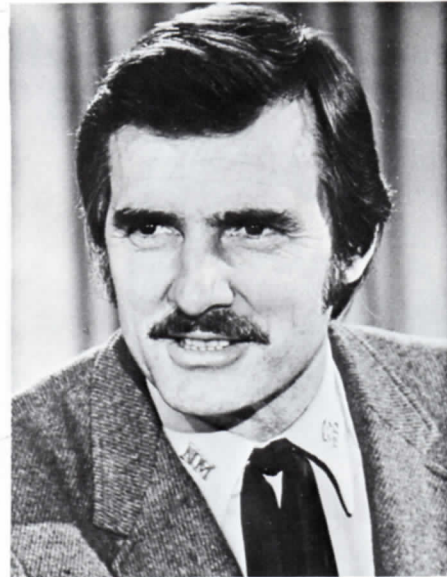
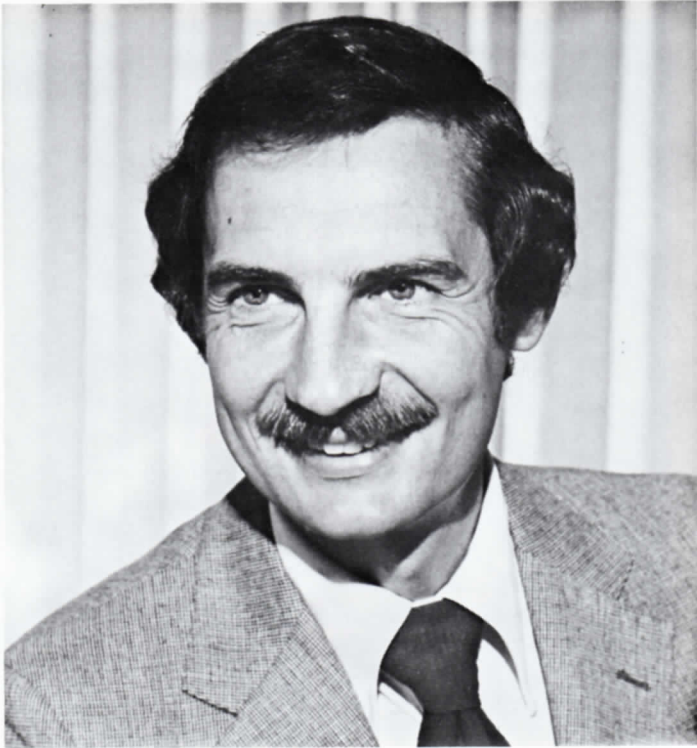
On these and the following pages are photos of employees who could very well turn the heads of autograph seekers. The employees are shown in the larger photos alongside their famous counterparts.

In addition to those pictured, other look-alikes suggested by Westerner readers include Tony Ciullo, Dept. 523 (Telly Savalas); Floyd Kriesel, Depts. 743-744 (Rudy Vallee); Nancy Hume, Dept. 274 (Barbara Eden); Ken Frame, Dept. 413 (George Gobel); Cal Tovrea,

Dept. 746 (Clark Gable); Dean Trudeau, Dept. 725, and Fritz Donahoo, Dept. 251 (Carol Burnett); Junior Best, Dept. 287 (Roger Staubach); and Jerry Wessling - Dept. 735 (Charles Nelson Reilly).

The celebrity connection doesn't end with look-alikes, however. A check of an employee list revealed the names of some well-known types, too: Betty Davis, Dept. 1444; Glenn Miller, Dept. 737; Charlie Brown, Dept. 746; Mary Hartman, Dept. 361; Lee Grant, Dept. 140; and Richard Petty, Dept. 122 . . . not to mention six Bishops, three Popes, two Knights, one Prince, one Queen and a King.





Gary Kahler, Dept. 735, could be a "sub" for Dennis Weaver.

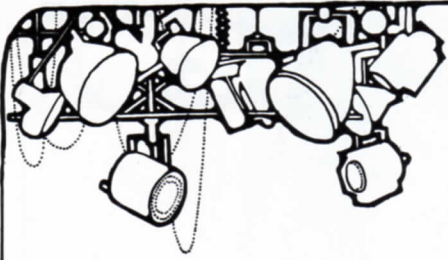
*Employee photos
by Robin Boe
and Linda Ryan*

Other photos provided courtesy of the following:
KMTV Channel 3; KETV Channel 7; American
Broadcasting Companies, Inc.; local Republican
headquarters; state Democrat headquarters; Roy
Gerber Associates; Mahoney/Wasserman & Asso-
ciates; ICPR; Steve Allen; Hanson and Schwam.



Darrell Yenney, Dept. 741, unlike Jimmy Carter, doesn't even like grits.





Double takes

cont'd



Charley Johnson, Dept. 733, was born in Omaha, but Omaha native **Gerald Ford** moved to Washington.



Steve Miller, Dept. 252, grins like **Billy Crystal**.



Len Branecki, Dept. 741, shares **Richard Dawson's** spotlight.





Verdell Temple, Dept. 252, is just as good at hamming it up as **Flip Wilson**.

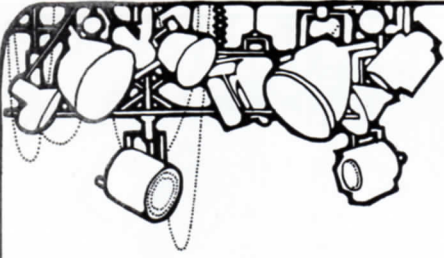


Barb Krzemien, Dept. 525, looks like **Barbara "I Dream of Jeannie" Eden** — but don't rub her the wrong way.



Dwight Lockhart, Dept. 251, is **Don Meredith**. Tea, anyone?





Double takes

cont'd



General Manager Chuck Meetsma can pass for **Steve Allen**. (But can he play the piano?)



Butch Ott, Dept. 443, can identify with **Lennie** and **Frank Caruso**, Dept. 741, is **Squiggy** (left and right, respectively) of the "LaVerne and Shirley" TV show.



Dale Karloff, Dept. 744, has Jack Lemmon's smile.



Dick Baker, Dept. 251, strikes a David Niven pose.



Mary Ann Bennett, Dept. 444, goes without Shirley as LaVerne of the "LaVerne and Shirley" TV show.



A salute . . .

We are the Omaha Works of Western Electric.
We are WE People.

We make the products which make the Bell System the best telecommunications system in the world.

We make cable for spanning distances — long and short, high and low.

We make connectors for splicing cables, and joining wires in the field and in the telephone office.

We make closures to protect the splices, and cabinets to keep the elements out.

We make switches to send messages along their routes, and relays to keep them moving quickly.

We make cords, too — long ones and short ones, curly ones and straight ones.

We make the tools used with many of our products.

We make test sets to help in the installation and maintenance of telephone equipment.

All in all, we make more than 200 different products — all designed to make telephone communication better.

We are the Omaha Works.
We are WE People.

We make load coils to maintain transmission quality throughout long runs of cable.

We make terminal strips for central office connections.

We make wire for special needs and special uses.

We wire CONECS to make connections quick and easy in the field.

We handle all the paper work to make things run smoothly.

We work — safely and skillfully — to make telephone communication better.



to WE People

We are the Omaha Works.
We are WE People.

Today we are reaching for new goals, facing new challenges as more and more of our products battle competition in the marketplace.

We are discovering that quality is not enough — that cost and shipping performance are important factors in selling our products to the telephone companies.

We're meeting that challenge with the same spirit with which we've met over 20 years of challenges . . . optimistic and determined to be the best.

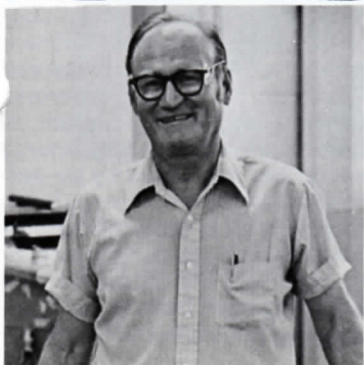
At the same time, other challenges are facing us: The need to protect the environment . . . to recycle and avoid wasting precious resources . . . to conserve energy . . . challenges more difficult and complex than many we've faced in the past.

These, too, we will meet.

And we'll go on . . . making the products that make the Bell System the best telecommunications system in the world.

We are . . . WE People.

Editor's note: This is an excerpt from the narrative for a slide presentation being developed by the public relations department. As Labor Day approaches, it appears here as a salute to Works employees for a job well done. Enjoy your holiday weekend.



Judges pick best posters

One brightly colored poster features a family — including Fido — with a rainbow overhead and the proclamation, "Safety is the key to your family's future." Another poster's message is in the cards: "Don't gamble with safety." Still another, depicting a smiling key, states simply: "The key to safety is me."

Those posters and ten others were chosen by a panel of judges as winners of the Works' 1981 safety calendar contest sponsored by the safety department. In all, 119 entries were submitted by children and grandchildren of employees.

The 13 winning posters will be used to illustrate the cover and months of 1981 safety calendars which are to be distributed to all employees later in the year.



WINNER'S KISS . . . Jennifer Wolf has time for a kiss from grandpa, David Wolf.

VAMPIRES RETURN . . .

Glenn and Johanna Sievers try out their Dracula teeth, courtesy of Chuckles the clown, during the party.



The winners and their sponsoring parent or grandparent will be pictured in the calendar.

The judges based their selections on how well the posters depicted this year's contest theme, "You are the key that unlocks the door to safety." The selections were difficult, the judges said, because all entrants did a fine job promoting safety at home, work and play.

The judges this year were Patricia Gruzd, an art instructor at Millard High; Joan Frost, an art instructor for the Omaha Public Schools; and John Pecoraro, a Ralston Middle School art instructor.

Winners, divided into six age groups from preschool age to 12th grade level, each received one share of AT&T stock. They and their sponsors were treated to a party earlier in the month in the Works auditorium. There they could compare each other's posters which were on display and engage in yet another art form: Making animal shapes out of balloons. Chuckles the clown (alias Gene Lake of Dept. 333) was on hand to entertain, balloons and all. It didn't take long before children and adults got into the act, too.

The winners and their sponsors are:

Overall winner (calendar cover) — Matthew Hopkins, son of Glen Hopkins, Dept. 1231.

Group 1 — Johanna Sievers, daughter of Glenn Sievers, Dept. 435; Jennifer Wolf, granddaughter of David Wolf, Dept. 435.

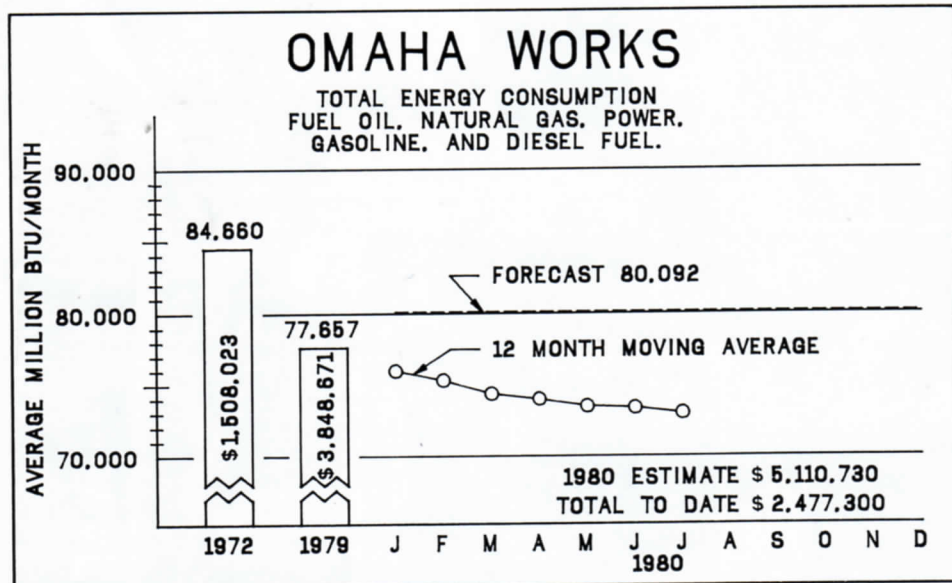
Group 2 — Michelle Crabtree, daughter of Tom Crabtree, Dept. 437; Lisa Biga, granddaughter of Marie Biga, Dept. 728.

Group 3 — Becky Wilson, granddaughter of Marie Biga, Dept. 728; Brad Dinslage, son of Robert Dinslage, Dept. 741.

Group 4 — Matt Hawkins, son of Larry Hawkins, Dept. 437; Ron Cheshek, son of George Cheshek, Dept. 744.

Group 5 — Lora Wilson, daughter of Betty Wilson, Dept. 725; Chris Kent, daughter of Ed Kent, Dept. 445.

Group 6 — Teresa Harken, daughter of Sam Martin, Dept. 443; Jill Kucinski, daughter of Gerald Kucinski, Dept. 725.



energy . . .

less is more

ENERGY-SAVING WAYS at the Omaha Works continue to pay off. As of the end of July, the Works marked the 16th month in a row that total energy consumption has gone down. The chart here shows energy consumption measured per million BTUs. Since 1972, the Works has cut energy usage by 14 percent. In fact, in just seven months, total energy consumption has decreased by six percent. The effort to conserve energy at the Works, meanwhile, is an ongoing program. Doing such things as checking for air leaks, replacing incandescent light bulbs with fluorescent fixtures, or lowering water temperatures is just the beginning.