

WESTERN

WESTERN ELECTRIC COMPANY, INC.
OMAHA, NEBRASKA

THE

VOLUME 5 / NUMBER 5 / MAY, 1961

Six Finalists Chosen For Hello Charley Contest



Mildred Best gets a helping hand with her cake from (left to right) H. J. Czobel, (422), P. K. Maxwell, (422), and V. J. Dacka, (422).

Six lovely ladies have been selected to compete in the 1961 Hello Charley Queen Contest. Named as finalists are Dolores Barkdoll, (442); Annette Desler, (333); Norma Korff, (424); Sharon Lindblom, (442); Donna McLaughlin, (434); and Judith Young, (435).

They were selected following an intensive elimination conducted by this year's Hello Charley Queen Committee held in the Company auditorium April 19. One hundred and thirty-five of those nominated by fellow employees accepted the Committee's invitation to participate in the reception and elimination.

This year's slate of potential queens were judged on five attributes which the Committee considered necessary qualifications for our forthcoming member of royalty. Each contestant was individually rated on beauty, poise, appearance, response to questions and speech ability.

Now there will be an exciting wait until May 17 rolls around.

ographies of the six finalists, whose names and pictures will appear on the May 17 ballot.

Brown-eyed Dolores Barkdoll, a coil winder in the wire spring relay assembly and adjusting department, has the distinction of being the only candidate this year with black hair. However, her height of five feet four inches seems to be the "average" this time, as two of her rivals for the crown are also that tall. She enjoys water sports of boating and skiing as well as collecting pennies. Dolores is a graduate of South High School, and is married and has two young sons, Kenny and John. Her aunt, Rosemary Synowski, works in department 422.

Annette Desler, a calculating machine operator in the cable, Works service engineer of manufacture, plant accounting and bulletin cost department, is five feet six and a half inches tall, with dark brown hair and brown eyes. Annette is also a water sports enthusiast. She enjoys bowling and cooking. A graduate of Benson High School, Annette is also married.

ing, and cooking. Being a housewife, her cooking pursuits come in for a good work out. She is five feet four inches tall with dark brown hair and blue eyes and works in the link and connector frame wiring and testing department. Norma is a graduate of Fort Calhoun High School and has attended Wayne State Teachers College and Omaha University. She taught school prior to coming to Western Electric. Her sister-in-law, Mary Lou Korff, works in the 756A PBX assembly, cable forming, wiring and testing department.

Sharon Lindblom, bench hand coils, is not only the only blonde among the finalists but she is also the shortest. Blue-eyed Sharon is five feet two inches tall and enjoys all types of sports, especially bowling and boating. She attended Tech High School and has participated in the Weoma Sport Club activities in the past year. Sharon works in the wire spring relay assembly and adjusting department, along with Dolores.

Donna McLaughlin, a crown-

Omaha Works Observes

Fifth Anniversary



Mildred Best gets a helping hand with her cake from (left to right) H. J. Casbel, (422), P. K. Maxwell, (422), and J. J. Decker, (422).

Omaha Works Observes Fifth Anniversary

Omaha Works celebrated its fifth anniversary in Omaha on May 17. It was on that day five years ago that Mildred Best became the first locally born employee for the Company's local operations then located in downtown Omaha.

Production shops were set up in 1956 in buildings at 19th and Howard (known as employees as the "B" building) and 16th and Cumming Streets (the "A" building) preparatory to completion of the construction of the permanent location now occupied by the Omaha Works.

Production was started in the new building early in 1958 and a cross-country plant in January, 1959. Our move from the downtown location was completed in 1959.

Since that first day back in 1956, not only our physical size has grown, but our production and number of employees. The Omaha Works now employs some 4200 persons from the Omaha area.

Highlighting the observance of our fifth anniversary was the presentation of a special anniversary cake to Mildred Best by Earl Deitch, manager of the Szabo Food Service, and "Rip" Fick, Assistant Works Manager of the Omaha Works. Mildred works in the miscellaneous frame, AMA cabinet,

concentrator-identifier-wiring and testing department.

Throughout the lunch hour and during the two evening shifts, cake and ice cream was served to employees by the Szabo Food Service.

Upon this occasion, Mr. H. P. Heath, Works Manager, expressing the feeling of his staff and fellow workers, commended the high degree of cooperation experienced between employees of the Company and the community.

These past five years have been pleasant ones for me, watching our own operations expand and also the growth of Omaha and the surrounding communities. We at Omaha Works hope that we have helped in this growth and are anticipating a continuing excellent relationship with our neighbors.

Western Electric has seen a lot of changes through research and development of new manufacturing methods and equipment during the five years the Company has been in Omaha.

We are sure that the next five years will see just as many achievements in the field of communications and can look forward to being a part of it.

(A two-page picture story on our five years in Omaha appears on pages two and three of this issue. Also on page seven are pictures of the anniversary observance.)

by fellow employees accepted the Committee's invitation to participate in the reception and elimination.

This year's slate of potential queen were judged on five attributes which the Committee considered necessary qualifications for our forthcoming member of royalty. Each contestant was individually rated on beauty, poise, appearance, response to questions and speech ability.

Now there will be an exciting wait until May 17 rolls around. That is the date set for the Works-wide election which will determine the three members of the 1961 Royal Court.

In order to help you in your own selections, here are brief biog-

is a graduate of South High School, and is married and has two young sons, Kemy and John. Her aunt, Rosemary Synowski, works in department 422.

Annette Desler, a calculating machine operator in the cable, Works service engineer of manufacture, plant accounting and bulletin cost department, is five feet six and a half inches tall, with dark brown hair and brown eyes. Annette is also a water sport's enthusiast. She enjoys bowling and cooking. A graduate of Benson High School, Annette is also married. Her husband, Dale, has a cousin, A. Desler, who is in department 422.

Departmental clerk Norma Konfi's hobbies are reading, sew-

forming, wiring and testing department.

Sharon Lindblom, bench hand coils, is not only the only blonde among the finalists but she is also the shortest. Blue-eyed Sharon is five feet two inches tall and enjoys all types of sports, especially bowling and boating. She attended Tech High School and has participated in the Weoma Soft Club activities in the past year. Sharon works in the wiring cell assembly and adjusting department along with Dolores.

Donna McLaughlin, a crown-haired, blue-eyed vertical assembler in the cross-arm switch department, is quite an excellent ballroom dancer and is to be (Continued)



Sharon

Dolores

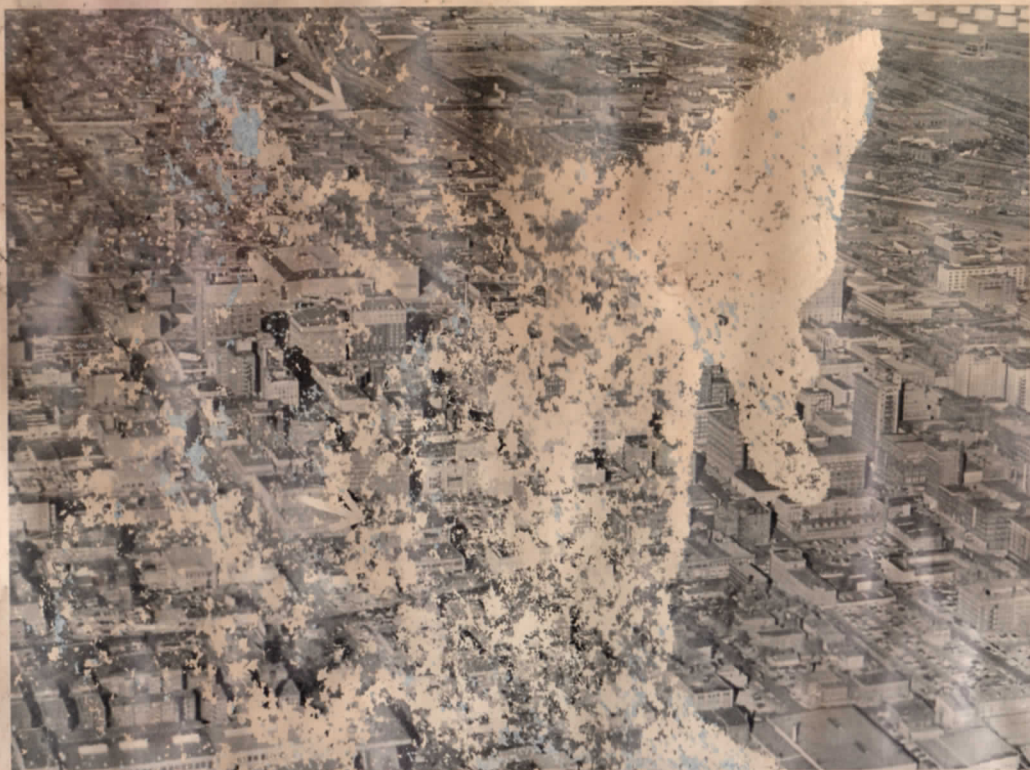
Judith

Annette

Norma

Donna

1956 - Five Years



Aerial view of Omaha taken during our early days in Omaha when both our downtown buildings (arrows).



Mildred Best, who was the first locally hired employee for the Omaha Works, is still a member of the Western family. She is now a wireman in the cross-bar frames department.





In 1956, the town of Millard had a population of 400.



Mildred Best, who was the first locally hired employee for the Omaha Works, is still a member of the Western family. She is now a wireman in the cross-bar frames department.

Methods of production and physical layout of operations has changed over the past five years. Here is a shot taken at the "A" building located at 16th and Cuming Streets, showing two early Omaha employees on relay production. Angelika Hennig assembles relays as Mildred Best solders connections.



Millard has expanded with Western Electric. Today's population of Millard is 1010.

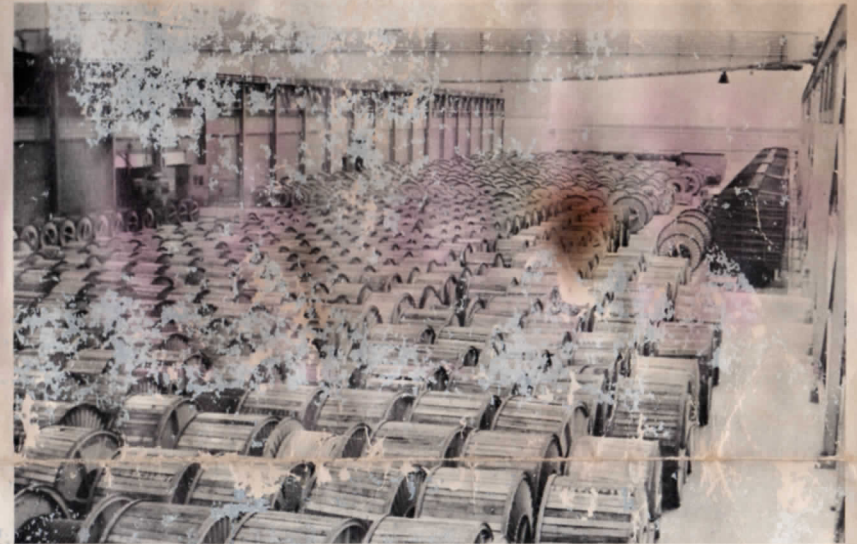
In Omaha - 1961



George Ricker and Richard Nielsen work some of the cable forms at the downtown shops.



Present cable forms use overhead supply reels of wire facilitating their jobs.



Early photo of reel yards shows hundreds of lugged cable reels, a shipping method no longer used.

George Ricker and Richard Nielsen with some of the cable forms at the downtown shops.



Early photo of reel yards shows hundreds of lugged cable reels, a shipping method no longer used.

The Omaha Works is impressive as viewed from the air. Note the growing nearby residential areas to the north and east. The skyline of Omaha is in the background.



Published monthly for the information of Omaha Works employees by the

MAY

1961

Western Electric Company
INCORPORATED

Robert Carver, Editor

May Anniversaries

25 Walter A. Roggenkamp will observe his twenty-fifth year with Western Electric on May 8.



A native of Chicago, Walter graduated from the Tilden Technical High School there. He originally joined the Company at the Hawthorne

Works in 1936 as a bench hand.

He was named supervisor in the flat type relay department at Hawthorne in 1956, and three years later, Walter was promoted and transferred to the Omaha Works as section chief of wire spring relay light machining. He is presently chief of the machine maintenance section, second shift.

Mr. and Mrs. Roggenkamp have four children and live at 3806 N. 85th Street in Omaha.

20 William Zorko, (242), May 15.

Robert E. Hansen, (273), May 19.
Edward S. Kot, (441), May 27.

15 Vivian D. Bullock, (437), May 13.

Leland C. Allen, (436), May 15.
Edward J. Thompson, (441), May 15.

George A. Holste, (438), May 19.
Quentin E. Hartz, (422), May 20.
Waldo N. Holm, (441), May 20.
Evelyn R. Gentry, (422), May 31.

Harold W. Hawkins, (258), May 31.

10 Virgil S. Bowman, (433), May 14.

Merle E. Laughlin, (721), May 14.

Rudy Salzman, (441), May 15.
Dorothy N. Bowman, (424), May 21.

Alvin Mieran, (424), May 21.
Jo Anne McGeer, (423), May 23.

Finalists Chosen

Bowling Scores

Final standings of the Weoma Bowling Leagues will be published in the June issue of the Westerner. As of May 3, the standings were as follows:

AFTERNOON LEAGUE

Top team: The Guzzlers; High individual series: Jo McDonald, score 632; High team series: Alley

711; High individual series—Women: Lil Miller, score 680; High team series: Quads, score 2094.

OWLS LEAGUE

Top team: Starlighters; High individual series—Men: J. Hoheisel, score 660; High individual series—Women: Georgia Pierce, score 694; High team series: Nothings.

Second Annual Women's Party Has "Vacation Time" Theme



Wonder what all those women are looking at?



The Playmates were the featured act at the Women's Party.

Those attending the Second Annual Women's Spring Party had an evening of fun and relaxation.

Theme of this year's party was "Vacation Time". Throughout the party room festive posters adorned the walls displaying the attraction of such interesting vacation spots as Hawaii, England, Continental Europe, and the Far East.

Local travel bureaus and transportation companies provided the posters and model trains, buses, and airplanes which were used in carrying out the chosen theme. Each table had a floral center piece arranged with the national flags of foreign lands.

After the dinner, Peggy Reed, (429), presided over the awarding of gift certificates to local stores. Recipients were Marilyn Russell, (263); Eleanor Hundt, (920); Rita Baker, (250); Norma Bauer, (712); Ruth Hoheisel, (6354); Mary Shannon, (262); Patricia Soper, (755); and Bonnie Maschka, (6354). Mary Lou Korff, (425), was presented the attractive center piece gracing the head table.

Completing the evening's entertainment program was the performance of the nationally-known singing trio "The Playmates" who presented some of their hit recordings.



lay light machining. He is presently chief of the machine maintenance section, second shift.

Mr. and Mrs. Roggenkamp have four children and live at 3806 N. 85th Street in Omaha.

20 William Zorko, (242), May 15.

Robert E. Hansen, (273), May 19.
Edward S. Kot, (441), May 27.

Finalists Chosen

(Continued from Page One)

seen at the Company sponsored dances. She is five feet four inches tall. Donna, who attended South High School, has an uncle, Jimmy McLaughlin, (271), and cousin, John McLaughlin, (712), at the Omaha Works who will be pulling for her victory on May 17.

Last in alphabetical order but not in beauty is Judith Ann Young, departmental clerk in the terminal strip department. Judy is five feet six inches tall and has dark brown hair and brown eyes. Among her many hobbies and favorite pasttime are collecting stereo records and swimming, boating and bowling. Her husband, Elmer, (435); father, Carl Malone, (274); and her mother, Mary Malone, (422); all work here at Western and are eagerly awaiting the outcome of the election. Judy is a member of the Weoma Choral Club.

One of these six finalists will wear the crown for the coming year. Her Royal Coronation Dance will be held in the Royal Grove at Peony Park from 9 p.m. to 1 a.m. on June 10. Jack Swanson and his Orchestra will provide the music for your dancing pleasure. Contributions will be \$1.00 per person.

Making all the necessary arrangements for the Coronation Dance is the Dance Committee composed of Harry Curtis, (311) and Tom Waples, (311).

Alvin Mieran, (424), May 21.
Jo Anne McGeer, (423), May 23.

Bowling Scores

Final standings of the Weoma Bowling Leagues will be published in the June issue of the Westerner. As of May 3, the standings were as follows:

AFTERNOON LEAGUE

Top team: The Guzzlers; High individual series: Jo McDonald, score 632; High team series: Alley Oops, score 1836.

CABLE LEAGUE

Top team: Five Aces; High individual series: D. Stinson, score 632; High team series: Controllers, score 2649.

CLASSIC LEAGUE

Top team: Aces-Hi; High individual series: Hallett and Korinek, score 683; High team series: Jokers, score 2943.

CROSSBAR LEAGUE

Top team: Wreckers; High individual series: D. Hartung, score 701; High team series: Switches, score 3107.



Charles Schmidt, (443), bowled a 288 game in the Classic League.

MEN'S LEAGUE

Top team: Guttersnipes; High individual series: W. Moberg, score 725; High team series: Jets, score 3183.

MIXED LEAGUE

Top team: Quads; High individual series—Men: F. Kujawa, score

711; High individual series—Women: Lil Miller, score 680; High team series: Quads, score 2094.

OWLS LEAGUE

Top team: Starlighters; High individual series—Men: J. Hoheisel, score 660; High individual series—Women: Georgia Pierce, score 694; High team series: Nothings, score 2364.

WESTERN LEAGUE

Top team: Odd Balls; High individual series: J. Sempeck, score 647; High team series: Empallas, score 2440.

WOMEN'S LEAGUE

Top team: Lucky Strikes; High individual series: Grace Anania, score 548; High team series: Gutterdusters, score 2231.

WORKS SERVICE LEAGUE

Top team: Alley Katz; High individual series: D. Novak, score 633; High team series: Bulldozers, score 2698.



Tournament winners are, (left to right, front row): Reggie Rasner, Bob Lewis, Vergil Bamsey, Sam Christiansen, and Al Pihlaja. (Back row): Bob Kilmer, John Janczy, Bob Metz, Club President, Glenn Miller, and Floyd Rastede.

Bowling Tournament Winners Announced

Winners of the Invitational Bowling Tournament sponsored by the Weoma Club were announced late last month.

Names of winners and their

scores in each of the events were as follows (in order of final standing):

TEAMS: Jokers, 2991; Richardson's Five, 2928; Lucky Seven, 2920; Kramar's, 2196; and Eight Balls, 2903.

SINGLES: R. Kilmer, 670; F. Rastede, 663; V. Kalchik, 643; O. Eby, 641; T. Stemple, 636; E. Dixon, 626; D. Fransworth, 622; P. Diederich, 619; D. Schrader 617; J. Tyrcha 616; E. Sauter 615; C. Maly, 615; R. Rasner, 613; and P. Nalow, 610.

DOUBLES: G. Miller and J. Janczy, 1251; D. Cera and H. Philippi, 1226; P. Diederich and C. Maly, 1216; B. Finnefrock and D. Petersen, 1212; P. Nalow and D. Baker, 1207; D. Schrader and K. Moser, 1199; M. Montgomery and T. Stemple, 1193; J. Kelly and L. Meyers, 1190.

ALL EVENTS: F. Rastede, 1897; D. Cera, 1848; G. May, 1846; A. Pihlaja, 1823; K. Lillich, 1822; B. Finnefrock, 1810; R. Rasner, 1810; and E. Dixon, 1808.

New T. & D. Graduates



Recent Tool and Die graduates are (left to right): Jim Salkeld; Richard W. Johnson; Don Schuler; Don Moss. Back row: M. Osterchill, Assistant Superintendent, Tool and Die Training Program; Vernon Wheeler; H. P. Heath, Works Supervisor; Harry Gau; and R. A. Jahnke, Training Program Section Chief.

FIRE NOW RAGING OUT
NX - A - FOR COURTEE
CREDIT UPI PHOTO
FOR PM FRIDAY, APR



Top to bottom: punch card data, written message, TV, telephone, teletypewriter and telephotograph—modern communications services via Bell Telephone facilities.

“Telephone” means a lot more than talk

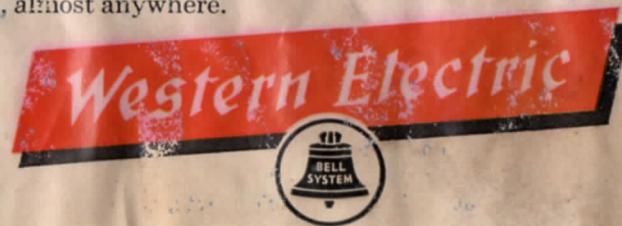
Your familiar Bell telephone is only a tiny part of a communications network that carries any thought in almost any form, almost anywhere—a complete communications system. Over the network go not only your voice but handwritten and typewritten messages, photographs, TV programs. It even links machines that “talk to each other” in number language.

Versatility in this great communications network is possible because of the vast array of inter-connecting Bell System circuits and switching facilities. Western Electric manufactures or supplies most of the equip-

ment for this—literally thousands of different products—all planned to work together as one. This is possible because Bell System people always work closely together in the design, construction and operation of the network’s parts.

Like Bell Telephone Laboratories who design what we make and the Bell Telephone companies who use our products to serve you, Western Electric is proud of its essential role in the Bell System . . . the complete communications system so versatile it carries any thought in almost any form, almost anywhere.

Manufacturing and supply unit of the Bell System



This advertisement appears in color in:

Life May 12, 1961
Newsweek May 15, 1961

Time June 9, 1961
Saturday Evening Post June 10, 1961

The following annual report of the Employee's Benefit Committee summarizes how the Plan for Employees' Pensions, Disability Benefits and Death Benefits assisted Western Electric people and their families in 1960. Through the Benefit Plan employees are financially protected in the event of disability or death and are guaranteed a source of income after retirement. Unlike many other plans, the W.E. Plan is completely non-contributory. All costs are paid by the Company.

This report also furnishes information on related benefits outside the Plan, such as group insurance and extraordinary medical expenses.

1960 REPORT on employees' BENEFITS



\$91 million paid for benefits and related expenses

SERVICE PENSIONS

In 1960, 767 employees retired on service pensions. The total number on the pension roll at the end of the year was 6,033. Service Pension payments amounted to \$11.1 million. The Trust Fund from which the pensions are paid requires adding large sums of money each year to assure that enough will always be available to meet future as well as current obligations. Company actuaries estimate that today's pensioners are outnumbered about 10 to 1 by employees who will eventually retire on pensions.

ACCIDENTS

Western Electric employees, in maintaining their excellent safety record, dropped the injury rate to 0.96 disabling injuries per million man hours—a record low. On-the-job accident benefits and related payments outside the Plan totalled \$839,000.

DEATHS

The Company recorded with regret 619 deaths among active and retired employees in 1960. Plan payments to beneficiaries totalled \$2.8 million, exclusive of group life insurance payments.

GROUP INSURANCE

A total of \$3.8 million was paid in the 1960 policy year to beneficiaries of active and retired employees under the group life insurance program for W.E. and its subsidiaries. The cost of the program, which is shared by the Company and its employees, came to \$8.1 million. W.E. paid \$4.4 million; employees paid \$3.7 million. Coverage under the group life insurance program amounted to \$327.1 million at the end of the policy year, including \$30.7 million provided without charge for retired employees.

tial coverage (beyond Blue Cross-Blue Shield coverage) of expenses incurred for major medical treatment. The entire cost of the plan is borne by the Company. At year's end, 80,397 active employees were receiving coverage, and negotiations were in progress, or soon to begin, with unions representing an additional 26,557.

SOCIAL SECURITY

In addition to all of the foregoing costs, the Company in 1960 paid \$18.5 million as its share of taxes under the Social Security Law. This was nearly 10 times the total amount of \$2 million deducted from service pensions.

SUMMARY

Taken altogether, the Company's expenses for employee benefits of all kinds in 1960 amounted to \$91 million, or about \$670 per employee.

TRUSTEE'S REPORT OF PENSION FUND

established by

WESTERN ELECTRIC COMPANY, INCORPORATED

BALANCE IN FUND—DECEMBER 31, 1959.....	\$561,687,013
Additions to Fund During 1960	
Payments into Fund by Company.....	\$50,260,000
Investment Earnings, including gain or loss on disposal of securities.....	18,186,666
Total Additions.....	\$68,446,666
Disbursements for pensions during 1960.....	11,058,747
Net Increase in Fund.....	57,387,919
BALANCE IN FUND—DECEMBER 31, 1960.....	\$619,074,932

Comprises:

U. S. Government Obligations.....	\$ 6,381,179
Obligations of Telephone Companies.....	128,463,046
Public Utility, Railroad and Industrial Obligations...	344,066,740
Other Obligations.....	93,831,679
Common Stocks.....	40,508,309
Cash, accrued interest and dividends.....	5,823,979

gations. Company actuaries estimate that today's pensioners are outnumbered about 10 to 1 by employees who will eventually retire on pensions.

ACCIDENTS

Western Electric employees, in maintaining their excellent safety record, dropped the injury rate to 0.96 disabling injuries per million man hours—a record low. On-the-job accident benefits and related payments outside the Plan totalled \$839,000.

SICKNESS ABSENCE PAYMENTS

Sickness and off-the-job accidents accounted for 700,000 lost work days during 1960. Sickness absence payments totalled \$13.6 million including \$5.1 million for all or part of the first week of absence not covered by the Plan.

in the 1960 policy year to beneficiaries of active and retired employees under the group life insurance program for W.E. and its subsidiaries. The cost of the program, which is shared by the Company and its employees, came to \$8.1 million. W.E. paid \$4.4 million; employees paid \$3.7 million. Coverage under the group life insurance program amounted to \$327.1 million at the end of the policy year, including \$30.7 million provided without charge for retired employees.

EXTRAORDINARY MEDICAL EXPENSE

Late in 1960, a new Extraordinary Medical Expense Plan was inaugurated which offers new protection to both active and retired employees and their families through substan-

SOCIAL SECURITY
In addition to all of the foregoing costs, the Company in 1960 paid \$18.5 million as its share of taxes under the Social Security Law. This was nearly 10 times the total amount of \$2 million deducted from service pensions.

SUMMARY

Taken altogether, the Company's expenses for employee benefits of all kinds in 1960 amounted to \$91 million or about \$679 per employee as shown in the charts below. The cost per employee keeps going up and the number on pension will increase steadily. This means that the Company will need to contribute large sums to the Pension Fund each year to assure that sufficient funds will be available to pay all these pensions.

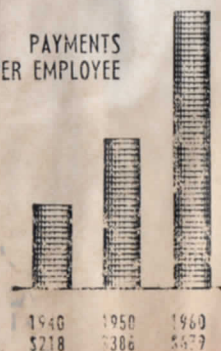
Investment earnings, including gain or loss on disposal of securities	18,186,666
Total Additions	\$68,446,666
Disbursements for pensions during 1960	11,058,747
Net Increase in Fund	57,387,919
BALANCE IN FUND—DECEMBER 31, 1960	\$619,074,932
Comprises:	
U. S. Government Obligations	\$ 6,381,179
Obligations of Telephone Companies	128,463,046
Public Utility, Railroad and Industrial Obligations	344,066,740
Other Obligations	93,831,679
Common Stocks	40,508,309
Cash, accrued interest and dividends	5,823,979
Total	\$619,074,932

NOTE: Obligations are shown on amortized basis and common stocks at cost.

BANKERS TRUST COMPANY, Trustee

New York, N. Y. — January 31, 1961

PAYMENTS PER EMPLOYEE



Over the past 20 years, the amount of money paid to W.E. people in benefits or set aside for them in the Pension Fund, on a per employee basis, has more than tripled.

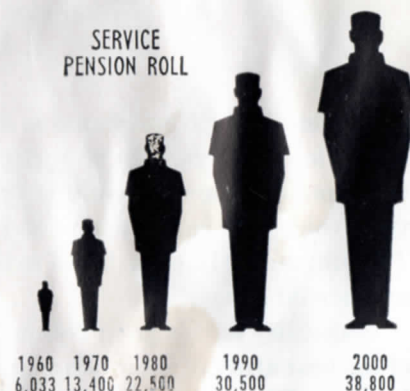
PAYMENTS UNDER PLAN

To Trust Fund for Future Service Pensions	\$50,260,000
Disability Pension payments	557,601
On-the-job accident payments	487,561
Sickness and off-the-job accident payments	8,493,029
Death payments (active and retired employees)	2,764,232
Total Under Plan	\$62,562,423

MEMBERSHIP OF EMPLOYEES' BENEFIT COMMITTEE

Committee members at end of 1960 were: F. J. Hammel, C. R. Bergmann, H. D. Lohman, H. G. Mehlhouse, J. H. Moore, V. J. Gilbert, T. W. Spicer, H. S. Cody, Jr., and W. S. Yeager. The Secretary was M. L. Lombard. The Committee takes this opportunity to express its appreciation to the Area Committees, Authorized Delegates and Benefit Service Organizations for their assistance in the administration of the Plan.

SERVICE PENSION ROLL



Number of retired employees on the Company's Service Pension Roll is expected to double in the next 10 years and will be more than six times as large by the year 2000.



Curling champions for 1960-1961 are Ed Swanson, (426); K. G. Cahill, (311); Frank Grahek, (425); and J. J. Buckley, (423).

Champions Sweep To Victory

The swishing sounds of brooms swiftly sweeping the ice has faded away for another season. But the cheers that rocked the local Curling League when Frank Grahek's rink "stoned" their way to victory as the 1960-1961 Weoma Curling Champions still echo through the Ak-Sar-Ben buildings.

At the end of the season, there was a four-way tie for first place. Following a semi-final playoff which pitted A. A. Jacobs' rink against P. K. Maxwell's rink and Jack Anderson's four against Frank Grahek's, Grahek and Max-

well were cast against each other for the final round.

It was a close finish, but Grahek and his three broom-manned buddies made it to the "house" carrying home the honors.

Members of the Maxwell rink were Dick Lee, Wyllys Rheingrover, and Don Knott.

During the season, an increased interest in curling has resulted in additional rinks being formed and more nights of play offered by the Weoma Curling League.

A. A. Jacobs and P. K. Maxwell of the Omaha Works were members of the Ak-Sar-Ben Curling Club rink which competed in the National Curling Competition at Grand Forks, North Dakota, representing the state of Nebraska.

Pat Models New Defense Helmets



Golf Leagues Open Season

(The Monday and Thursday Leagues began regular play too

Engagements

Helen Rodaway, (443), to Frank Schroeder, March 17, 1961.
Irene Wittman to Larry Holmes, (426), March 29, 1961.
Ruth Otto to Richard Laughlin, (243), March 29, 1961.
Lorraine Brandt to Donald Luben, (433), April 1, 1961.

Marriages

Joyce W. Walker, (433), to Donald E. Combs, January 28, 1961.
Vaunda Brophy to William Schwenck, (264), March 18, 1961.
Sandra Kay Franks, (262) to Arthur Claussen, April 1, 1961.
Nancy L. Johnson to T. J. Hazuka, (6354), April 8, 1961.
Barbara A. Houchin, (434), to James J. Vasek, April 8, 1961.
Judy Ann Bond to Douglas Dee Colberg, (433), April 8, 1961.

Births

Mr. and Mrs. Robert P. Carver, (312), a daughter, Caroline Ruth, January 27, 1961.
Mr. and Mrs. James Slosser, Jr., (263), a daughter, Kari Kay, February 17, 1961.
Mr. and Mrs. Arlo Nielsen, (443), a daughter, Lauri Ann, March 15, 1961.
Mr. and Mrs. Harold E. Clanton, (241), a daughter, Vicki Lynne, March 18, 1961.
Mr. and Mrs. W. G. Brandt, (6351), a son, Miles William, March 19, 1961.
Mr. and Mrs. Willard D. Davis, (433), a daughter, Joan Marie, March 28, 1961.
Mr. and Mrs. Lawrence A. Tietz, Jr., (433), a daughter, Rebecca Ann, March 28, 1961.
Mr. and Mrs. T. W. McFarling, (735), a son, Jon Warren, April



Pioneers had an enjoyable evening of dining and dancing April 15.

Pioneers Have Dinner-Dance

The Arthur B. Goetze Council of the Casper E. Yost Chapter of the Telephone Pioneers of America sponsored their spring dinner-dance for members and their ladies April 15 in the Ballroom of the Hotel Blackstone.

Guests at the annual affair were John Jacobson, president of

the Yost Chapter; Fred Dunham, secretary of the Yost Chapter; Russell Pope and Denton Jones, officers of the Omaha Council.

One hundred and forty-two attended the dinner-dance.

Following the dinner, members and guests danced to the music of "The Dixiecrats".

Stong Speaks to Astronomers



Jack Anderson's tour against Frank Grahek's, Grahek and Max-

Pat Models New Defense Helmets



Pat Pribransky, (311), models the new helmets which will be used in the Civil Defense Program. The helmets are in four colors: Blue, (building wardens), Yellow (radiological crew), Red, (rescue crews), and Green, (first aid crew).

A. A. Jacobs and T. K. Maxwell of the Omaha Works were members of the Ak-Sar-Ben Curling Club rink which competed in the National Curling Competition at Grand Forks, North Dakota, representing the state of Nebraska.

Golf Leagues Open Season

(The Monday and Thursday Leagues began regular play too late to be included in this issue.)

As of April 19, here are the standings for the Wednesday and Friday Leagues and number of points scored.

WEDNESDAY LEAGUE

Bogeys	4½
Chippers	4
Sandbaggers	4
15th Holers	2
Far Fours	2
Sod Busters	1½

FRIDAY LEAGUE

Rough Riders	6
Chippers	5
Duffers	3½
Pot Shots	2½
Putters	1
5-Irons	0

- 15, 1961.
- Mr. and Mrs. Harold E. Clanton, (241), a daughter, Vicki Lynne, March 18, 1961.
- Mr. and Mrs. W. G. Brandt, (6351), a son, Miles William, March 19, 1961.
- Mr. and Mrs. Willard D. Davis, (433), a daughter, Joan Marie, March 28, 1961.
- Mr. and Mrs. Lawrence A. Tietz, Jr., (433), a daughter, Rebecca Ann, March 28, 1961.
- Mr. and Mrs. T. W. McFarling, (735), a son, Jon Warren, April 2, 1961.
- Mr. and Mrs. A. F. Fanckboner, (732), a daughter, Lori Ann, April 7, 1961.
- Mr. and Mrs. C. W. Petersen, (732), a daughter, Kristine Lynn, April 7, 1961.
- Mr. and Mrs. Calvin Helme, (254), a daughter, Lindy Ann, April 8, 1961.
- Mr. and Mrs. Bob Kinney, (433), a son, Kevin Wiley, April 11, 1961.
- Mr. and Mrs. Frank J. Markesi, (424), a daughter, Peggy Ann, April 15, 1961.
- Mr. and Mrs. Wallace G. Hoffman, (424) a son, Dean Matthew, April 18, 1961.



C. L. "Red" Stong prepares a demonstration during talk to the Astronomers.

C. L. "Red" Stong, Superintendent of Public Relations, at 195 Broadway, was the guest speaker at the April 19 meeting of the Weoma Club's "The Astronomers".

Mr. Stong, who recently appeared on the Dave Garroway television program "Today", spoke to the group on general science and astronomy. He also gave a series of scientific experiments which were both instructive and entertaining.

"Red" has been an active columnist for "Scientific American" magazine for many years. Recently the magazine published his columns on amateur science in book form which has received wide acclaim as an excellent guide for the amateur scientist.

Also attending the meeting were members of the Omaha Astronomy Club and other interested persons from the surrounding area.

Free Ice Cream And Cake Served At "Birthday Party"



Throughout the lunch periods on April 20, the Szabo Food Service gave ice cream and cake to all employees in the three cafeterias. Above are shots taken in the cafeterias showing many Westerners enjoying the special "birthday" treat.

Works Donors Give Two Hundred and Twenty-Eight Pints of Blood

Two hundred and twenty-eight pints of blood were donated by Omaha Works employees during the two-day visit of the Red Cross Bloodmobile in mid-April.

The Works' all-time high record is two hundred and fifty pints which were donated last November.

Those donating blood during the visit, sponsored by the Wecma Club, were:

- Department 240
- | | |
|----------------|------------------|
| P. D. Amiotte | R. Kensinger |
| J. C. Binko | J. D. Noakes |
| E. C. Bosak | M. Osterchill |
| G. P. Casey | R. E. Payne |
| R. J. Coufal | W. B. Pierce |
| T. D. Crow | R. R. Russell |
| D. P. Dai | K. D. Tracy |
| G. D. French | G. C. Utterback |
| R. B. Gaddie | W. G. White |
| H. L. Groleau | J. R. Winchester |
| J. M. Holoubek | W. A. Wolff |



- Department 250
- | | |
|-----------------|---------------|
| K. L. Bernhardt | W. T. Koch |
| J. Bogan | J. A. Mallory |
| P. A. Bourrelle | D. A. Mueller |
| D. F. Collins | R. R. Oxley |
| J. Dearing | D. Portera |
| R. W. Dunn | R. L. Ramey |
| R. H. Egger | W. E. Sherman |
| R. A. Hansen | S. A. Svaboda |
| S. Ide | D. W. Teague |
| C. W. Jones | R. M. Tracy |
| D. F. Kinnally | |

- Department 260
- | | |
|----------------|-----------------|
| R. M. Backes | C. W. Muehl- |
| J. H. Cameron | hausen |
| J. M. Cockrill | A. W. Pendray |
| D. Hartung | J. Ritonya |
| H. N. Harvey | G. E. Schaulis |
| H. W. Hawkins | G. L. Stange |
| D. R. Hoden | E. A. Stiebler |
| U. L. Koltes | T. E. Urban |
| K. Kucera | D. Van de Water |
| H. E. LaLone | T. B. Williams |
| | J. M. Woodward |

- Department 270
- | | |
|--------------|------------------|
| S. W. Abel | H. P. Lynch |
| W. M. Buek | E. D. Malone |
| N. Cook | W. J. Napier |
| L. E. Davis | P. E. Nolan |
| M. B. Dawson | R. F. Oglevie |
| O. Dvorak | D. D. Osborn |
| J. A. Flynn | R. H. Perina |
| R. G. Gibson | D. J. Pfeifer |
| R. F. Hardin | W. J. Plymale |
| J. W. Hiykel | Z. B. Plymale |
| J. L. Hurd | R. J. Sterba |
| N. Key | E. Viola |
| F. M. Knapp | G. R. Welshinger |
| C. D. Koukol | A. Wolf |
| H. F. Kruse | |

- Department 310
- | | |
|------------------|---------------|
| D. N. Fletcher | R. B. Matheny |
| J. R. Huddleston | |

- Department 320
- | | |
|---------------|-----------------|
| H. Heese | J. V. Sonderman |
| R. E. Pierson | E. J. Wigg |

- Department 330
- | | |
|------------|--|
| R. Campain | |
|------------|--|

- Department 420
- | | |
|-----------------|----------------|
| E. Baier | D. F. Kuta |
| W. Barry | E. M. Landis |
| V. Bishop | C. D. Lang |
| J. T. Bourke | D. F. Lawson |
| D. R. Coleman | G. T. Logan |
| L. D. Dale | B. J. McGarth |
| N. T. Dalton | G. A. Merriman |
| P. G. Diederich | D. L. Nybbelin |
| P. J. Dreves | O. E. O'Mara |
| K. Eggersgluess | K. E. Ostrand |
| D. L. Fritz | L. J. Rauch |
| A. R. Head | K. W. Sanders |
| M. T. Hennig | E. T. Schrader |
| P. T. Hinkel | D. Stickman |
| J. E. Hinman | G. T. VanRoy |
| W. G. Hoffman | D. Wagner |
| A. L. Kaup | R. L. Williams |
| V. D. Klau- | J. Velazquez |
| mann, Sr. | |

- Department 430
- | | |
|---------------|---------------|
| I. O. Ahrens | F. A. Logan |
| D. F. Allas | B. M. New |
| S. B. Alley | W. Pokorny |
| L. E. Babcock | D. Rumph |
| M. Beasley | C. E. Sagert |
| W. B. Beebee | P. L. Segobia |
| M. Bennett | M. Sievers |
| J. W. Combs | K. E. Skinner |



What is your full name and address? What is your department?

- Department 440
- | | |
|--------------------|----------------|
| L. G. Anderson | L. J. Kennedy |
| M. Baker | M. M. Kohlback |
| J. Berger | R. L. Koltes |
| M. N. Bruno | B. W. Kreger |
| G. J. Christiansen | G. Kritenbrink |
| D. L. Clary | N. D. LeGrand |
| V. S. Corman | H. K. Loomis |
| G. L. Faller | A. Ormond |
| R. H. Filter | C. C. Schmit |
| A. W. French | D. Werth |
| D. L. Geiger | D. W. West |
| K. J. Johnson | |

- Department 701
- | | |
|--------------|--|
| R. B. Burton | |
|--------------|--|
- Department 710
- | | |
|-------------------|----------------|
| W. C. Becher, Jr. | J. E. Sheehan |
| G. F. Jones | W. F. Stessman |
| G. E. Reimers | H. M. Strong |
| | E. H. Valenta |

- Department 730
- | | |
|---------------|------------|
| A. Fanckboner | R. P. Mehn |
|---------------|------------|
- Department 740
- | | |
|--------------|-------------|
| P. E. Lawler | O. H. Olson |
| L. W. Myers | D. E. Reser |
- Department 750
- | | |
|-----------------|-----------------|
| L. E. Bauer | E. E. Shonka |
| R. H. Haralson | I. L. Smith |
| D. A. Leonovicz | J. A. Trenerry |
| J. W. Peterson | K. W. Zimmerman |
| J. H. Shoemaker | |

- Department 1411
- | | |
|----------------|--|
| E. R. Campbell | |
|----------------|--|
- Department 1960
- | | |
|-----------|----------------|
| V. LeGros | C. C. Tompsett |
|-----------|----------------|



This won't hurt a bit, much!

A. R. Head
M. T. Hennig
P. T. Hinkel
J. E. Hinman
W. G. Hoffman
A. L. Kaup
V. D. Klau-
mann, Sr.

Department 430

I. O. Ahrens
D. F. Allas
S. B. Alley
L. E. Babcock
M. Beasley
W. B. Beebee
M. Bennett
J. W. Combs
H. A. Fisher
L. M. Galata
R. J. Guy
J. L. Hurst
B. B. Jones
F. S. Kros
B. L. Kunce

F. A. Logan
B. M. New
W. Pokorny
D. Rumph
C. E. Sagert
P. L. Segobia
M. Sievers
K. E. Skinner
D. Stevens
J. J. Thiele
E. K. Turnquist
B. Underwood
V. J. Wegner
R. V. Wilkerson

M. N. Bruno
G. J. Christiansen
D. L. Clary
V. S. Corman
G. L. Faller
R. H. Filter
A. W. French
D. L. Geiger
K. J. Johnson

Department 701

R. B. Burton

Department 710

W. C. Becher, Jr.
G. F. Jones
G. E. Reimers
J. Setzer

J. E. Sheehan
W. F. Stessman
H. M. Strong
E. H. Valenta

Department 720

I. J. Chamberlain
L. S. Corell
R. L. Hiatt

J. J. Pappas
W. J. Rea
S. J. Salyards

B. W. Kreger
G. K. Krittenbrink
N. D. LeGrand
H. K. Loomis
A. Ormond
C. C. Schmit
D. Werth
D. W. West

Department 740

P. E. Lawler
L. W. Myers
O. H. Olson
D. E. Reser

Department 1411

E. R. Campbell

Department 1960

V. LeGros
C. C. Tompssett

Department 6350

F. A. Donaldson
E. A. Gembica
W. Goodbrod
A. C. Holman

C. Poske

G. T. Stanek

C. T. Zimmerman

United States Savings Bond Campaign Opens May 29

Once again employees of the Omaha Works will have the opportunity to actively share in their country's future by participating in the Annual United States Savings Bond campaign which begins at all Company locations on May 29.

Last year those enrolled in the program increased total payroll deductions for the purchase of savings bonds to in excess of \$25,000. Launching this year's campaign, H. I. Romnes, President of Western Electric, issued the following letter last week:

"This year marks the 20th anniversary of the United States Savings Bond Program. We are proud to be numbered among the nation's companies which offer the payroll savings plan for regular bond purchase.

"The first defense savings bond was sold on May 1, 1941. Then came Pearl Harbor and overnight

defense bonds became war bonds. Millions of Americans bought them to help speed victory. Peace came, or so we thought, in 1945. But turbulence and global tensions have not ceased.

"Now, more than ever, we need to keep America strong. Savings bonds are helping to build Amer-



ica's power for peace. And at the same time, they are helping millions of Americans reach individual and family goals for the good things in life.

"This year's campaign will be held at the various Company locations during the week beginning May 29. A member of your local bond committee will explain the program and its benefits to you."

The local campaign will be conducted under the same plan as in previous years at the Omaha Works.

Those presently participating in the bond program can increase their payroll deductions for the purchase of additional bonds if desired during the campaign.

Those who are not enrolled are urged to give the program careful consideration and help not only themselves but their country in its time of need by buying United States Savings Bonds.

Shareowners Have Light Moments At A. T. & T. Meeting



Shareowners were sometimes amused by the questions asked during the Annual Meeting. Earlier they had heard Mr. Kappel discuss communication satellites and the function of Western Electric in the Bell System.